

Omeprazole in Rat Plasma

Waters Corporation



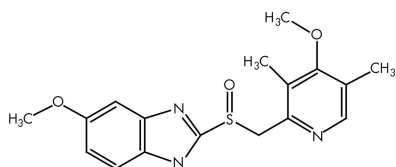
This is an Application Brief and does not contain a detailed Experimental section.

Abstract

This application brief highlights the analysis of omeprazole in rat plasma using Oasis MCX extraction method.

Introduction

Omeprazole in rat plasma is being analyzed in this application brief.



Omeprazole

Experimental

HPLC Method

Column:	XTerra MS C ₁₈ 2.1 x 30 mm, 3.5 μm (p/n: 186000398)
Mobile phase A:	1.0% NH ₄ OH
Mobile phase B:	ACN
Isocratic mobile phase composition:	50% A; 50% B
Flow rate:	0.2 mL/min
Injection volume:	20 μL
Detection:	MS ESI+
Instrument:	Alliance 2690, Quattro Ultima

Ion source:	ESI+
Source temp.:	150 °C
Gas cell:	1.5e ⁻³ mbar, 10 eV
Desolvation temp.:	350 °C
Cone gas flow:	150 L/hr
Drying gas flow:	600 L/hr
Cone voltage:	30 V

Oasis MCX Extraction Method

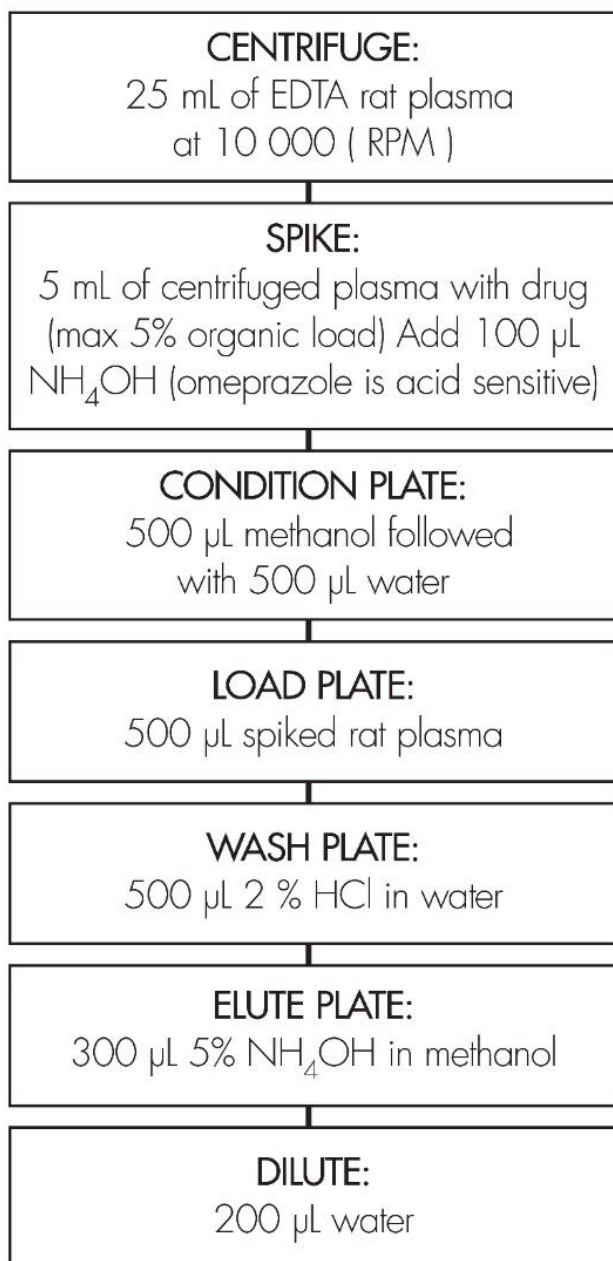
Oasis MCX Extraction Plate, 10 mg/96-well Part Number [186000259](#) <

<https://www.waters.com/nextgen/in/en/shop/sample-preparation--filtration/186000259-oasis-mcx-96-well-plate-10-mg-sorbent-per-well-30--m-1-pk.html>>

OASIS® MCX EXTRACTION METHOD

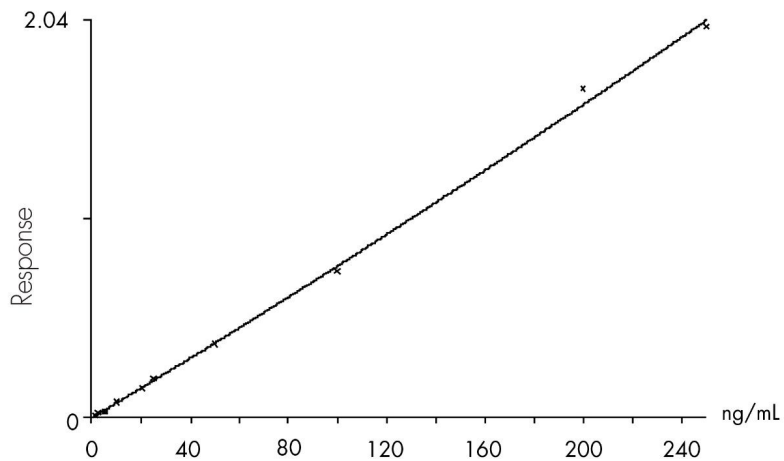
Oasis® MCX Extraction Plate, 10 mg/96-well

Part Number 186000259

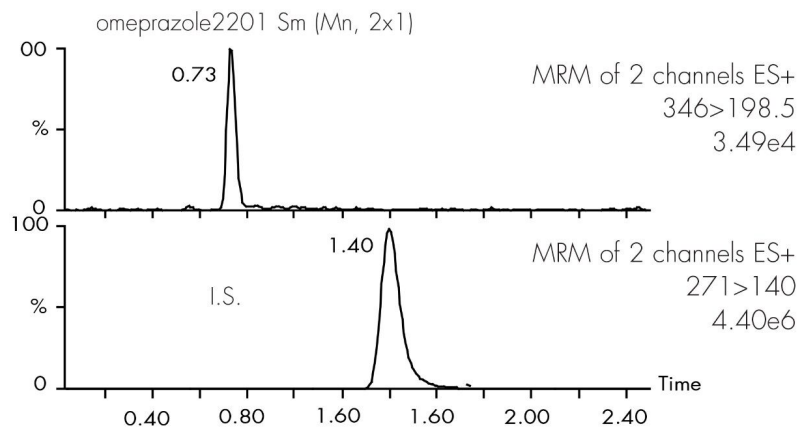


Results and Discussion

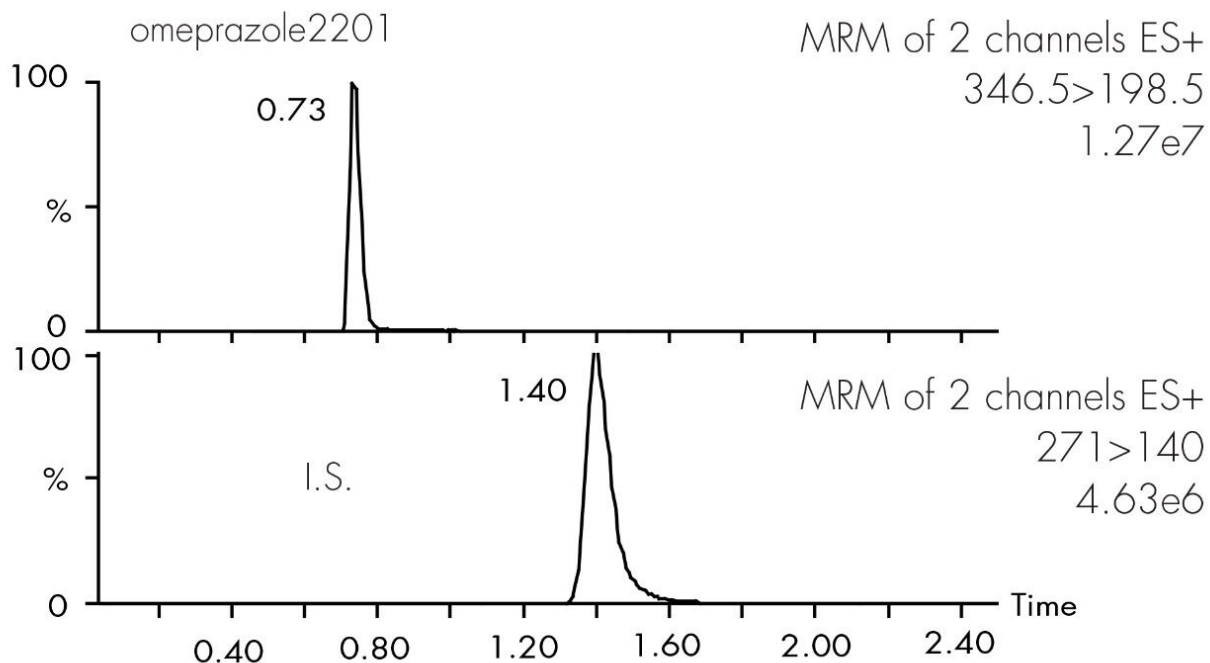
Compound name: Omeprazole
Coefficient of Determination: 0.000956920
Calibration curve: $2.49567 \times 10^{-6} x^2 + 0.00754050 x + 0.000956920$
Response type: Internal Std (Ref), Area* (IS Conc./IS Area)
Curve type: 2nd Order, Origin: Exclude, Weighting: $1/x^2$, Axis trans: None



Spike 1.0 ng plasma, 50/50 ACN/H₂O 1.0% NH₄OH



Spike 250 ng plasma, 50/50 ACN/H₂O 1.0% NH₄OH



Omeprazole (ng/mL)	Mean	Standard deviation	Coefficient of variation (%)	Recovery (%)
1	0.95	0.06	6.7	95
2.5	2.57	0.19	7.7	102
10	9.58	0.47	4.9	95
20	20.16	0.89	4.4	100
50	54.04	2.2	4.2	108
100	102.6	6.3	6.3	102
250	248.4	3.3	3.3	99

Featured Products

Alliance HPLC <<https://www.waters.com/514248>>

WA31764.111, June 2003

© 2021 Waters Corporation. All Rights Reserved.