

## Application Note

# Nonylphenol in Tap Water (Endocrine Disruptors)

---

Waters Corporation



This is an Application Brief and does not contain a detailed Experimental section.

---

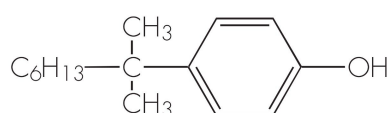
## Abstract

This application brief highlights the analysis of nonylphenol in tap water using Oasis SPE method.

---

## Introduction

Nonylphenol are studied in this application brief.



**NONYLPHENOL**

---

## Experimental

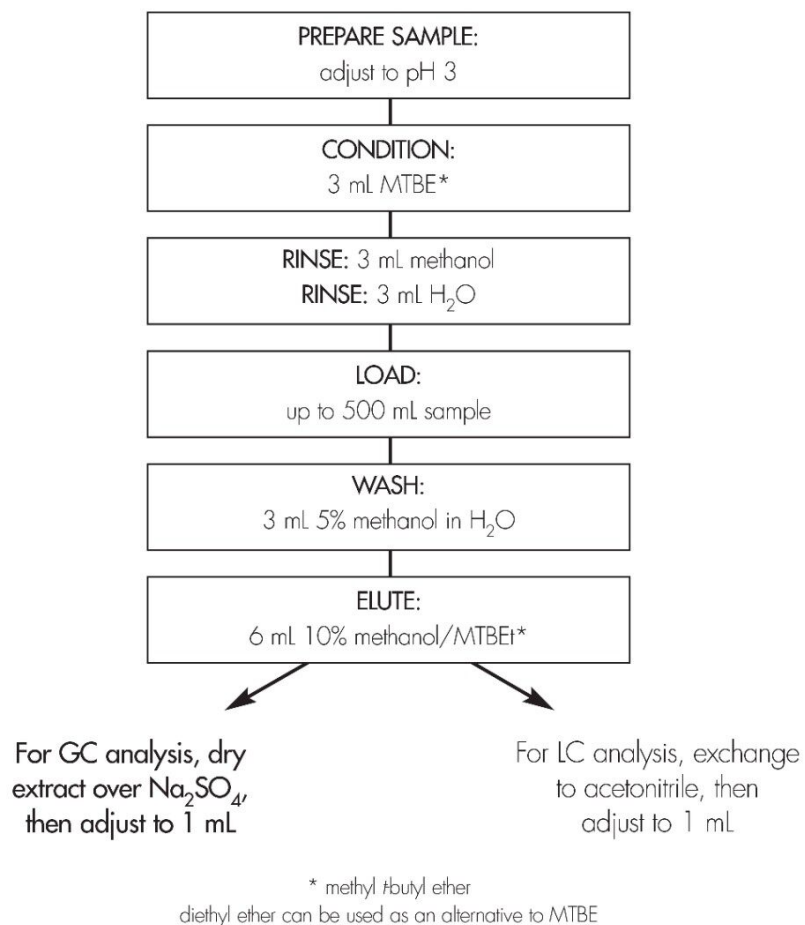
### GC Method

Column:	J&W DB-5 capillary, 30 meters, 0.25 mm ID, 0.25 $\mu$ m film thickness
Carrier gas:	Helium @ 30 cm/sec
Temp. program:	50 °C initial, 30 °C/min to 120 °C then 8°/min to 280°
Injection volume:	2 $\mu$ L
Detection:	NPD

## OASIS® SPE METHOD FOR ENDOCRINE DISRUPTORS

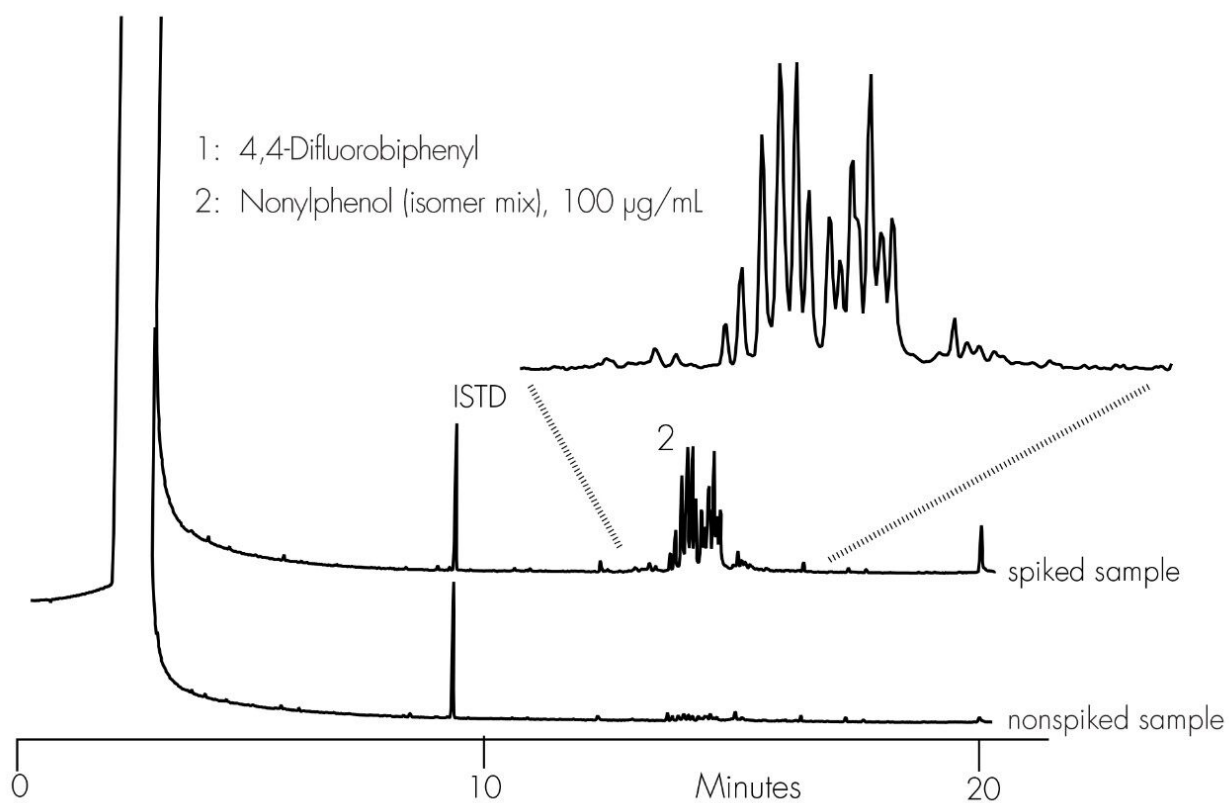
Conditions for Oasis® HLB Cartridge, 6 cc/200 mg

Part Number WAT106202



---

## Results and Discussion



Spike level = 100 µg/L

n = 5

Recovery = 84.3%

RSD = 9.0%

---

## Featured Products

WA61764.110, June 2003

