

## Maprotiline

---

Waters Corporation



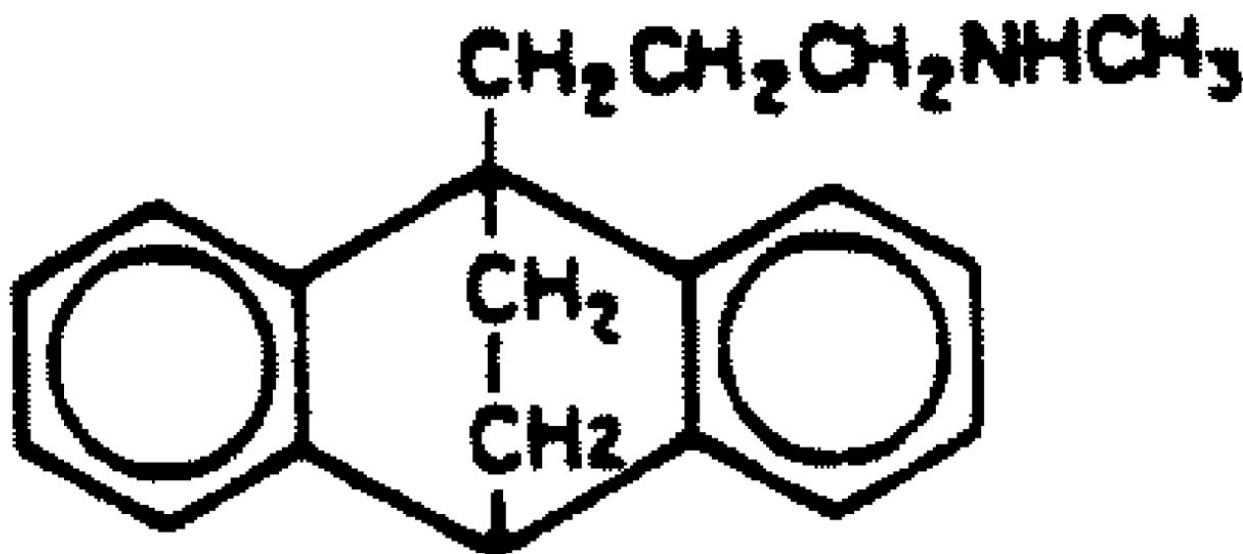
This is an Application Brief and does not contain a detailed Experimental section.

### Abstract

This application brief demonstrates the analysis of Maprotiline using Symmetry Columns.

## Introduction

The compound analyzed in this study is Maprotiline.



# 1. Maprotiline HCL

## Experimental

### HPLC Method

Column:

Symmetry C<sub>18</sub>, 3.9 x 150 mm, 5 μm

Part number:

WAT046980

Mobile phase:

50 mM potassium phosphate pH 3.0/acetonitrile

65:35

Flow rate:

1.0 mL/min

Injection volume:

5 µL of 100 µg/mL maprotiline hydrochloride

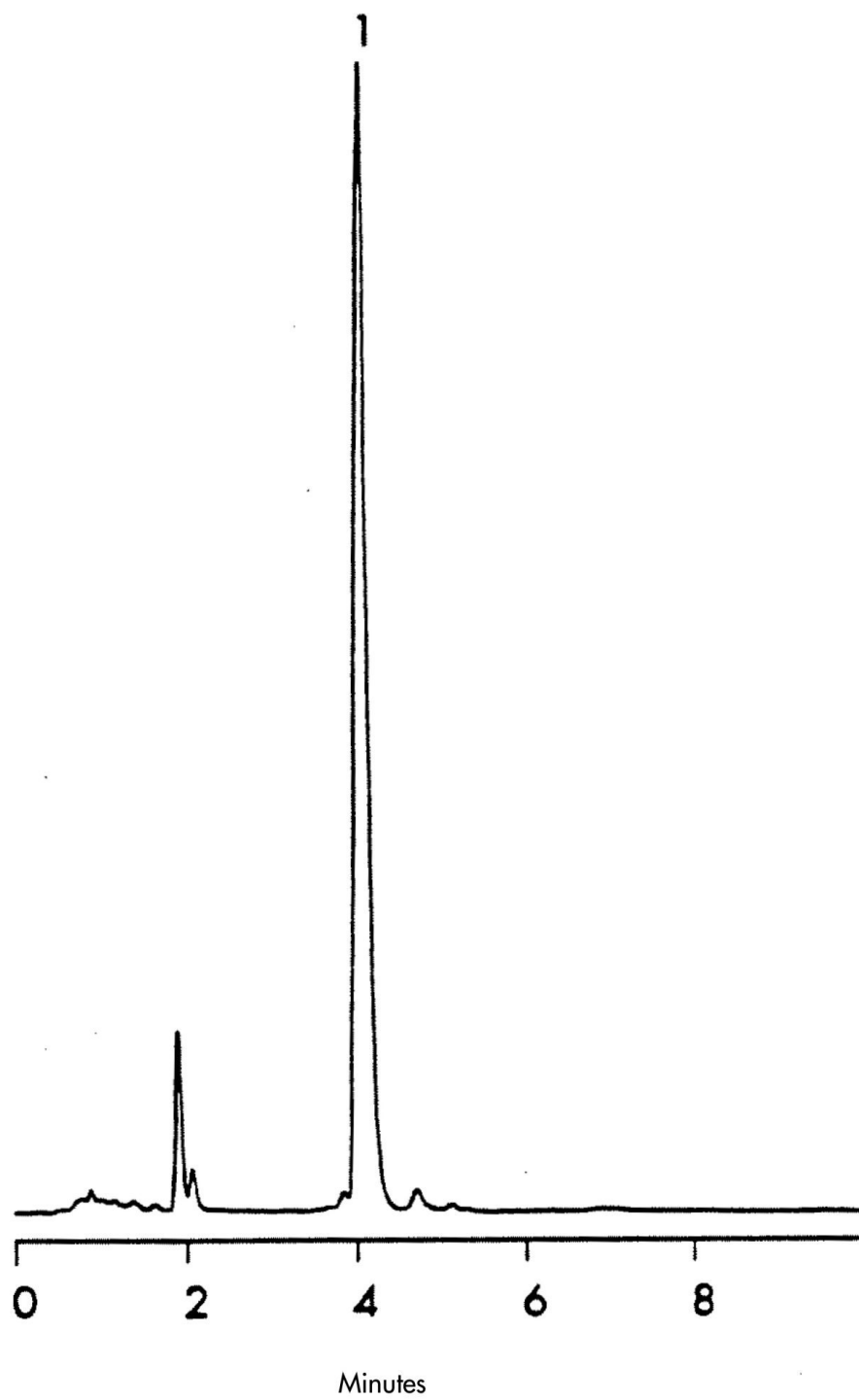
Detection:

UV @ 254 nm

## USP Tailing Factors

1. 1.4

## Results and Discussion



Featured Products

WA31763.97, June 2003



© 2021 Waters Corporation. All Rights Reserved.