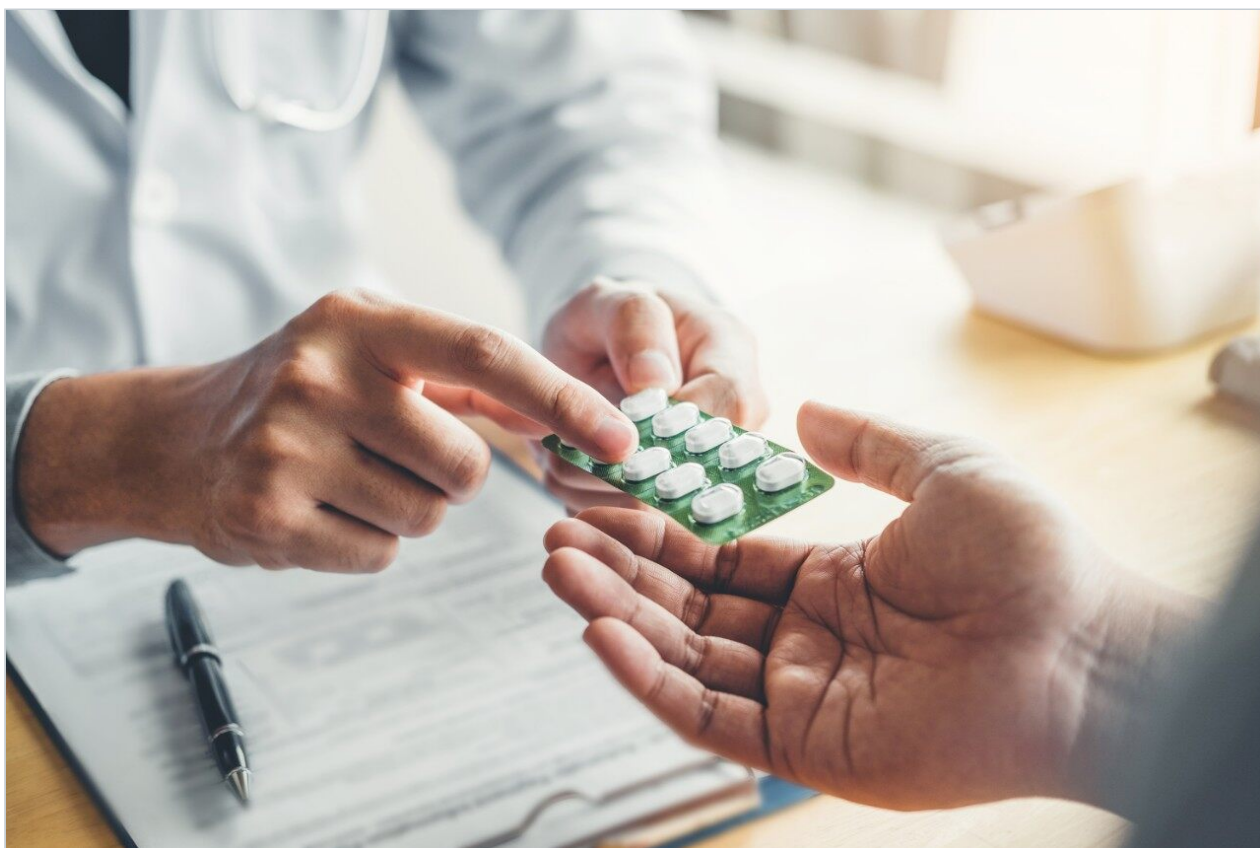


응용 자료

Maprotiline

Waters Corporation



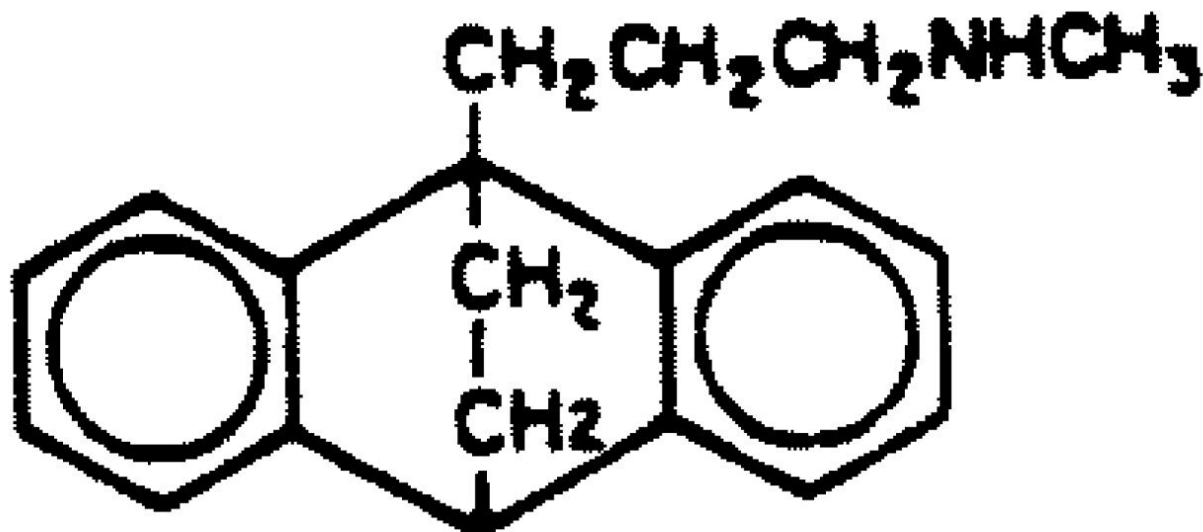
This is an Application Brief and does not contain a detailed Experimental section.

Abstract

This application brief demonstrates the analysis of Maprotiline using Symmetry Columns.

Introduction

The compound analyzed in this study is Maprotiline.



1. Maprotiline HCL

Experimental

HPLC Method

Column:	Symmetry C ₁₈ , 3.9 x 150 mm, 5 μm
Part number:	WAT046980
Mobile phase:	50 mM potassium phosphate pH 3.0/acetonitrile

65:35

Flow rate:

1.0 mL/min

Injection volume:

5 μ L of 100 μ g/mL maprotiline hydrochloride

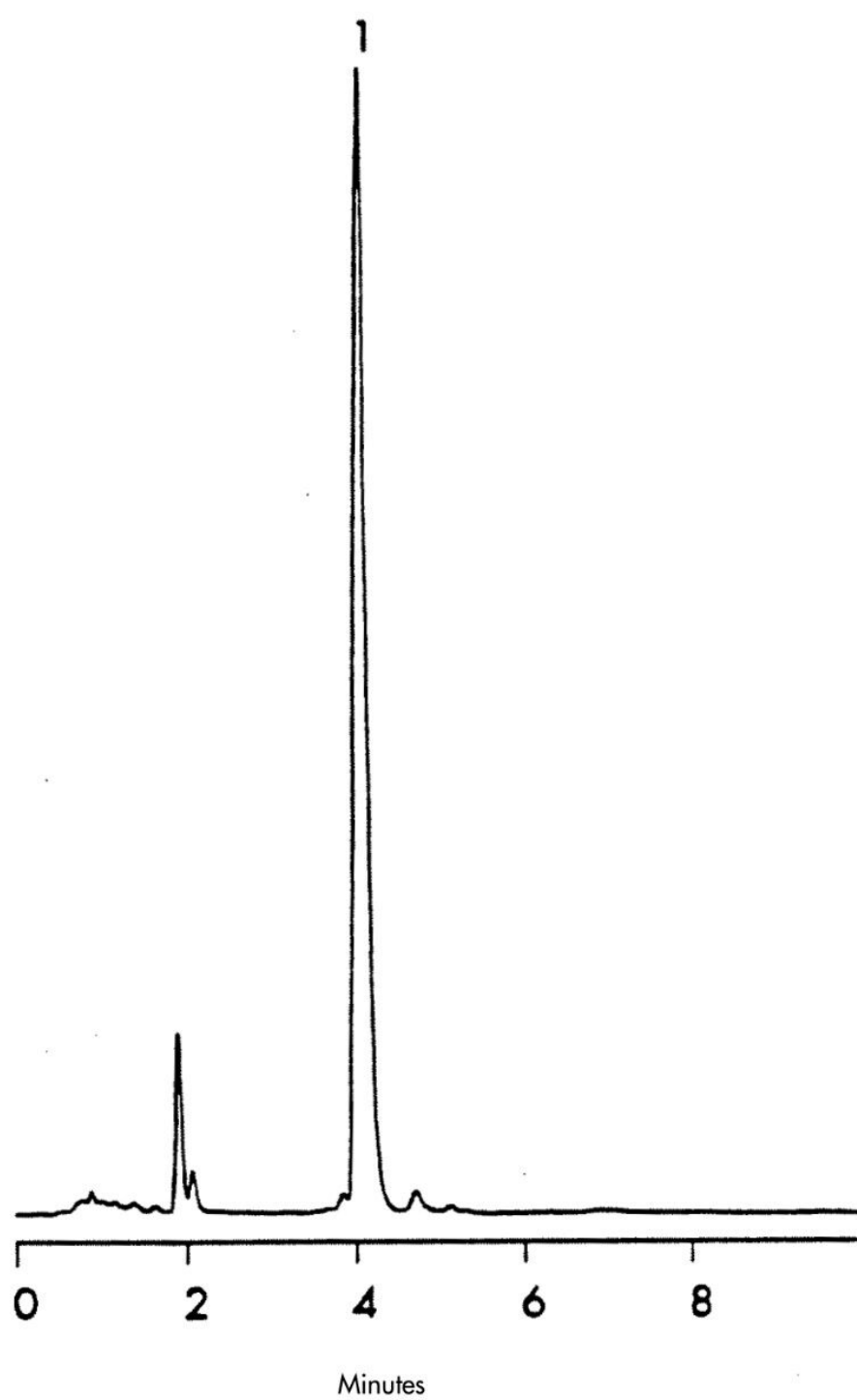
Detection:

UV @ 254 nm

USP Tailing Factors

1. 1.4

Results and Discussion



Featured Products

WA31763.97, June 2003

© 2021 Waters Corporation. All Rights Reserved.