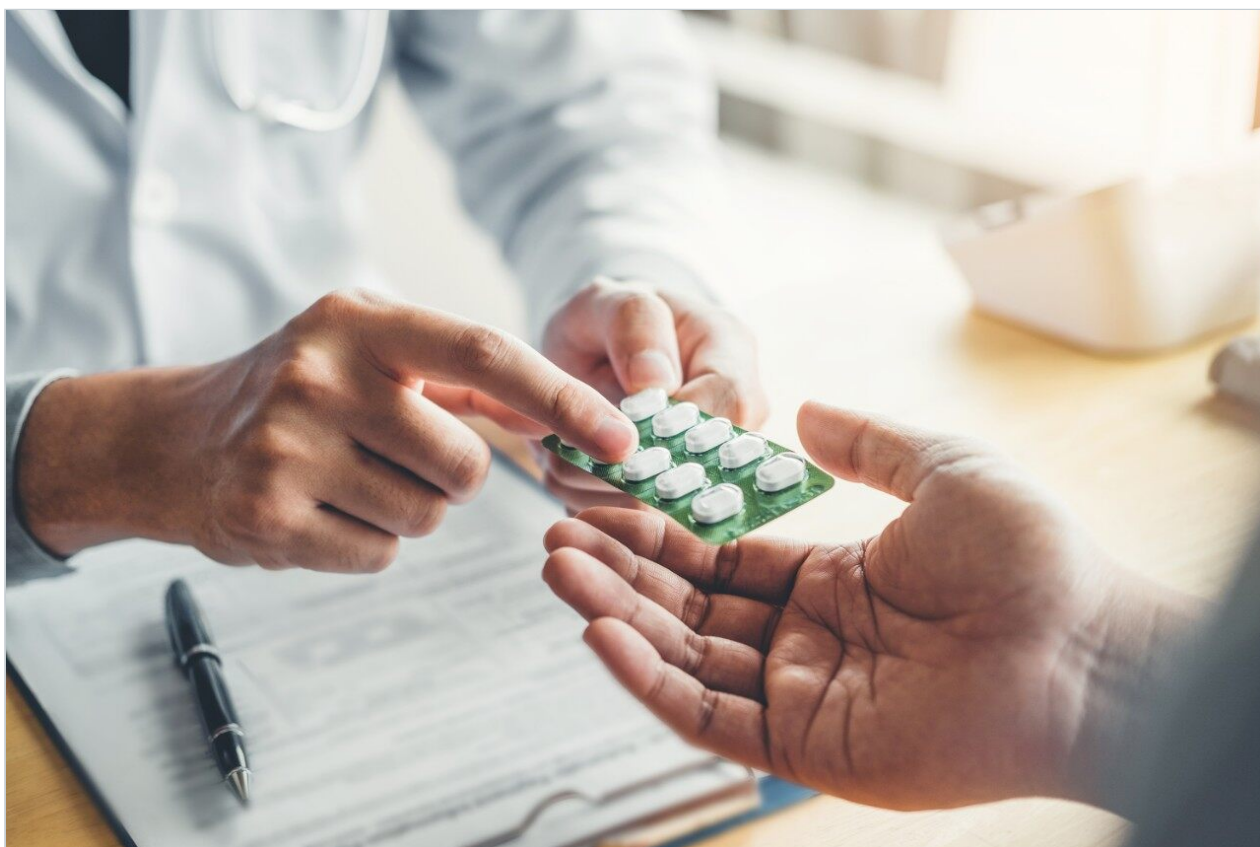


## Maprotiline

---

Waters Corporation



This is an Application Brief and does not contain a detailed Experimental section.

---

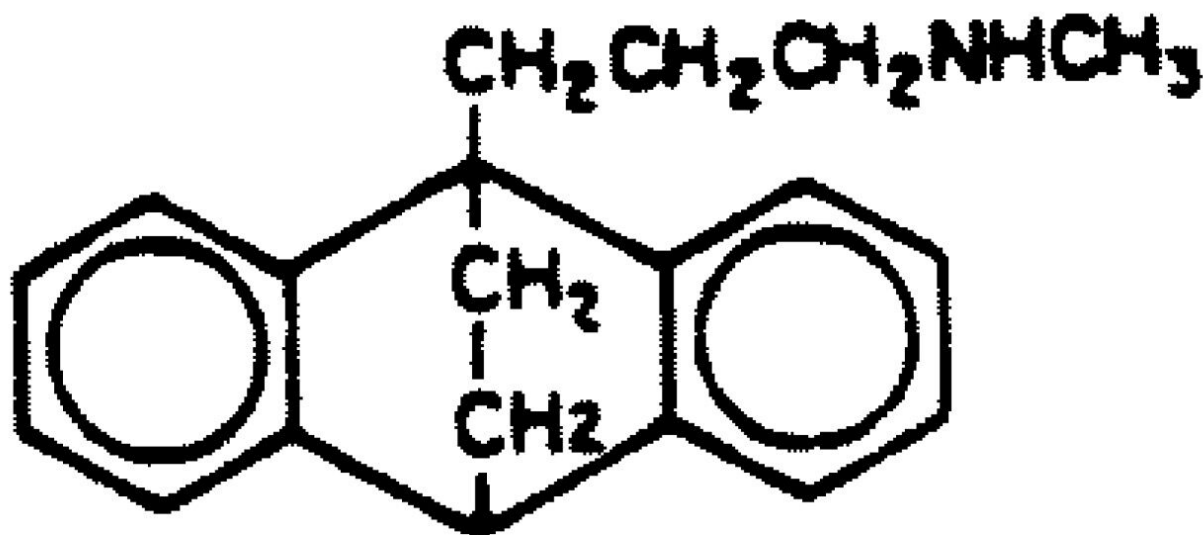
### Abstract

This application brief demonstrates the analysis of Maprotiline using Symmetry Columns.

---

## Introduction

The compound analyzed in this study is Maprotiline.



# 1. Maprotiline HCL

---

## Experimental

### HPLC Method

Column:	Symmetry C <sub>18</sub> , 3.9 x 150 mm, 5 µm
Part number:	WAT046980
Mobile phase:	50 mM potassium phosphate pH 3.0/acetonitrile 65:35

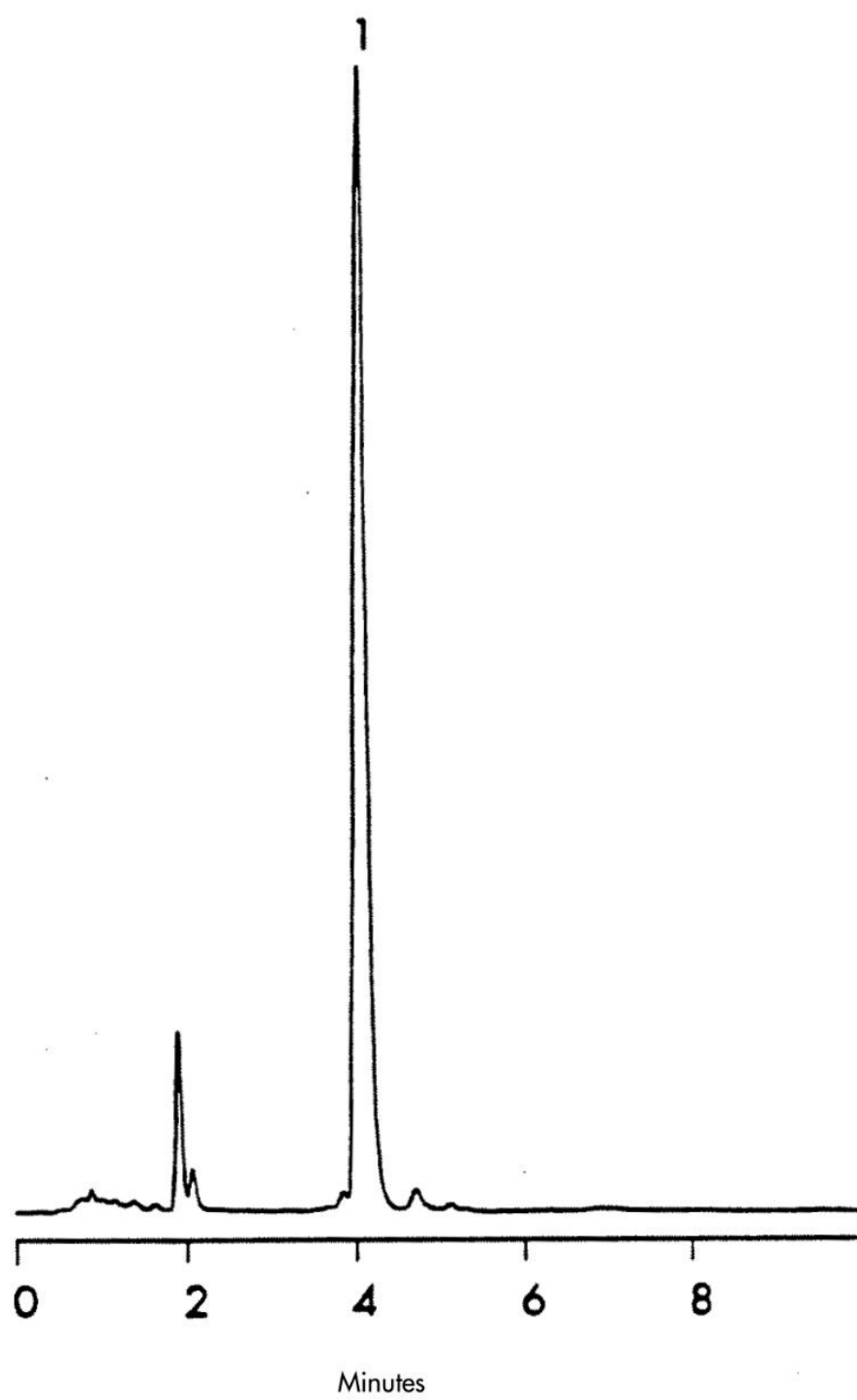
Flow rate:	1.0 mL/min
Injection volume:	5 µL of 100 µg/mL maprotiline hydrochloride
Detection:	UV @ 254 nm

## USP Tailing Factors

1. 1.4

---

## Results and Discussion



---

Featured Products

WA31763.97, June 2003

© 2021 Waters Corporation. All Rights Reserved.