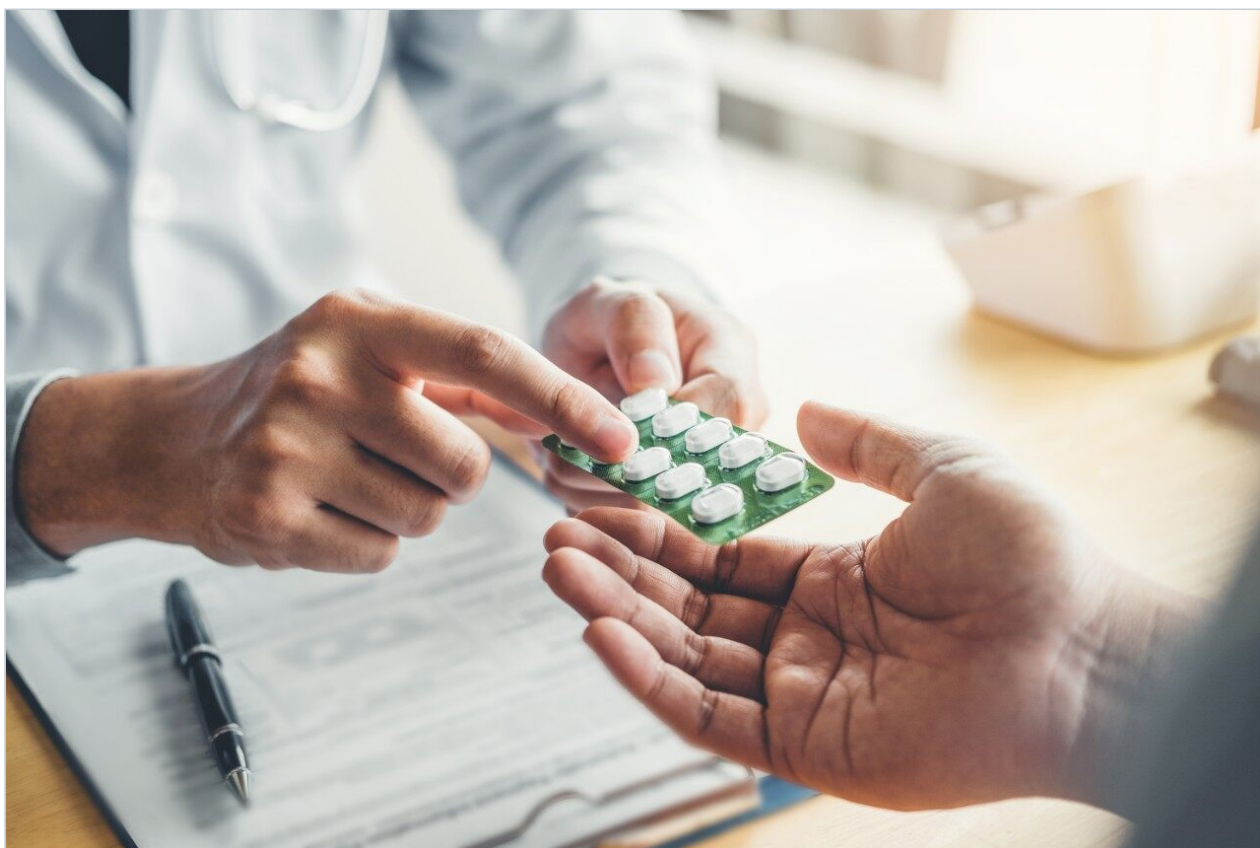


Maprotiline

Waters Corporation



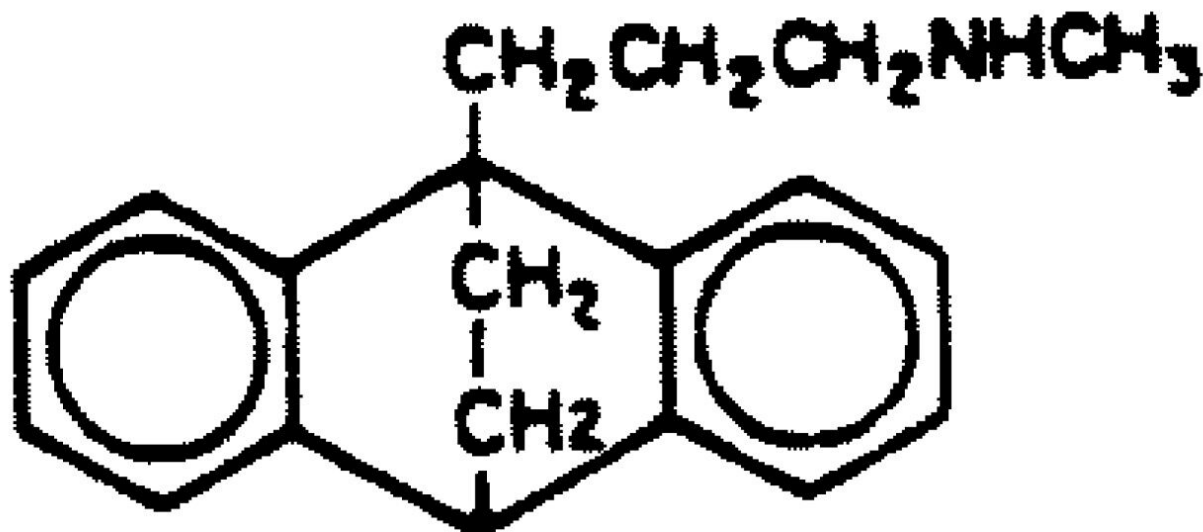
This is an Application Brief and does not contain a detailed Experimental section.

Abstract

This application brief demonstrates the analysis of Maprotiline using Symmetry Columns.

Introduction

The compound analyzed in this study is Maprotiline.



1. Maprotiline HCL

Experimental

HPLC Method

| | |
|---------------|---|
| Column: | Symmetry C ₁₈ , 3.9 x 150 mm, 5 µm |
| Part number: | WAT046980 |
| Mobile phase: | 50 mM potassium phosphate pH 3.0/acetonitrile |

65:35

Flow rate:

1.0 mL/min

Injection volume:

5 μ L of 100 μ g/mL maprotiline hydrochloride

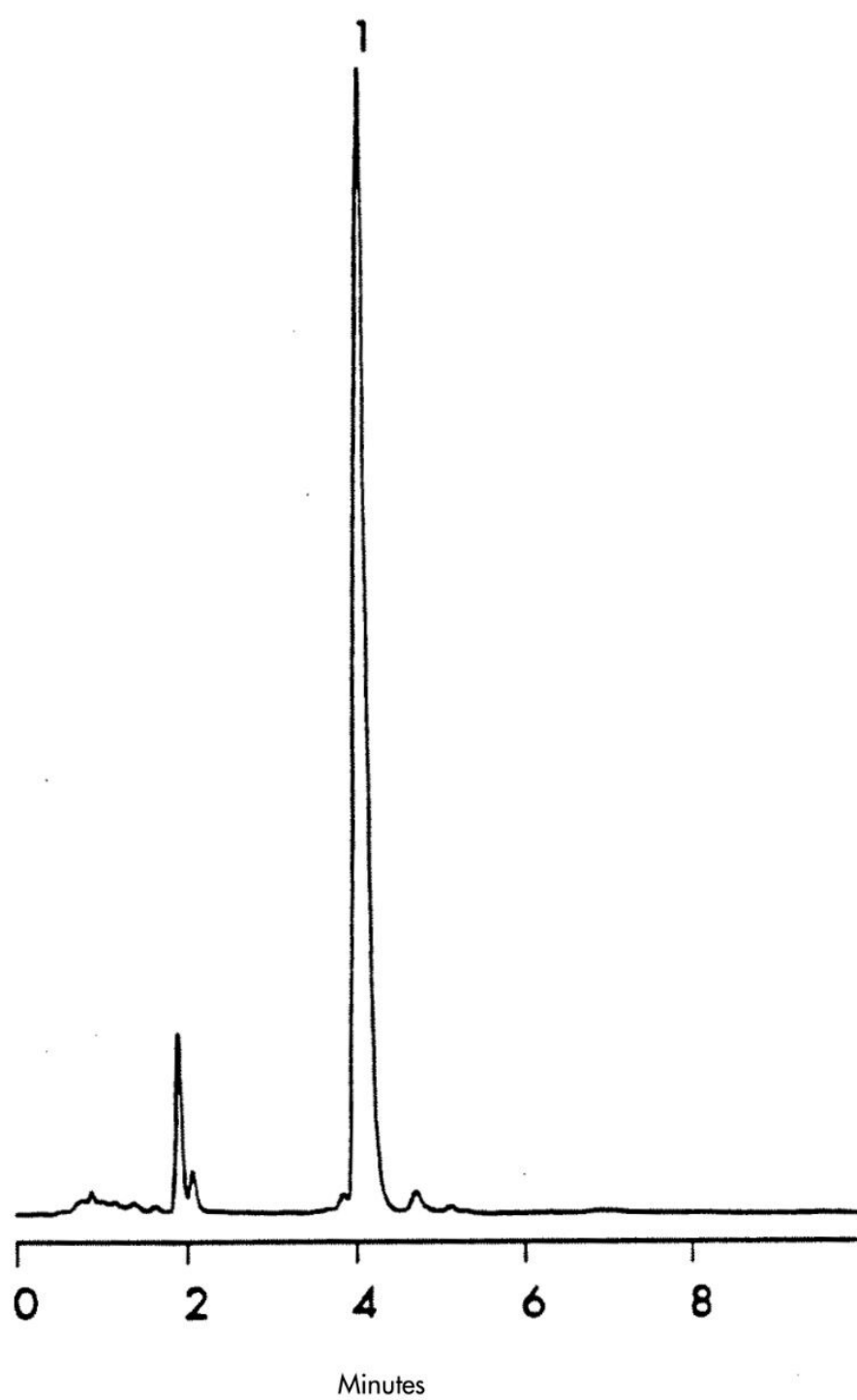
Detection:

UV @ 254 nm

USP Tailing Factors

1. 1.4

Results and Discussion



Featured Products

WA31763.97, June 2003

© 2021 Waters Corporation. All Rights Reserved.