

## Application Note

# Lifetime of Symmetry 3.5 $\mu$ m Column: 10,000 Injections of Sulfa Drugs

---

Waters Corporation

This is an Application Brief and does not contain a detailed Experimental section.

---

## Abstract

This application brief demonstrates the analysis of sulfa drugs.

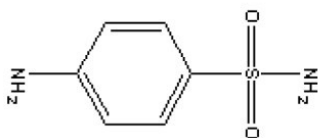
---

## Introduction

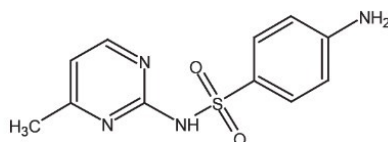
The compounds analyzed in this study are:

1. Sulfanilamide
  2. Sulfadiazine
  3. Sulfathiazole
  4. Sulfamerazine
  5. Sulfamethazine
-

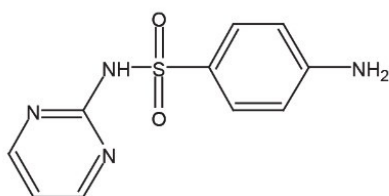
6. Succinylsulfathiazole



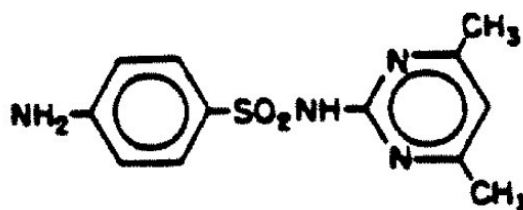
**1. Sulfanilamide**



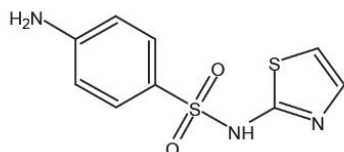
**4. Sulfamerazine**



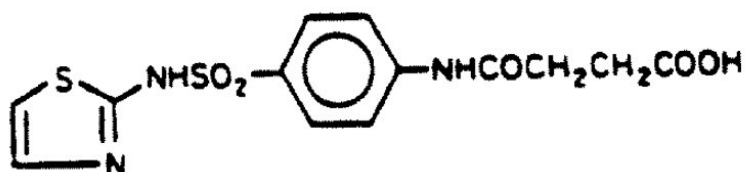
**2. Sulfadiazine**



**5. Sulfamethazine**



**3. Sulfathiazole**



**6. Succinylsulfathiazole**

---

## Experimental

### HPLC Method

Column:

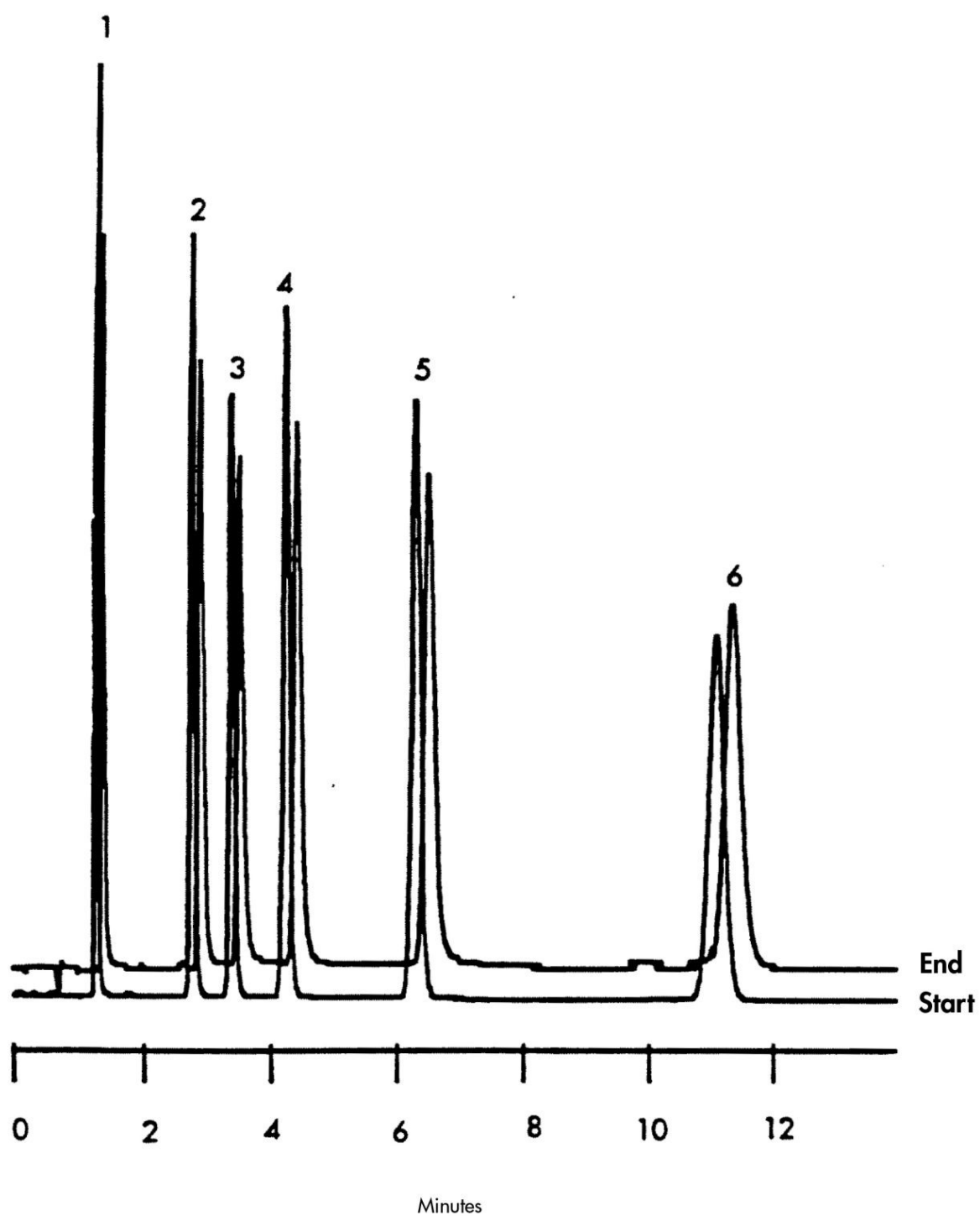
Symmetry 3.5µm C<sub>18</sub>, 4.6 x 100 mm

---

Guard Column:	Symmetry Guard column, 3.9 x 20 mm, 5 $\mu$ m
Part numbers:	Column - WAT066220, Guard - WAT054225
Mobile phase:	Water/methanol/glacial acetic acid 79:20:1
Flow rate:	1.5 mL/min
Injection volume:	10 $\mu$ L of mixture of six sulfa drugs at 10 to 39 $\mu$ g/mL
Detection:	UV @ 254 nm

---

## Results and Discussion



---

## Featured Products

WA31763.96, June 2003

© 2022 Waters Corporation. All Rights Reserved.