

Lifetime of Symmetry 3.5 μm Column: 10,000 Injections of Sulfa Drugs

Waters Corporation

This is an Application Brief and does not contain a detailed Experimental section.

Abstract

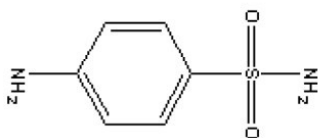
This application brief demonstrates the analysis of sulfa drugs.

Introduction

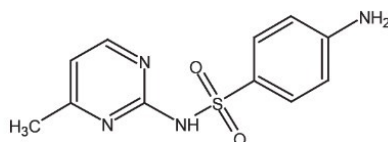
The compounds analyzed in this study are:

1. Sulfanilamide
 2. Sulfadiazine
 3. Sulfathiazole
 4. Sulfamerazine
 5. Sulfamethazine
-

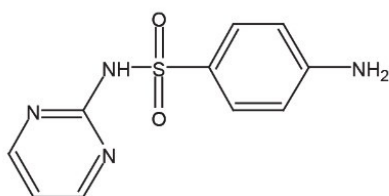
6. Succinylsulfathiazole



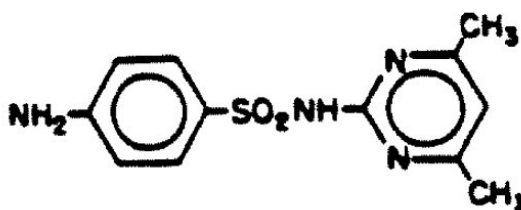
1. Sulfanilamide



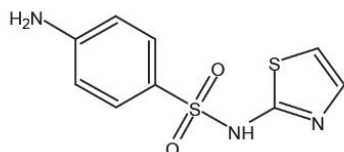
4. Sulfamerazine



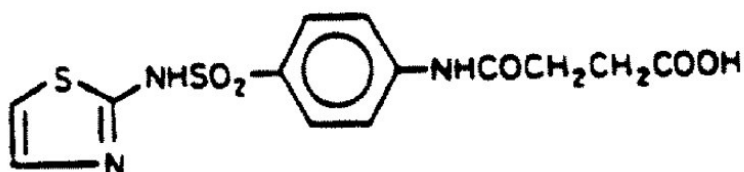
2. Sulfadiazine



5. Sulfamethazine



3. Sulfathiazole



6. Succinylsulfathiazole

Experimental

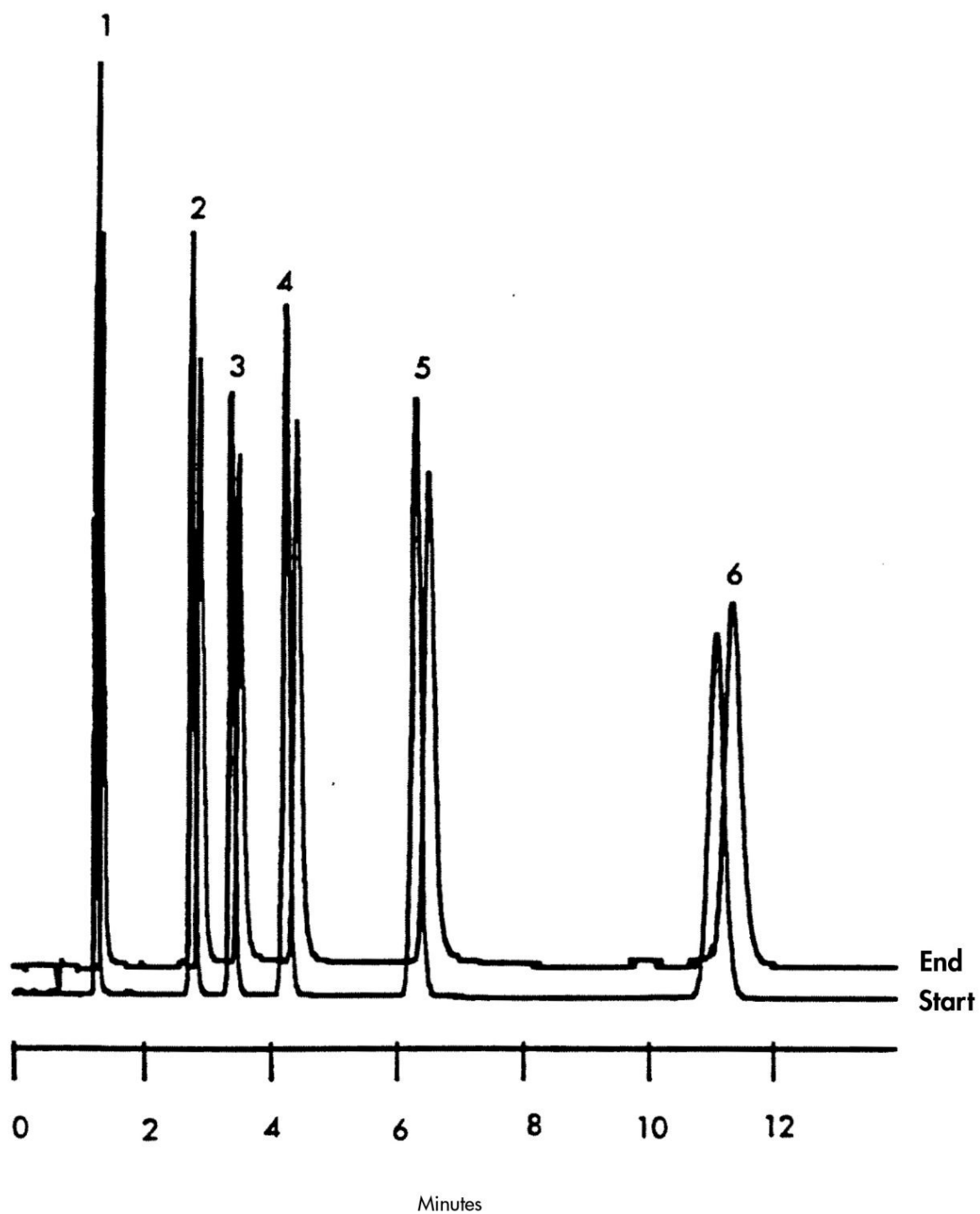
HPLC Method

Column:

Symmetry 3.5 μ m C₁₈, 4.6 x 100 mm

Guard Column:	Symmetry Guard column, 3.9 x 20 mm, 5 μ m
Part numbers:	Column - WAT066220, Guard - WAT054225
Mobile phase:	Water/methanol/glacial acetic acid 79:20:1
Flow rate:	1.5 mL/min
Injection volume:	10 μ L of mixture of six sulfa drugs at 10 to 39 μ g/mL
Detection:	UV @ 254 nm

Results and Discussion



Featured Products

WA31763.96, June 2003

© 2022 Waters Corporation. All Rights Reserved.