

Ibuprofen and Naproxen in Serum

Waters Corporation



This is an Application Brief and does not contain a detailed Experimental section.

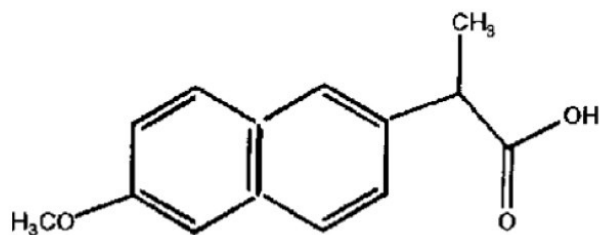
Abstract

This application brief demonstrates analysis of ibuprofen and naproxen in serum.

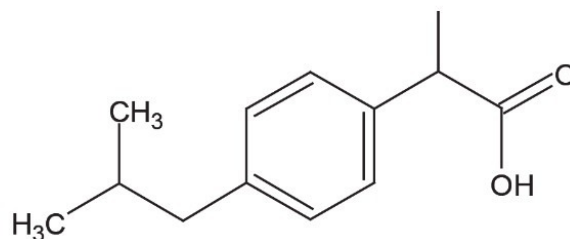
Introduction

The compounds used in this study are –

1. Naproxen
2. Ibuprofen



1. Naproxen



2. Ibuprofen

Experimental

HPLC Method

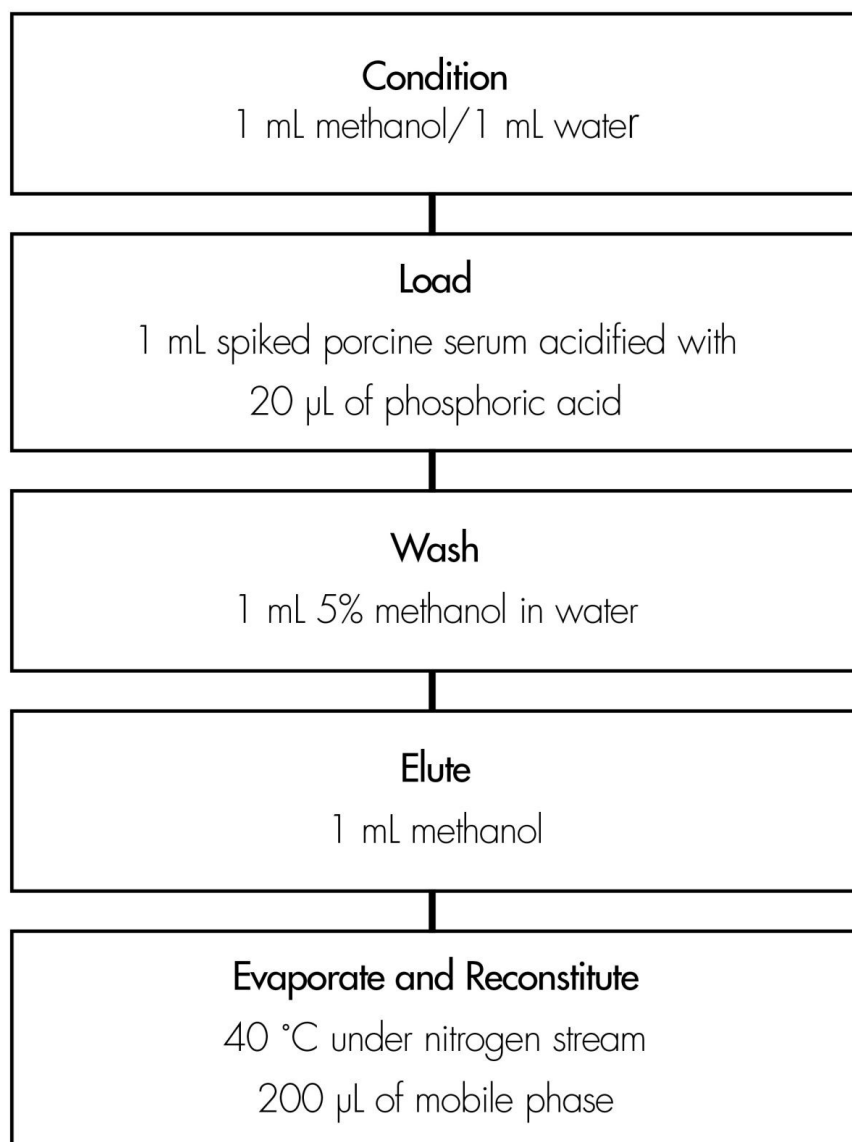
Column:	Symmetry Shield RP ₈ , 3.0 x 150 mm, 5 µm
Guard column:	Sentry Guard Column, 3.9 x 20 mm, 5 µm
Part numbers:	Column - WAT094243, Guard - WAT200675
Mobile phase:	1.2% glacial acetic acid in water, Acetonitrile 50:50
Flow rate:	0.6 mL/min

Injection:	20 μ L of reconstituted porcine serum extract
Temperature:	25 $^{\circ}$ C
Detection:	UV @ 254 nm

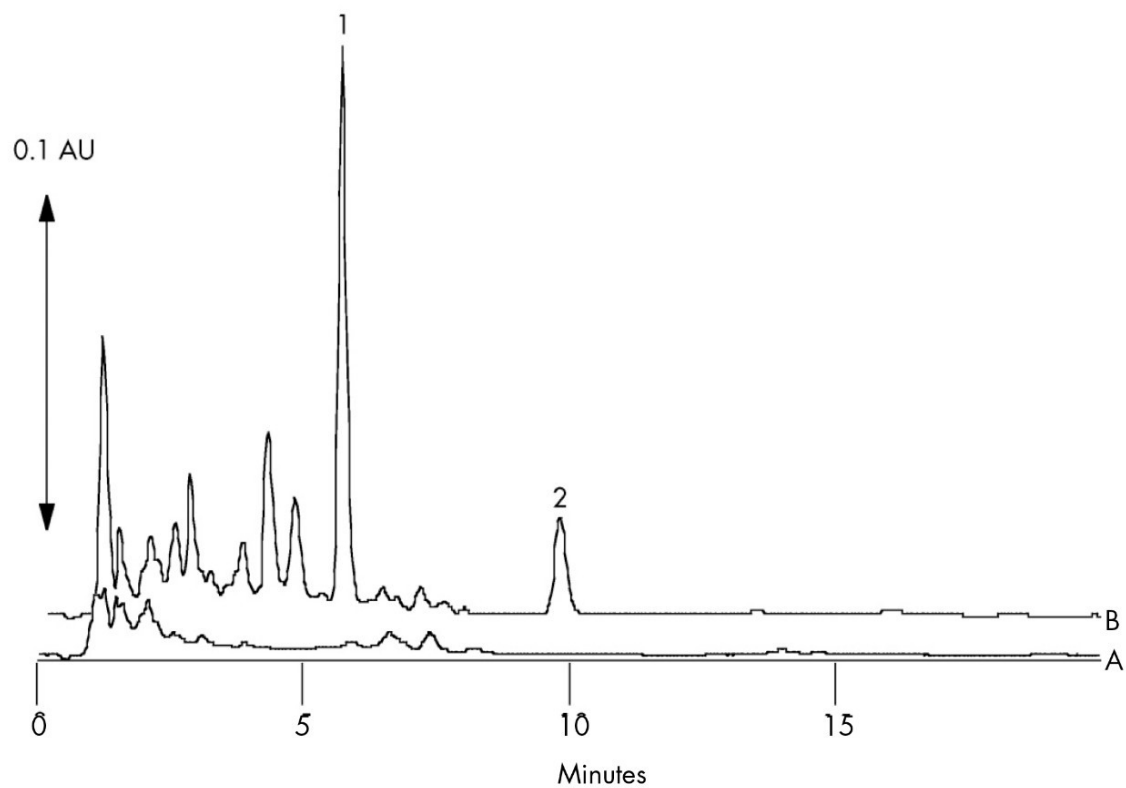
Oasis® HLB Extraction Method

Oasis® HLB 1 cc/30 mg Extraction Cartridge

Part Number WAT094425



Results and Discussion



Featured Products

WA31763.90, June 2003



© 2021 Waters Corporation. All Rights Reserved.