

## Ibuprofen and Naproxen in Serum

---

Waters Corporation



This is an Application Brief and does not contain a detailed Experimental section.

---

### Abstract

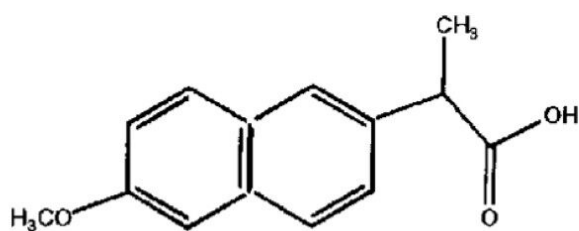
This application brief demonstrates analysis of ibuprofen and naproxen in serum.

---

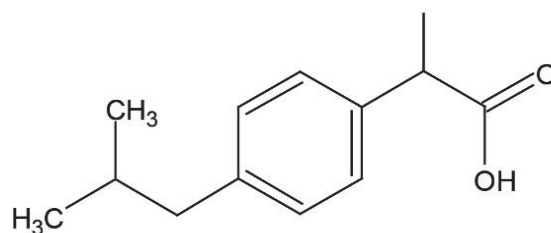
## Introduction

The compounds used in this study are –

1. Naproxen
2. Ibuprofen



**1. Naproxen**



**2. Ibuprofen**

---

## Experimental

### HPLC Method

Column:	Symmetry Shield RP <sub>8</sub> , 3.0 x 150 mm, 5 µm
Guard column:	Sentry Guard Column, 3.9 x 20 mm, 5 µm
Part numbers:	Column - WAT094243, Guard - WAT200675
Mobile phase:	1.2% glacial acetic acid in water, Acetonitrile 50:50
Flow rate:	0.6 mL/min
Injection:	20 µL of reconstituted porcine serum extract

Temperature:

25 °C

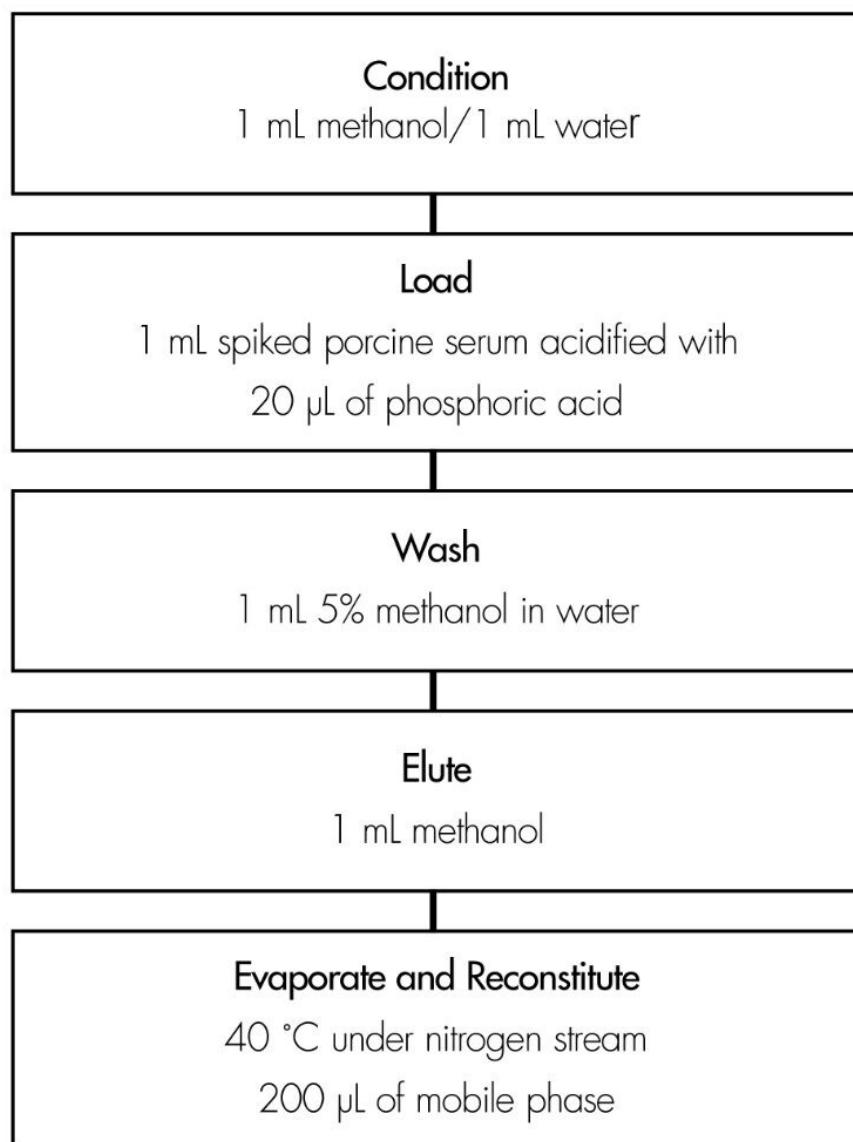
Detection:

UV @ 254 nm

## **Oasis® HLB Extraction Method**

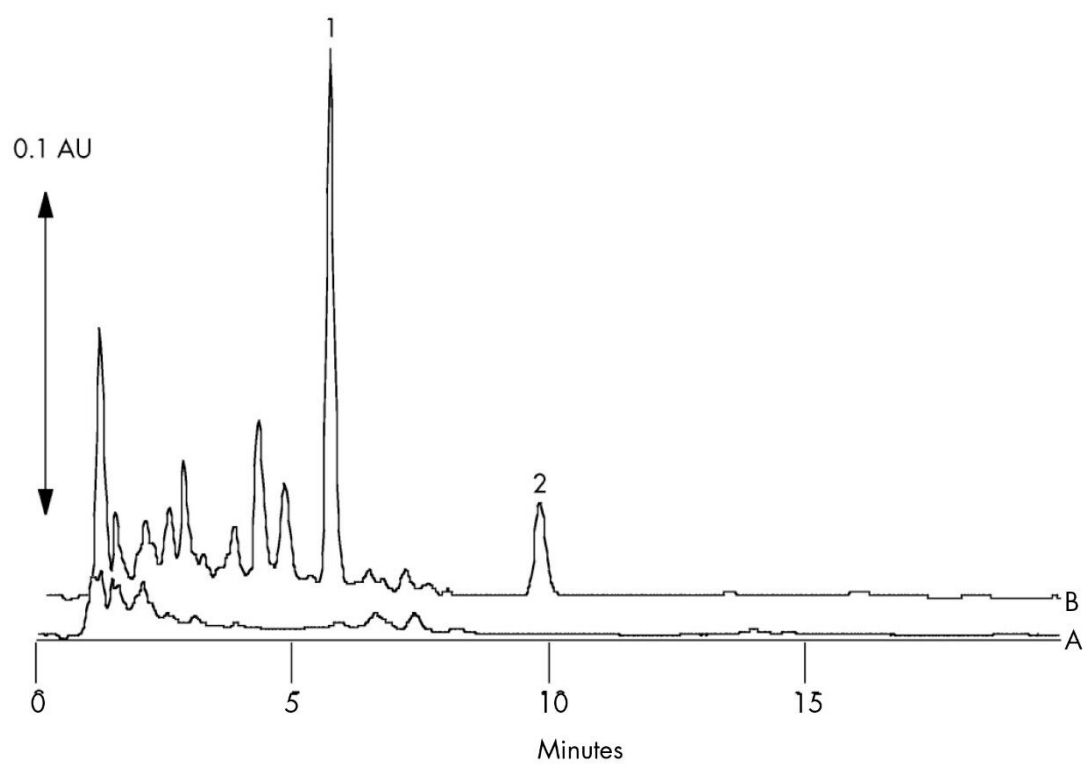
Oasis® HLB 1 cc/30 mg Extraction Cartridge

Part Number WAT094425



---

## Results and Discussion



---

## Featured Products

WA31763.90, June 2003