

Note d'application

Doxepin in Serum

Waters Corporation

This is an Application Brief and does not contain a detailed Experimental section.

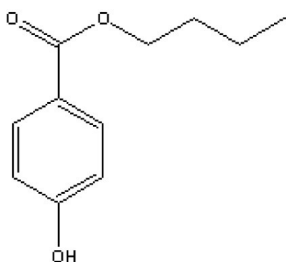
Abstract

This application brief demonstrates the analysis of doxepin in serum using Symmetry Columns.

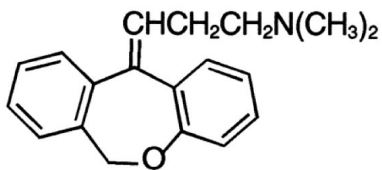
Introduction

The compounds analyzed in this study are:

1. Butyl paraben (I.S.)
2. Doxepin



1. Butyl paraben



2. Doxepin

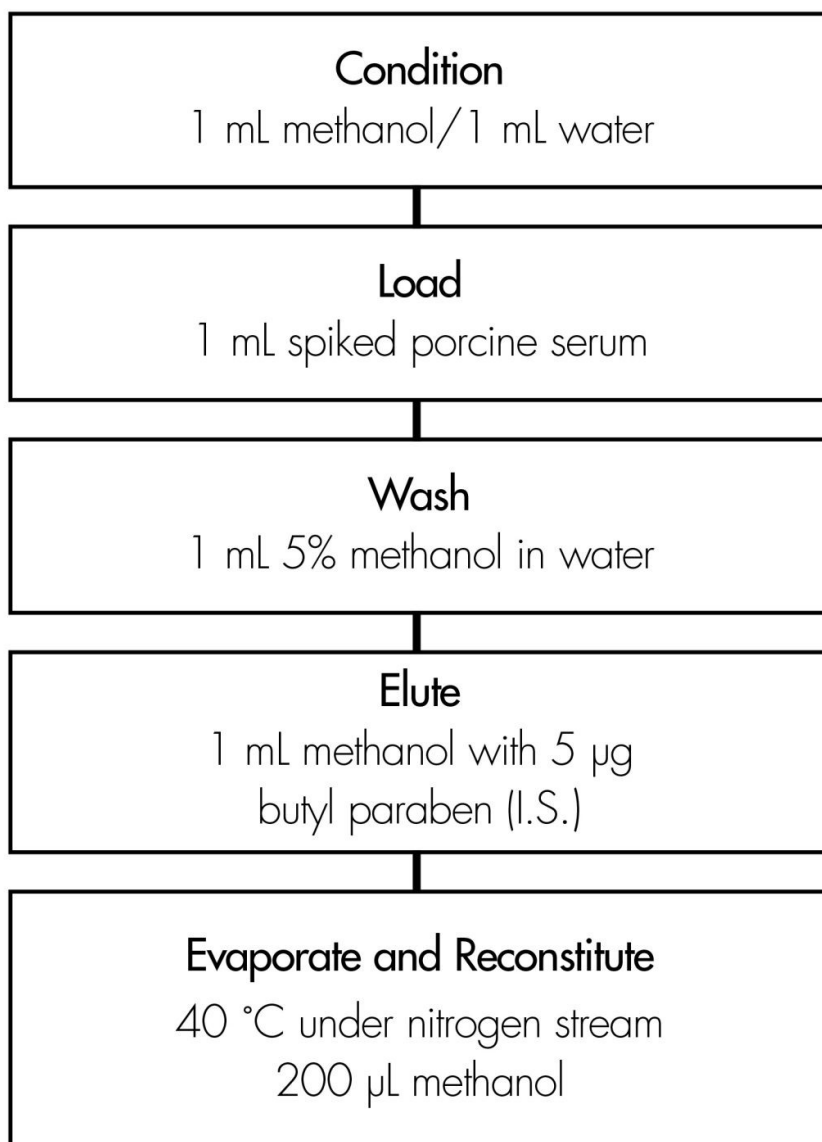
Experimental

HPLC Method

Column:	Symmetry Shield RP ₈ , 3.9 x 150 mm, 5 µm
Guard Column:	Symmetry Guard Column, 3.9 x 20 mm, 5 µm
Part numbers:	Column - WAT200655, Guard - WAT200675
Mobile phase:	20 mM potassium phosphate, pH 7/methanol 38:62
Flow rate:	1.0 mL/min
Injection volume:	20 µL of reconstituted porcine serum extract
Temperature:	30 °C
Detection:	UV @ 254 nm

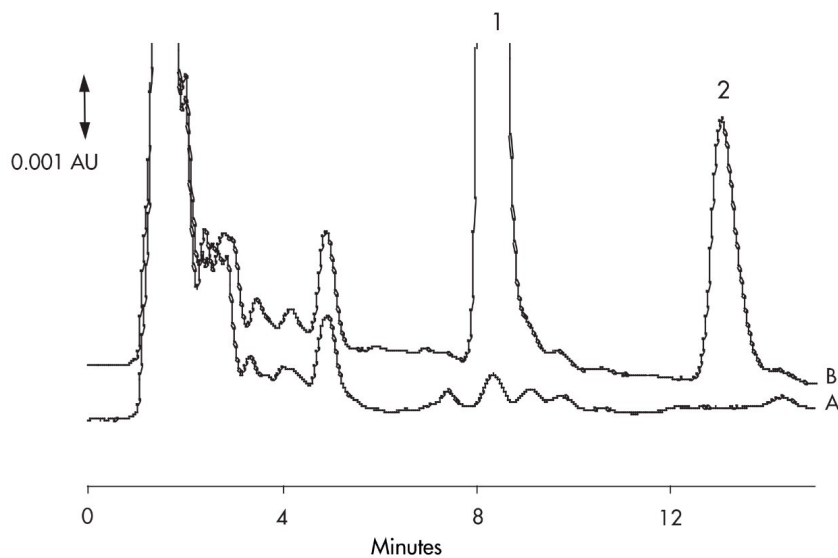
Oasis® HLB Extraction Method

Oasis® HLB 1 cc/30 mg Extraction Cartridge
Part Number WAT094225



Results and Discussion

Compound	Concentration $\mu\text{g/mL}$	% Recovery	%RSD (n=6)
Doxepin	0.200	95.8%	1.4%
	4.00	96.6%	1.9%



Featured Products

WA31763.79, June 2003

© 2022 Waters Corporation. All Rights Reserved.