

Dextromethorphan in a Cough Syrup

Waters Corporation

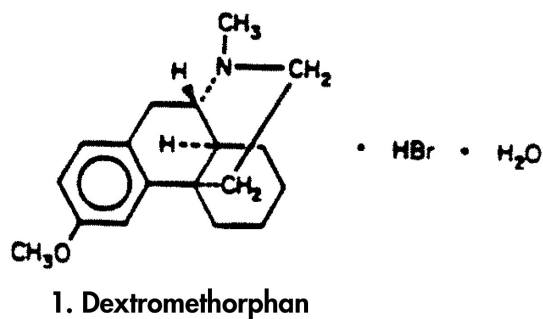
This is an Application Brief and does not contain a detailed Experimental section.

Abstract

This application brief demonstrates the analysis of dextromethorphan using Symmetry Columns.

Introduction

The compound analyzed in this study is dextromethorphan.



Experimental

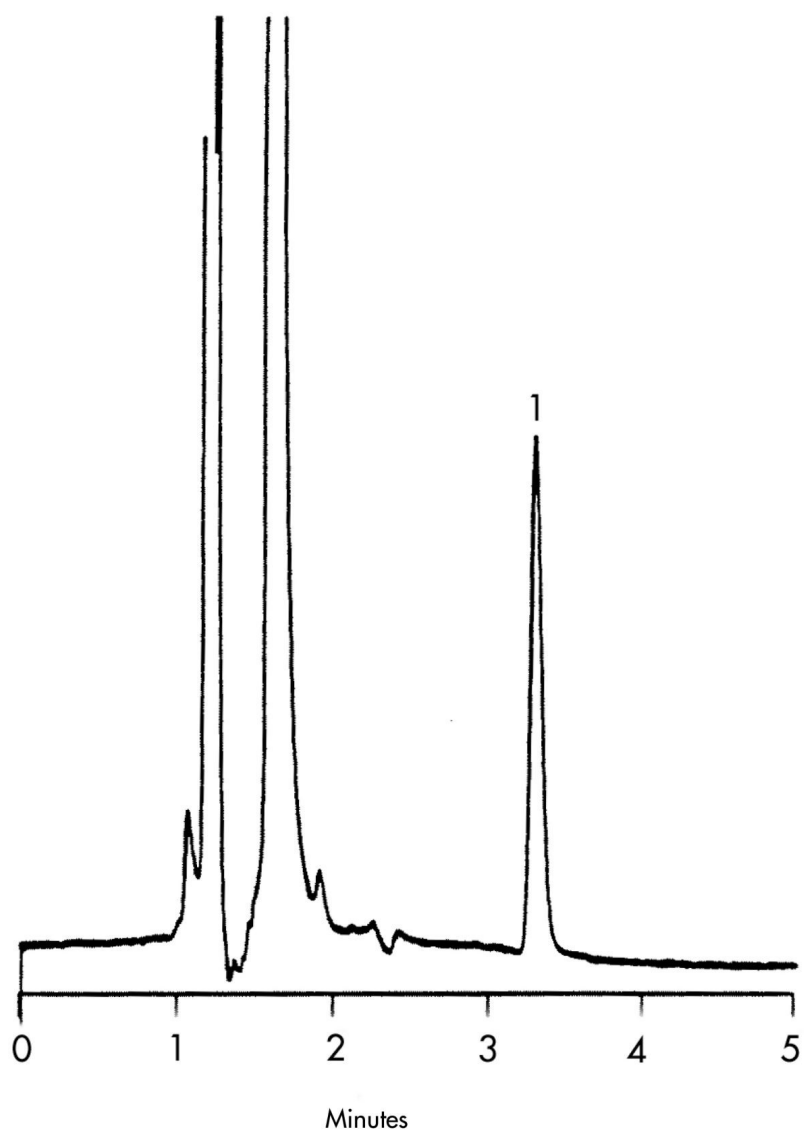
HPLC Method

Column:	Symmetry C ₈ , 3.9 x 150 mm, 5 µm
Guard column:	Symmetry Guard Column 3.9 x 20 mm, 5 µm
Part numbers:	Column - WAT046970, Guard - WAT054250
Mobile phase:	23 mM ammonium nitrate, pH 3.4/acetonitrile 30:70
Flow rate:	1.0 mL/min
Injection volume:	20 µL of 100 µg/mL sample
Detection:	UV @ 254 nm

USP Tailing Factors

1. 0.95

Results and Discussion



Featured Products

WA31763.71, June 2003

© 2022 Waters Corporation. All Rights Reserved.