

## Cytochrome c Tryptic Digest - Pore Size Effects

---

Waters Corporation

This is an Application Brief and does not contain a detailed Experimental section.

---

### Abstract

This application brief details on cytochrome c tryptic digest pore size effects using Symmetry Columns.

---

### Introduction

The compound used in this study is cytochrome c tryptic digest.

---

### Experimental

#### HPLC Method

Column: Symmetry C<sub>18</sub>, 4.6 x 150 mm, 5 µm, 100Å

---

Guard column:	Symmetry 300 C <sub>18</sub> , 4.6 x 150 mm, 5 µm, 300Å
Part numbers:	Column - WAT045905, Guard - WAT106157
Mobile phase A:	0.1% TFA in Water
Mobile phase B:	0.1% TFA in Acetonitrile
Flow rate:	0.75 mL/min
Injection volume:	20 µL
Temperature:	35 °C
Detection:	UV @ 214 nm

## Gradient

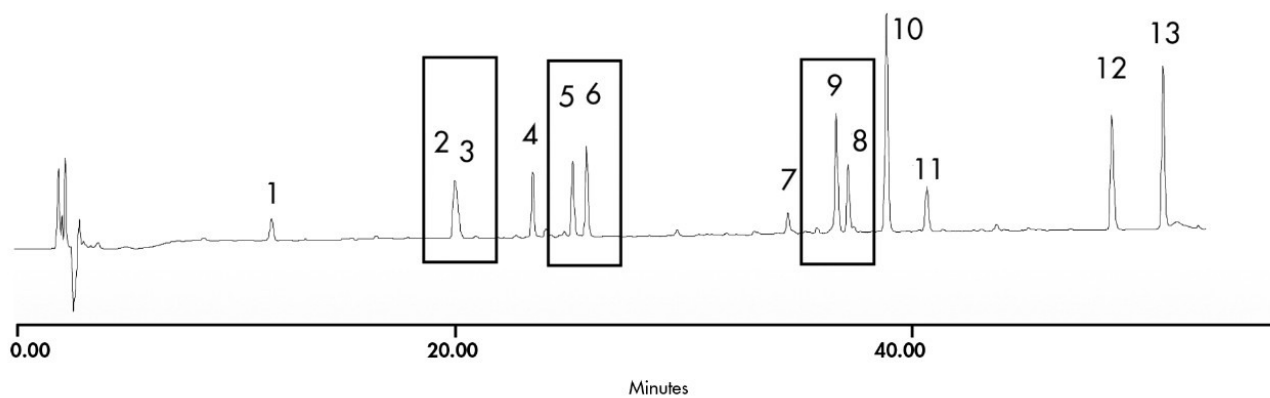
Time (min)	Profile	
	%A	%B
0	100	0
50	70	30

---

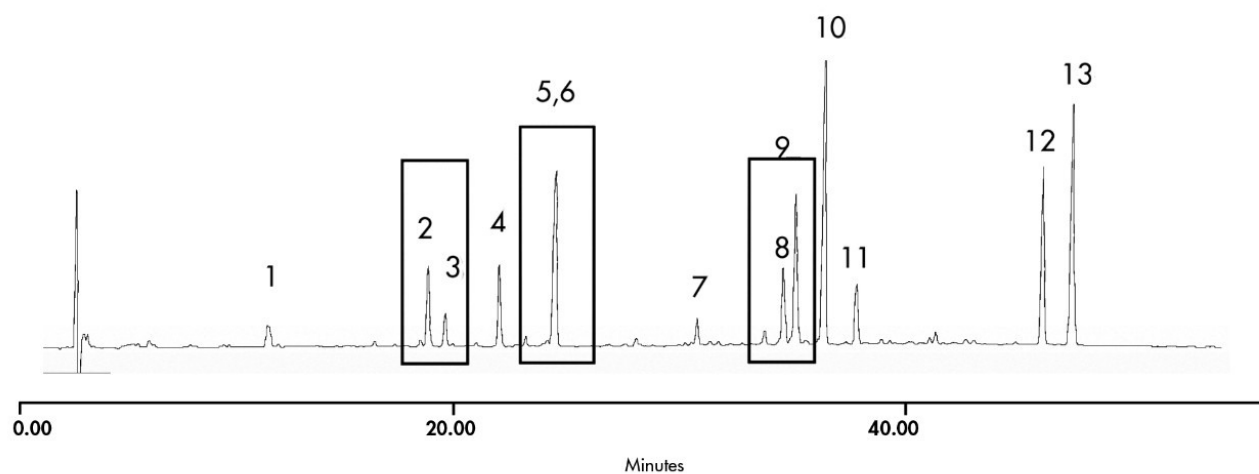
## Results and Discussion

---

Symmetry® C<sub>18</sub>, 4.6 x 150 mm, 5 µm, 100Å



Symmetry300™ C<sub>18</sub>, 4.6 x 150 mm, 5 µm, 300Å



## Featured Products

WA31763.67, June 2003

© 2022 Waters Corporation. All Rights Reserved.