

Cytochrome c Tryptic Digest - Pore Size Effects

Waters Corporation

This is an Application Brief and does not contain a detailed Experimental section.

Abstract

This application brief details on cytochrome c tryptic digest pore size effects using Symmetry Columns.

Introduction

The compound used in this study is cytochrome c tryptic digest.

Experimental

HPLC Method

Column: Symmetry C₁₈, 4.6 x 150 mm, 5 µm, 100Å

Guard column: Symmetry 300 C₁₈, 4.6 x 150 mm, 5 µm, 300Å

Part numbers: Column - WAT045905, Guard - WAT106157

Mobile phase A: 0.1% TFA in Water

Mobile phase B: 0.1% TFA in Acetonitrile

Flow rate: 0.75 mL/min

Injection volume: 20 µL

Temperature: 35 °C

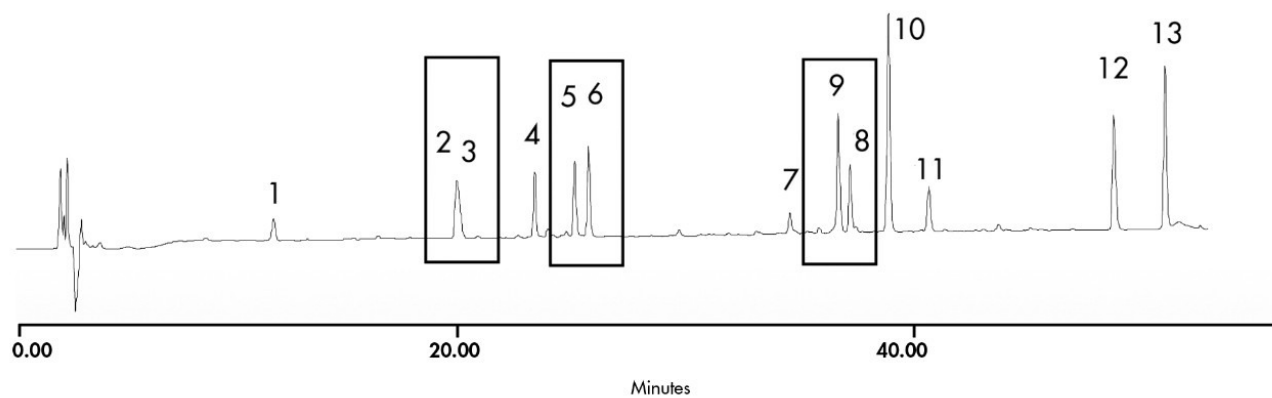
Detection: UV @ 214 nm

Gradient

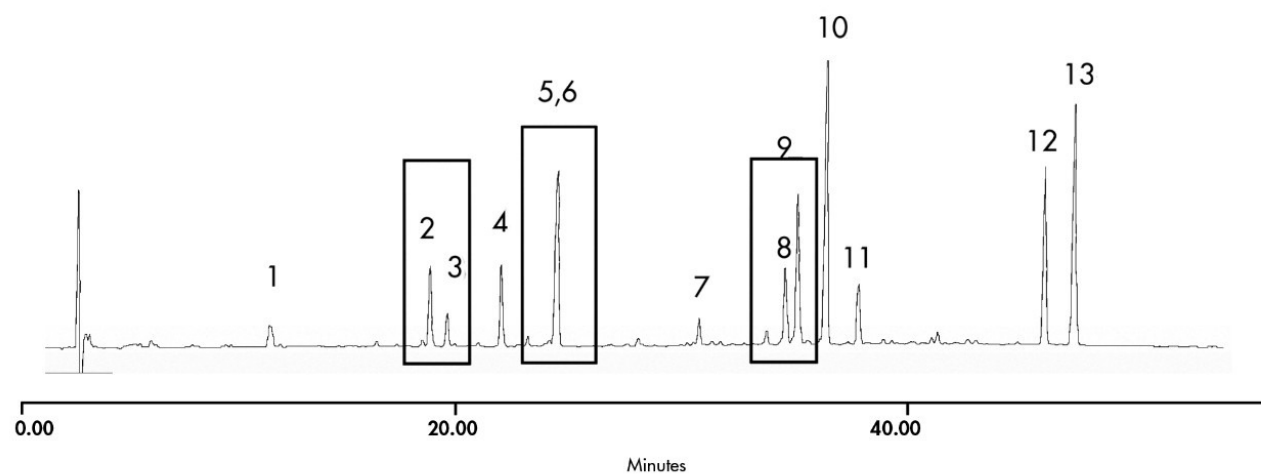
Time (min)	Profile	
	%A	%B
0	100	0
50	70	30

Results and Discussion

Symmetry® C₁₈, 4.6 x 150 mm, 5 µm, 100Å



Symmetry300™ C₁₈, 4.6 x 150 mm, 5 µm, 300Å



Featured Products

WA31763.67, June 2003

© 2022 Waters Corporation. All Rights Reserved.