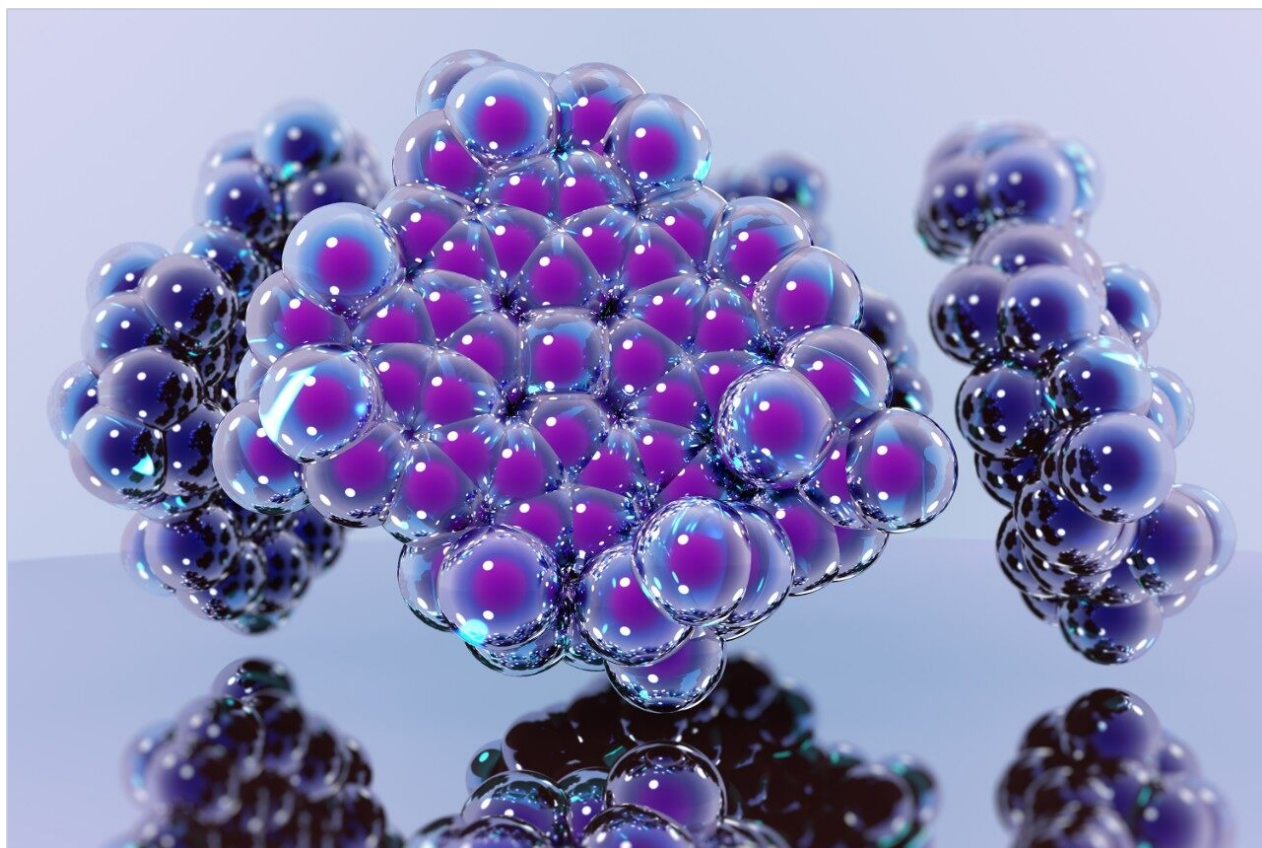


Cytochrome c Tryptic Digest - Column Lifetime Study, Critical Pair Resolution

Waters Corporation



This is an Application Brief and does not contain a detailed Experimental section.

Abstract

This application brief demonstrates analysis of cytochrome c tryptic digest.

Introduction

The compound analyzed in this study is cytochrome c tryptic digest.

Experimental

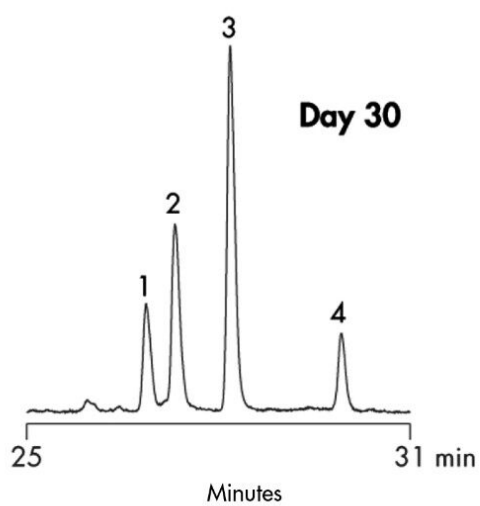
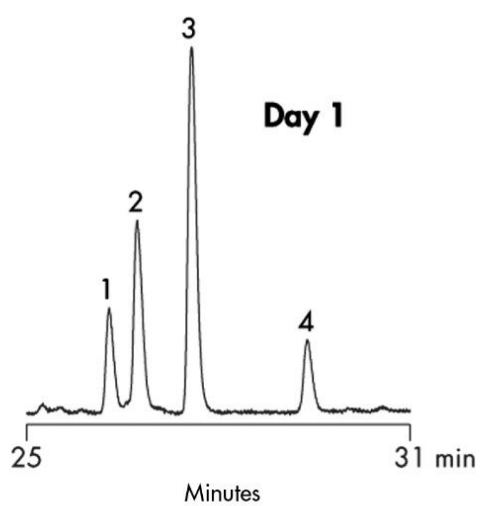
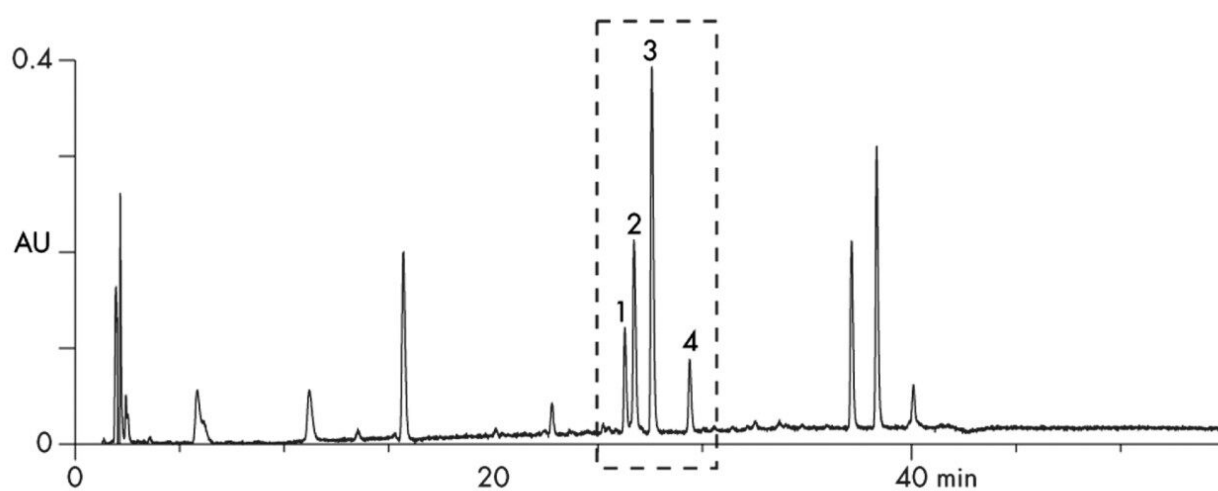
HPLC Method

Column:	Symmetry 300 C ₁₈ , 3.9 x 150 mm, 5 µm
Part Number:	WAT106154
Mobile phase A:	0.1% TFA water/acetonitrile 90:10
Mobile phase B:	0.1% TFA water/acetonitrile 40:60
Flow rate:	0.75 mL/min
Injection Volume:	20 µL
Temperature:	35 °C
Detection:	UV @ 214 nm

Gradient

Time (min)	Profile	
	%A	%B
0	100	0
45	34	66

Results and Discussion



Featured Products

WA31763.66, June 2003

