

Clonazepam

Waters Corporation



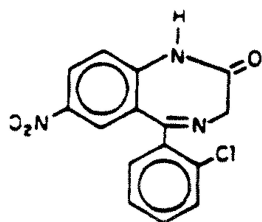
This is an Application Brief and does not contain a detailed Experimental section.

Abstract

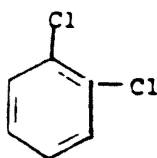
This application brief highlights the analysis of clonazepam using Symmetry C₁₈ columns.

Introduction

Clonazepam has been analyzed in this application brief.



1. Clonazepam



2. O-dichlorobenzene (IS)

Experimental

HPLC Method

Column:	Symmetry C ₁₈ , 4.6 x 250 mm, 5 µm (p/n: WAT054275)
Mobile phase:	Water/methanol/acetonitrile 40:30:30
Flow rate:	1.5 mL/min
Injection volume:	25 µL of sample with 40 µg/mL of clonazepam and 80 µL/mL of o-dichlorobenzene (internal standard)

Detection:

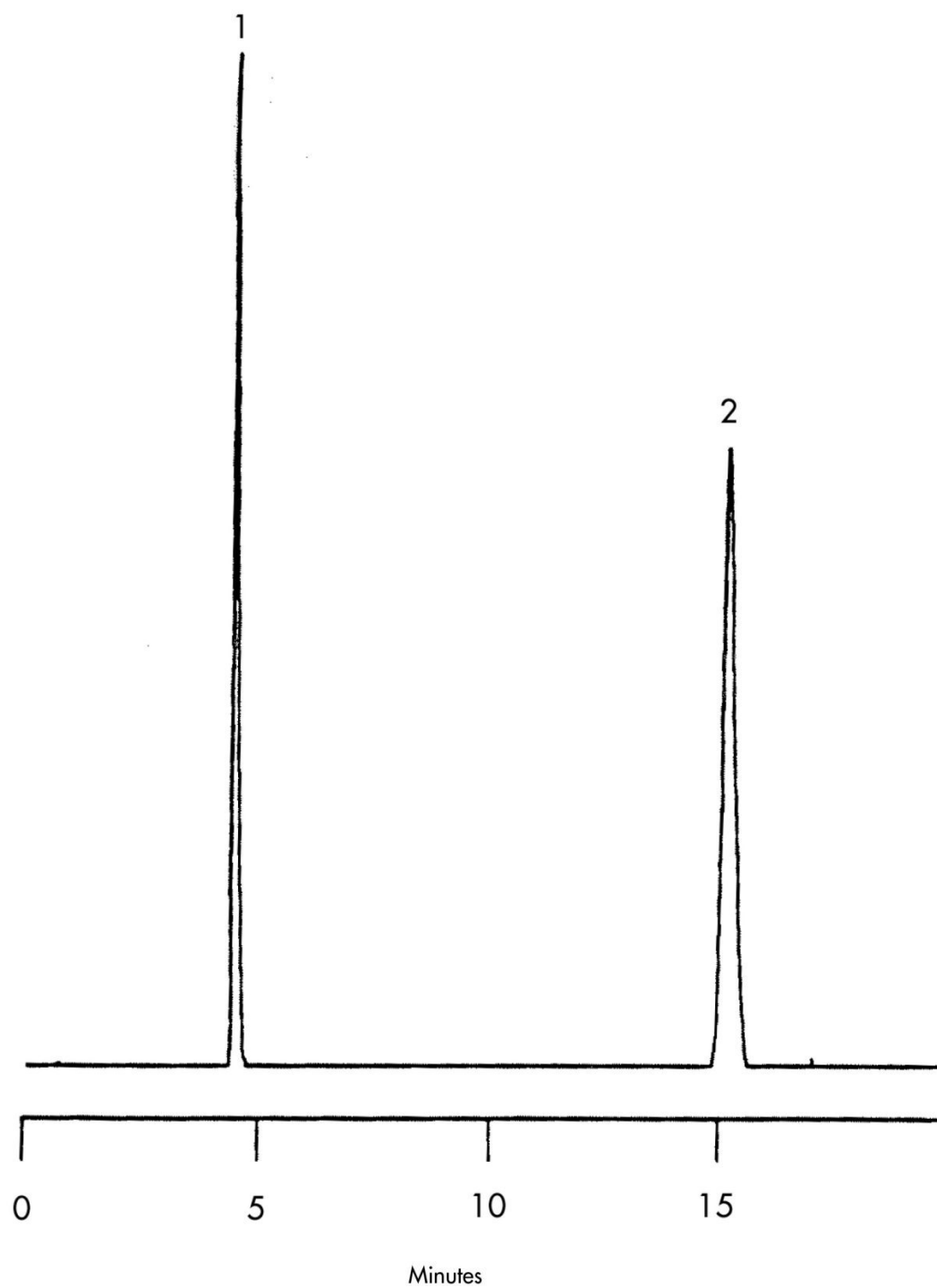
UV @ 254 nm

USP Tailing Factors

1. 1.08

2. 1.04

Results and Discussion



Featured Products

· [Alliance HPLC <https://www.waters.com/514248>](https://www.waters.com/514248)

WA31763.60, June 2003



© 2021 Waters Corporation. All Rights Reserved.