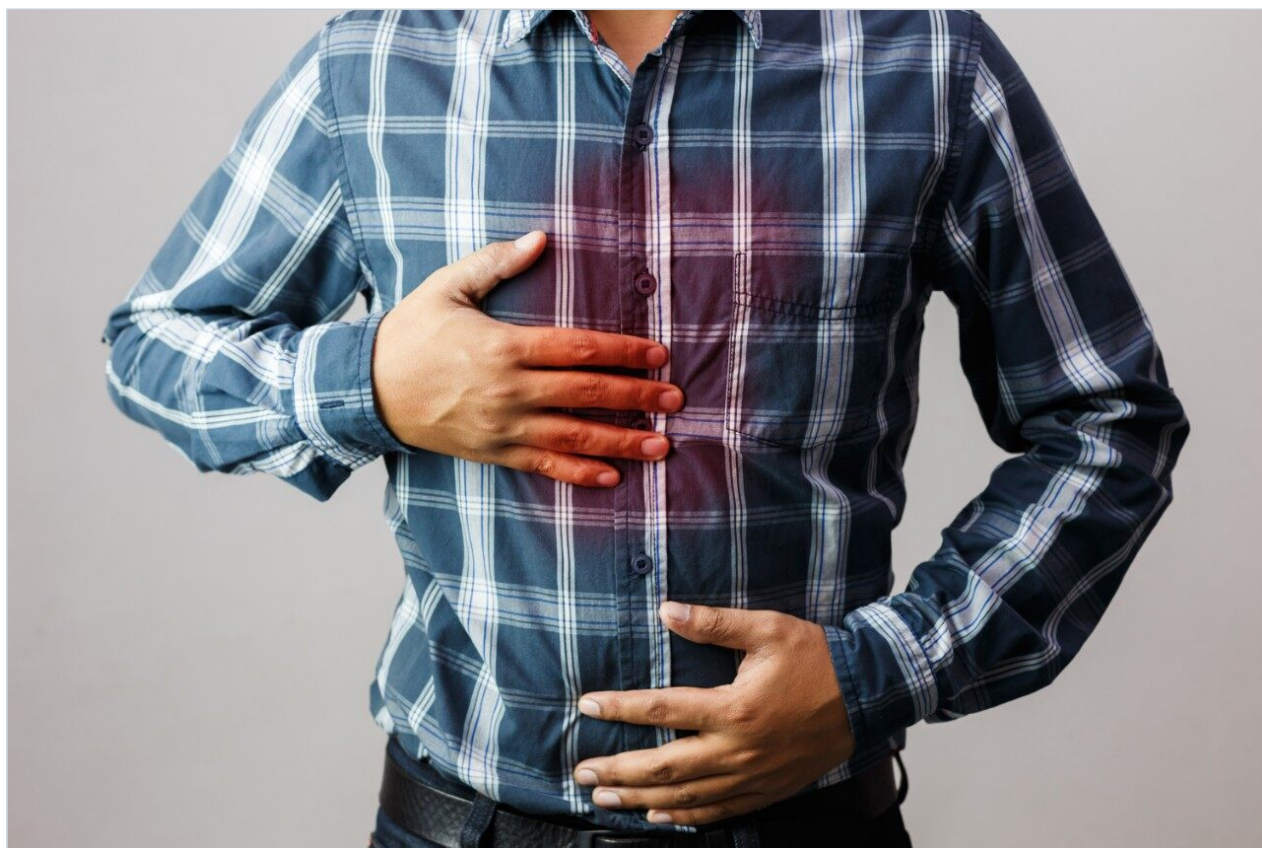


Note d'application

Cimetidine – (SymmetryShield RP₁₈)

Waters Corporation



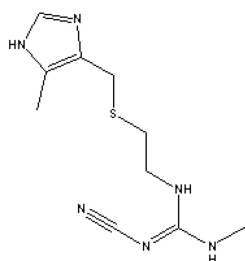
This is an Application Brief and does not contain a detailed Experimental section.

Abstract

This application brief highlights the analysis of cimetidine using SymmetryShield RP₁₈ columns.

Introduction

Cimetidine is studied in this application brief.



1. Cimetidine

Experimental

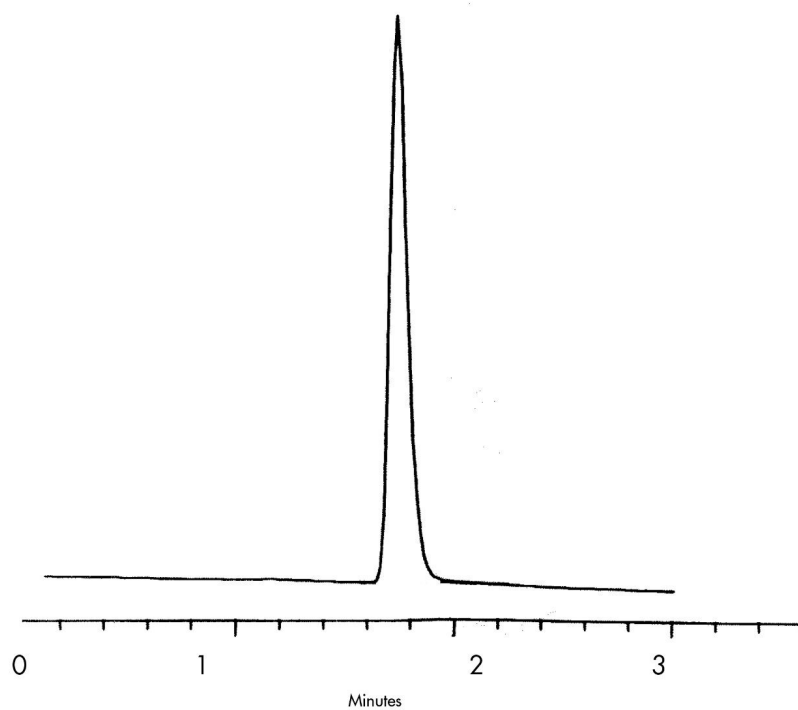
HPLC Method

Column:	SymmetryShield RP ₁₈ , 4.6 x 250 mm, 5 µm (p/n:186000112)
Mobile phase:	0.3 mL phosphoric acid, methanol/water 18:82
Flow rate:	1.8 mL/min
Injection volume:	50 µL
Detection:	UV @ 220 nm

USP Tailing Factors

1. 1.22

Results and Discussion



Featured Products

WA31763.56, June 2003