



Chlorpheniramine

Waters Corporation

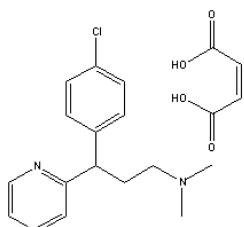


Abstract

This application brief highlights the analysis of chlorpheniramine using Symmetry C₈ columns.

Introduction

Chlorpheniramine is analyzed in this application brief.



1. Chlorpheniramine Maleate

Experimental

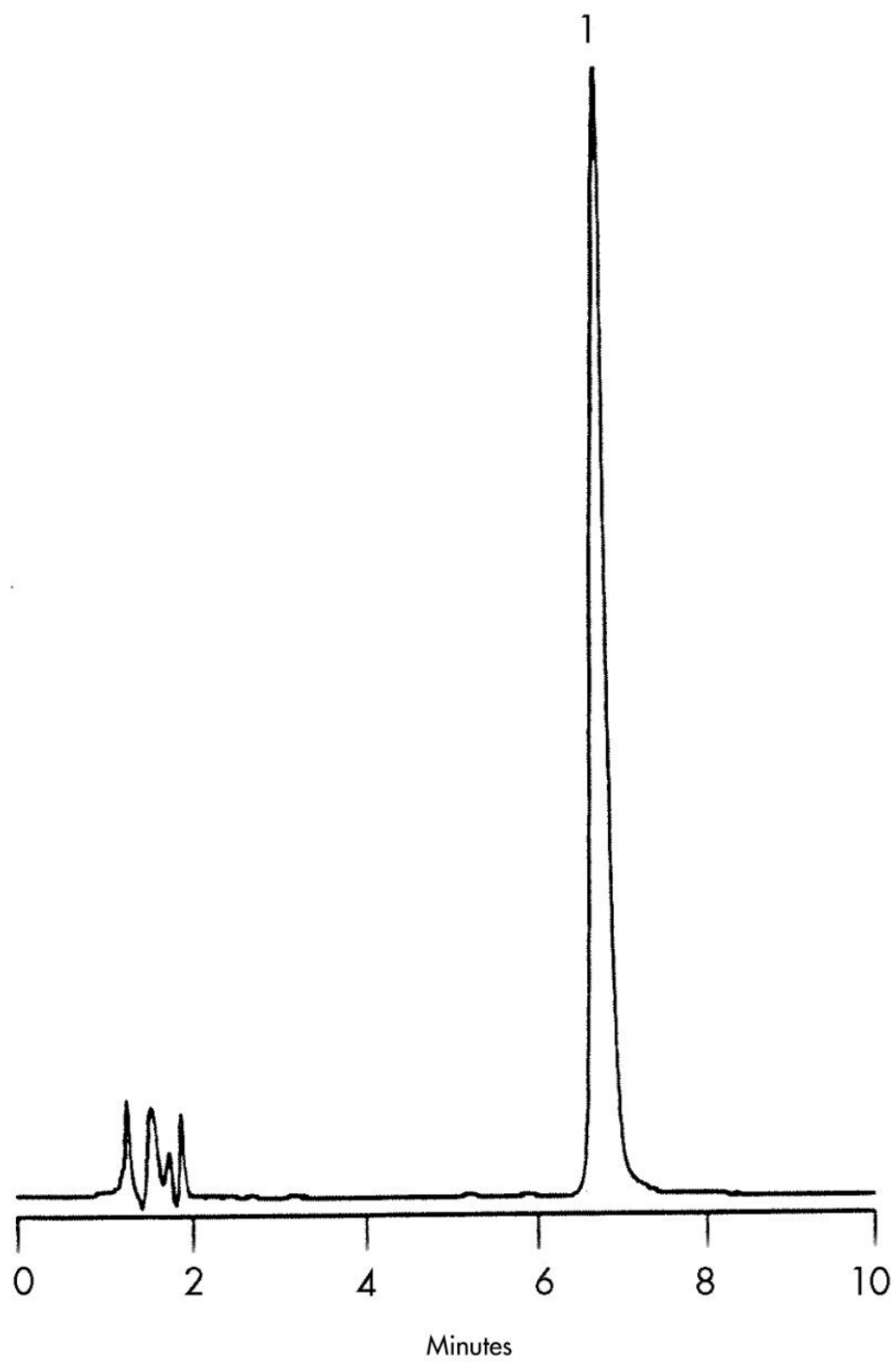
HPLC Method

Column:	Symmetry C ₈ , 3.9 x 150 mm, 5 µm (p/n: WAT046970)
Mobile phase:	50 mM potassium phosphate, pH 3.0/ acetonitrile 80:20
Flow rate:	1.0 mL/min
Injection volume:	5 µL of 120 µg/mL sample
Detection:	UV @ 261 nm

USP Tailing Factors

1. 1.33

Results and Discussion



Featured Products

WA31763.55, June 2003

© 2021 Waters Corporation. All Rights Reserved.