

## Chlorpheniramine

---

Waters Corporation



---

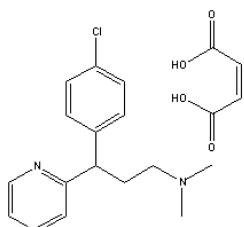
### Abstract

This application brief highlights the analysis of chlorpheniramine using Symmetry C<sub>8</sub> columns.

---

## Introduction

Chlorpheniramine is analyzed in this application brief.



**1. Chlorpheniramine Maleate**

---

## Experimental

### HPLC Method

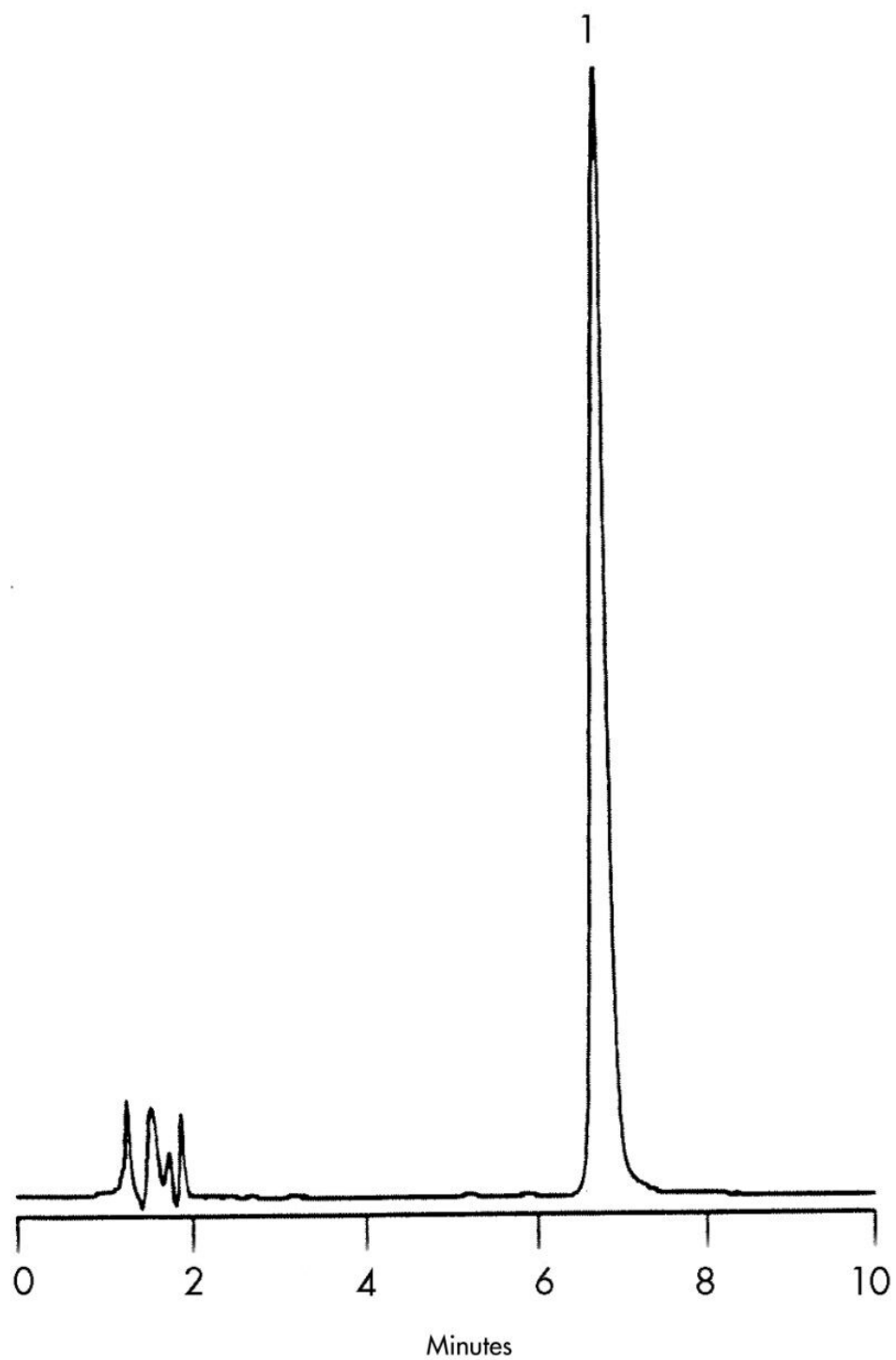
Column:	Symmetry C <sub>8</sub> , 3.9 x 150 mm, 5 µm (p/n: WAT046970 )
Mobile phase:	50 mM potassium phosphate, pH 3.0/ acetonitrile 80:20
Flow rate:	1.0 mL/min
Injection volume:	5 µL of 120 µg/mL sample
Detection:	UV @ 261 nm

### USP Tailing Factors

1. 1.33

---

## Results and Discussion



---

## Featured Products

WA31763.55, June 2003

© 2021 Waters Corporation. All Rights Reserved.