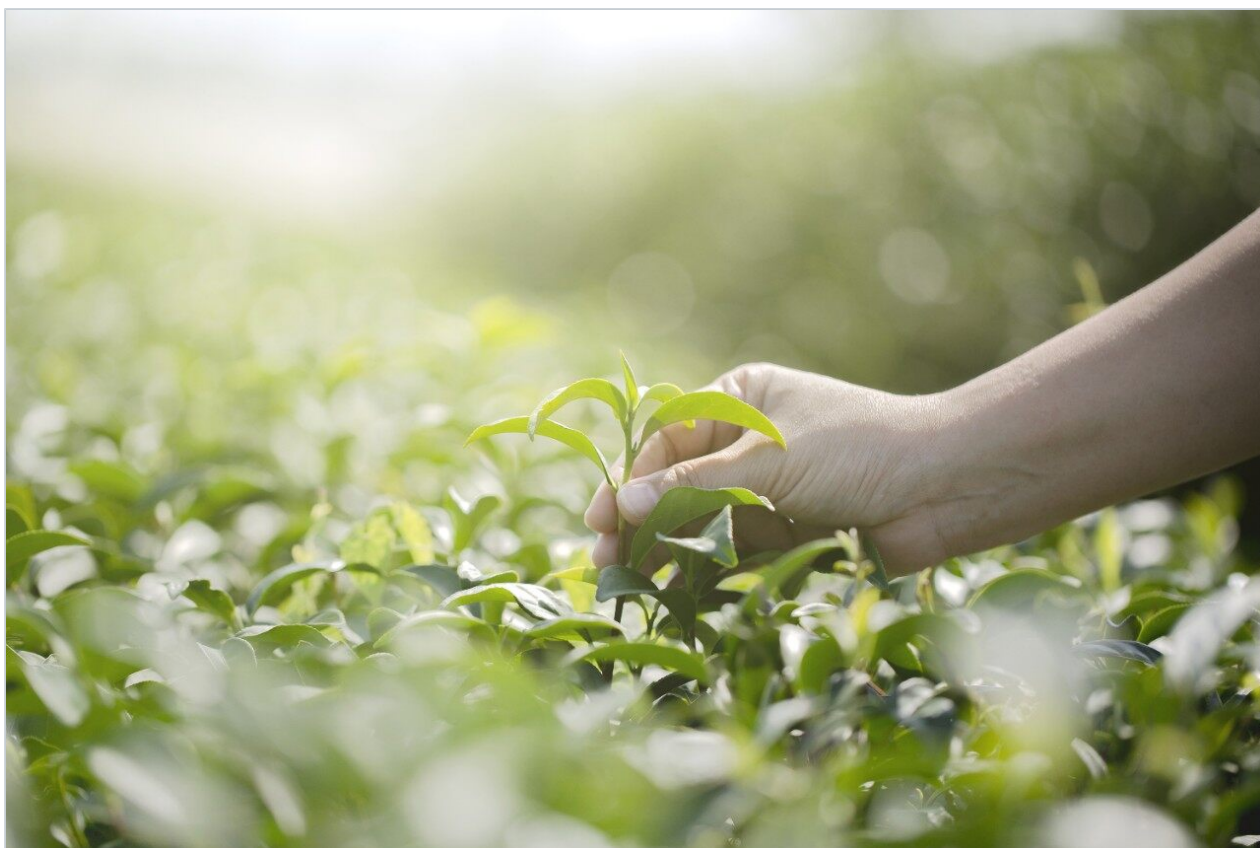


Note d'application

Catechins - 4.6 x 20 mm Intelligent Speed Separation

Waters Corporation



This is an Application Brief and does not contain a detailed Experimental section.

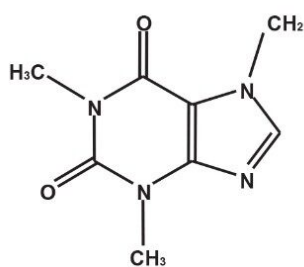
Abstract

This application brief demonstrates analysis of catechins using 4.6 x 20 mm intelligent speed separation Columns.

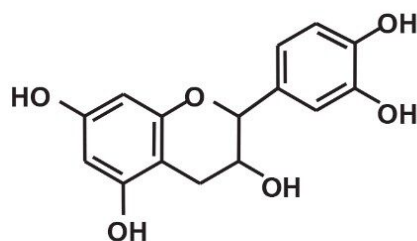
Introduction

The compounds used in this study are –

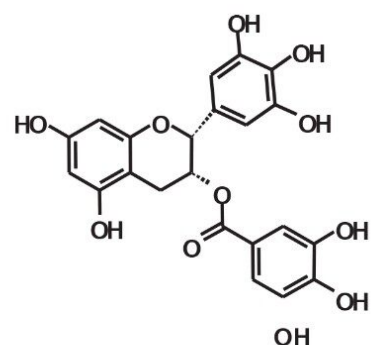
1. Caffeine
2. Epicatechin
3. Epigallocatechin Gallate



1. Caffeine



2. Epicatechin



3. Epigallocatechin Gallate

Experimental

HPLC Method

Column:

Symmetry C₁₈, 4.6 x 20 mm, 3.5 μm /S

Symmetry Shield RP₁₈, 4.6 x 20 mm, 3.5 μm /S

Part numbers:

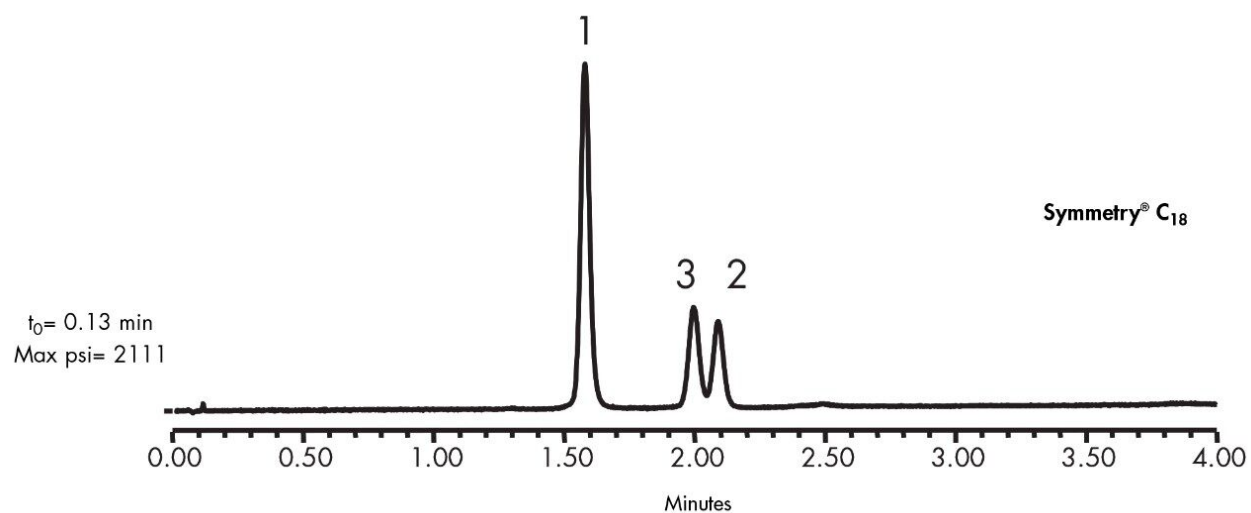
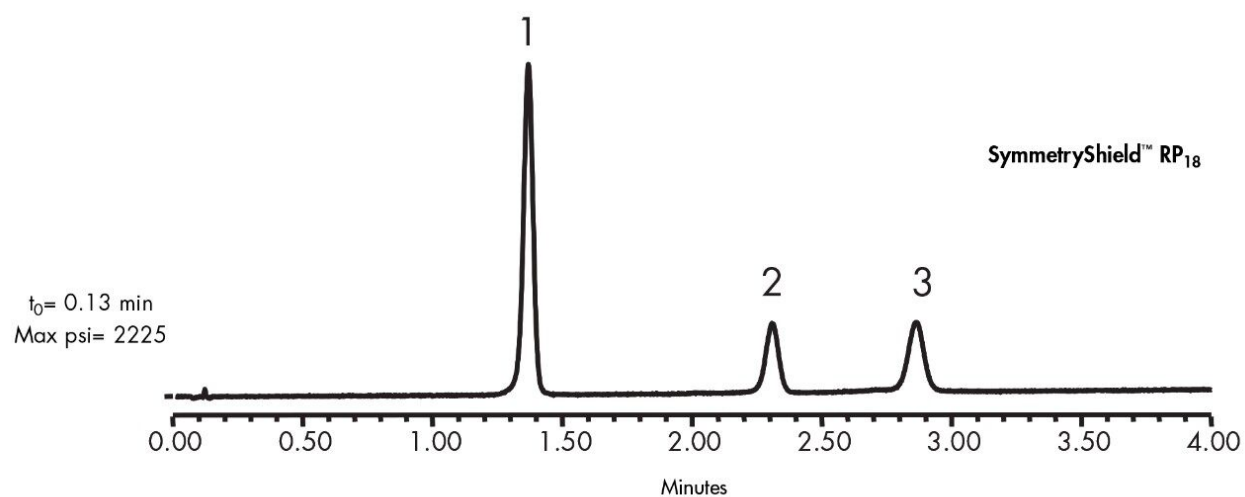
Symmetry - 186002090, Shield - 186002092

Mobile phase A:	0.1% HCOOH in Water
Mobile phase B:	0.1% HCOOH in MeOH
Flow rate:	3.0 mL/min
Injection volume:	10 µL
Temperature:	30 °C
Detection:	UV @ 280 nm

Gradient

Time (min)	Profile	
	%A	%B
0.0	100	0
4.0	60	40

Results and Discussion



Featured Products

WA31763.48, June 2003

