

응용 자료

Captopril

Waters Corporation



This is an Application Brief and does not contain a detailed Experimental section.

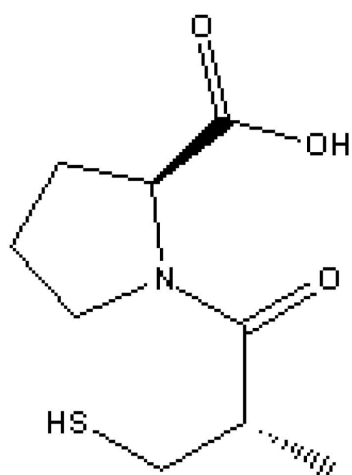
Abstract

This application brief demonstrates analysis of captopril.

Introduction

The compound analyzed in this study is captopril.

Compounds	USP Tailing Factors
Captopril	1.0
Captopril Disulfide	1.2



1. Captopril

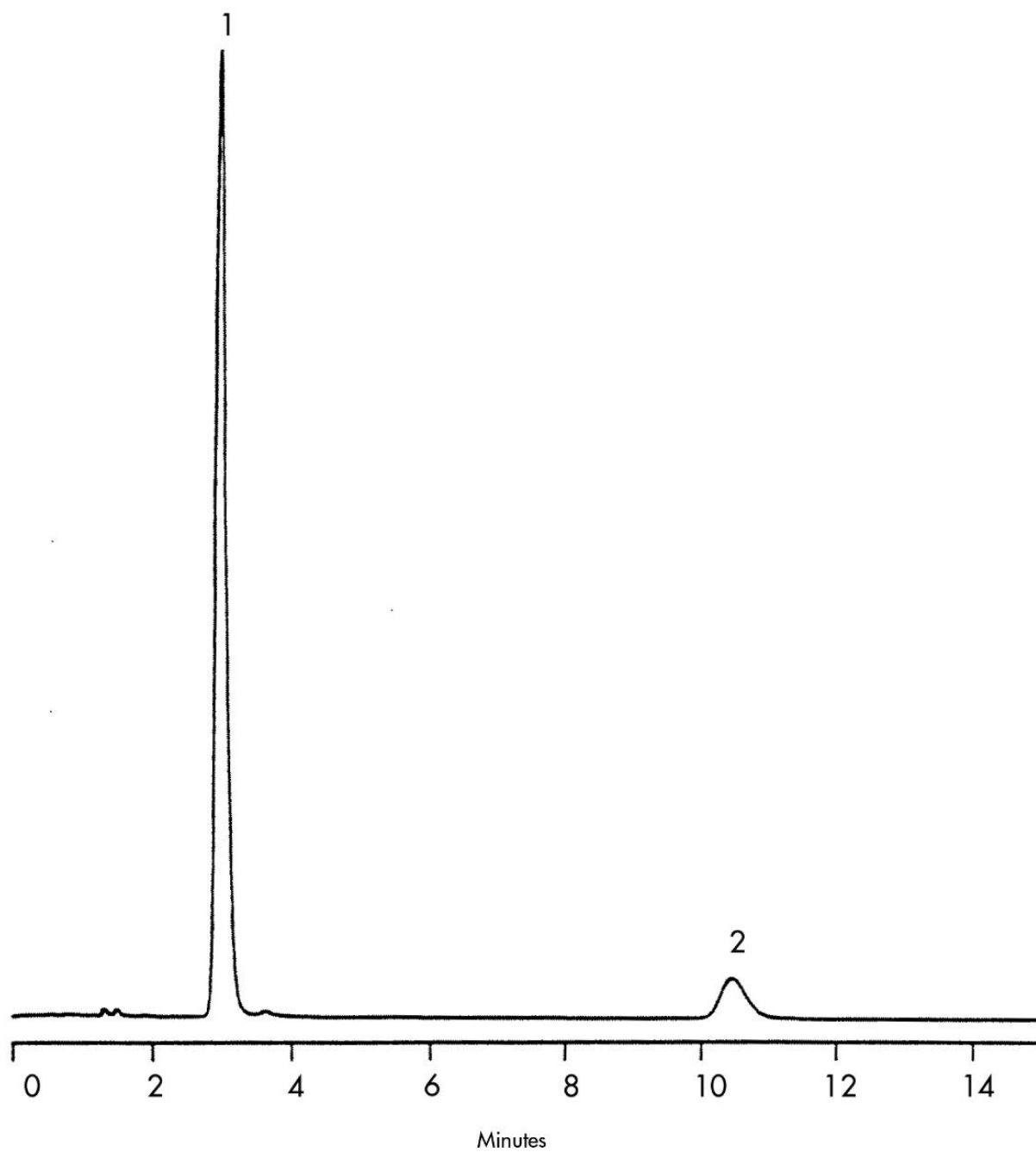
Experimental

HPLC Method

Column: Symmetry C₁₈, 3.9 x 150 mm, 5 μm

Part number:	WAT046980
Mobile phase:	0.1% phosphoric acid in water/methanol 60:40
Flow rate:	1.0 mL/min
Injection volume:	10 μ L of 200 μ g/mL captopril and 20 μ g/mL of captopril disulfide
Temperature:	40 $^{\circ}$ C
Detection:	UV @ 220 nm

Results and Discussion



Featured Products

WA31763.46, June 2003

© 2021 Waters Corporation. All Rights Reserved.