

## Antidepressants in Plasma

---

Waters Corporation

This is an Application Brief and does not contain a detailed Experimental section.

---

### Abstract

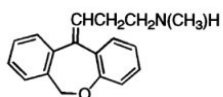
This application brief details on the analysis of antidepressants in plasma using Symmetry Columns.

---

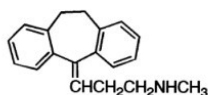
### Introduction

The compounds analyzed in this study are:

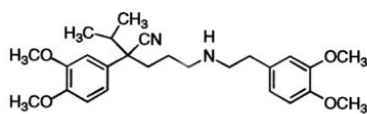
1. Nordoxepin
  2. Nortriptyline
  3. Norverapamil
  4. Doxepin
  5. Amitriptyline
  6. Verapamil
  7. Methoxyverapamil (I.S.)
-



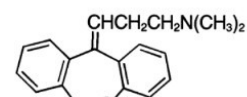
**1. Nordoxepin**



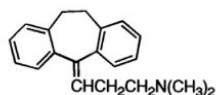
**2. Nortriptyline**



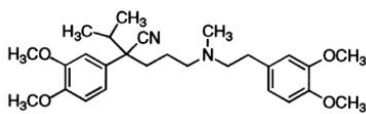
**3. Norverapamil**



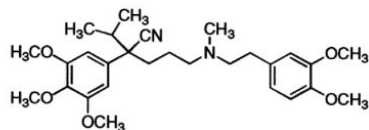
**4. Doxepin**



**5. Amitriptyline**



**6. Verapamil**



**7. Methoxyverapamil (I.S.)**

## Experimental

### HPLC Method

Column:	Symmetry Shield RP <sub>8</sub> , 3.9 x 150 mm, 5 µm
Part number:	WAT200655
Mobile phase:	100 mM phosphate pH 7.0/acetonitrile/methanol 55:35:10
Flow rate:	1.0 mL/min
Injection volume:	100 µL acidified plasma sample solution
Temperature:	30 °C
Detection:	UV @ 230 nm

# Oasis® HLB Extraction Method

Oasis® HLB 1 cc/30 mg Extraction Cartridge  
Part Number WAT094225

## Condition:

1 mL methanol/1 mL water

## Load:

1 mL of acidified plasma  
sample solution

## Wash:

1 mL of 70% methanol,  
2% ammonium hydroxide

## Elute:

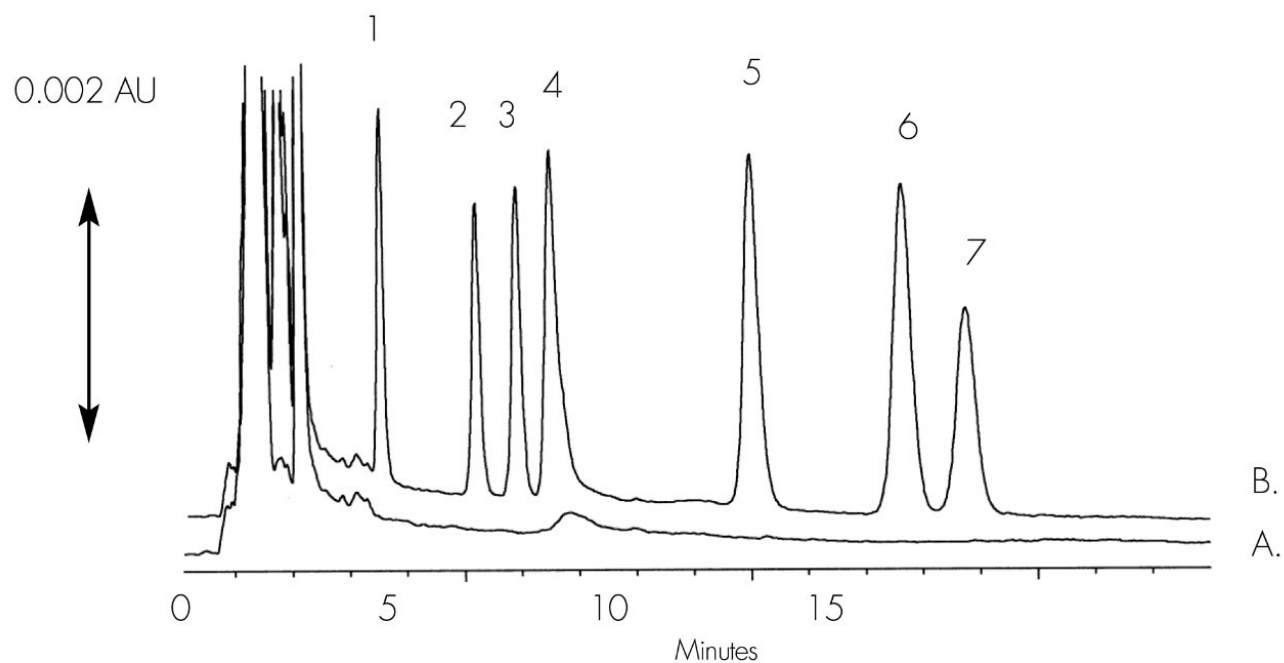
0.5 mL of 70% methanol,  
2% acetic acid

## Evaporate and Reconstitute:

Not required

---

## Results and Discussion



---

*Chromatogram of Plasma Extracts: A) Blank B) Spiked Sample.*

---

## Featured Products

WA31763.29, June 2003

© 2022 Waters Corporation. All Rights Reserved.