

## Amphetamines

---

Waters Corporation

This is an Application Brief and does not contain a detailed Experimental section.

---

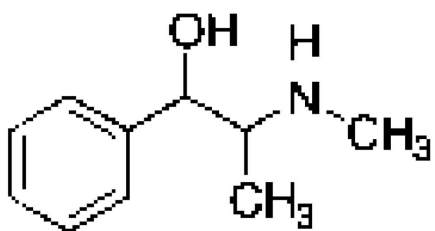
### Abstract

This application brief demonstrates analysis of amphetamines using Symmetry Shield RP<sub>18</sub> Column.

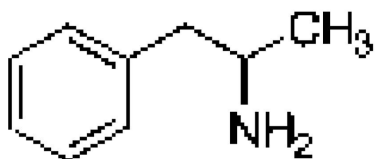
---

### Introduction

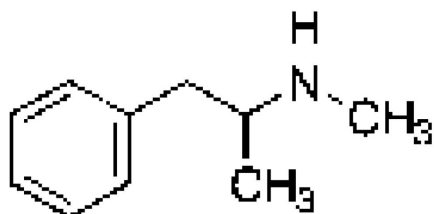
The compound analyzed in this study is amphetamines.



### 1. Ephedrine (I.S.)



### 2. Amphetamine



### 3. Methamphetamine

---

Experimental

HPLC Method

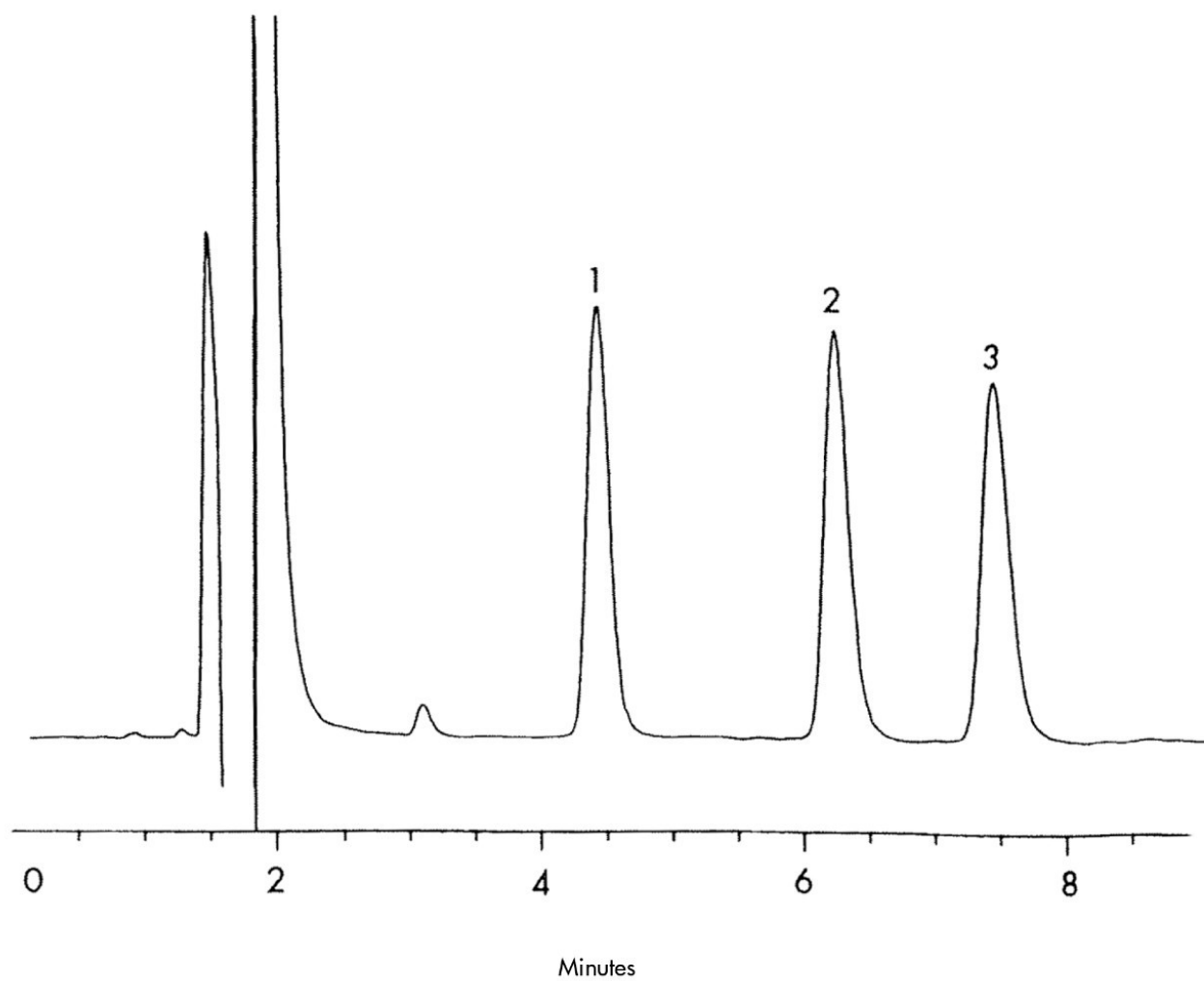
Column:	Symmetry Shield RP <sub>18</sub> , 3.9 x 150 mm, 5 µm,
Part number:	186000108
Mobile phase:	0.1% TFA in Water/acetonitrile/methanol 91:7:2
Flow rate:	1.0 mL/min
Injection volume:	50 µL
Detection:	UV @ 210

## USP Tailing Factors

1. 1.28
2. 1.32
3. 1.30

---

## Results and Discussion



---

## Featured Products

WA31763.26, June 2003

© 2022 Waters Corporation. All Rights Reserved.