

Application Note

Amphetamines

Waters Corporation

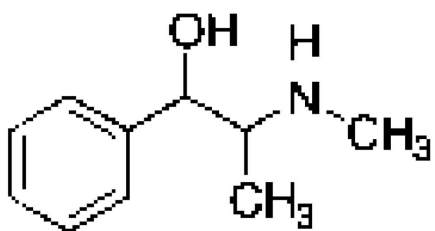
This is an Application Brief and does not contain a detailed Experimental section.

Abstract

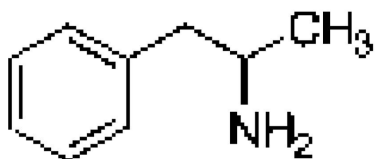
This application brief demonstrates analysis of amphetamines using Symmetry Shield RP₁₈ Column.

Introduction

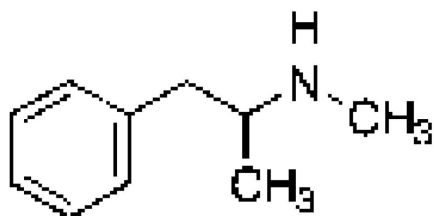
The compound analyzed in this study is amphetamines.



1. Ephedrine (I.S.)



2. Amphetamine



3. Methamphetamine

Experimental

HPLC Method

Column:	Symmetry Shield RP ₁₈ , 3.9 x 150 mm, 5 µm,
Part number:	186000108
Mobile phase:	0.1% TFA in Water/acetonitrile/methanol 91:7:2
Flow rate:	1.0 mL/min
Injection volume:	50 µL
Detection:	UV @ 210

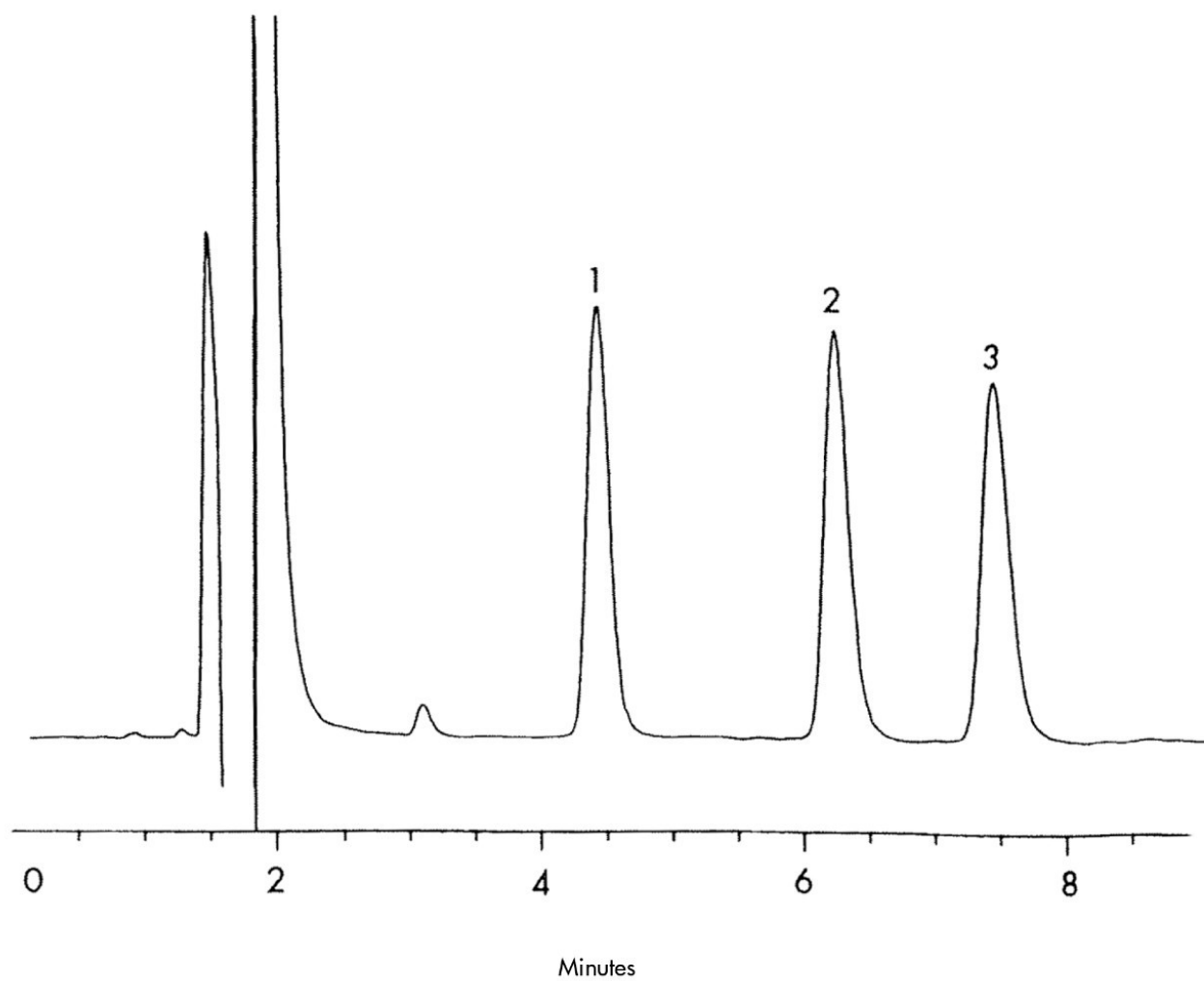
USP Tailing Factors

1. 1.28

2. 1.32

3. 1.30

Results and Discussion



Featured Products

WA31763.26, June 2003

© 2022 Waters Corporation. All Rights Reserved.