

Nota applicativa

Amoxapine and Trazodone

Waters Corporation



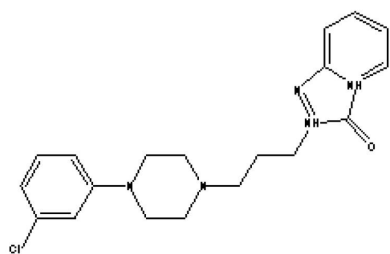
This is an Application Brief and does not contain a detailed Experimental section.

Abstract

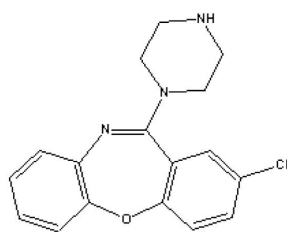
This application brief highlights the analysis of amoxapine and trazodone using Symmetry C₈ columns.

Introduction

Compounds studied in this study are Amoxapine and Trazodone.



1. Trazodone



2. Amoxapine

Experimental

HPLC Method

Column:	Symmetry C ₈ , 3.9 x 150 mm, 5 µm (p/n: WAT046970)
Guard Column:	Sentry Guard Column 3.9 x 20 mm, 5 µm (p/n: WAT054250)
Mobile phase:	20 mM potassium phosphate pH 7.0/ methanol 35:65

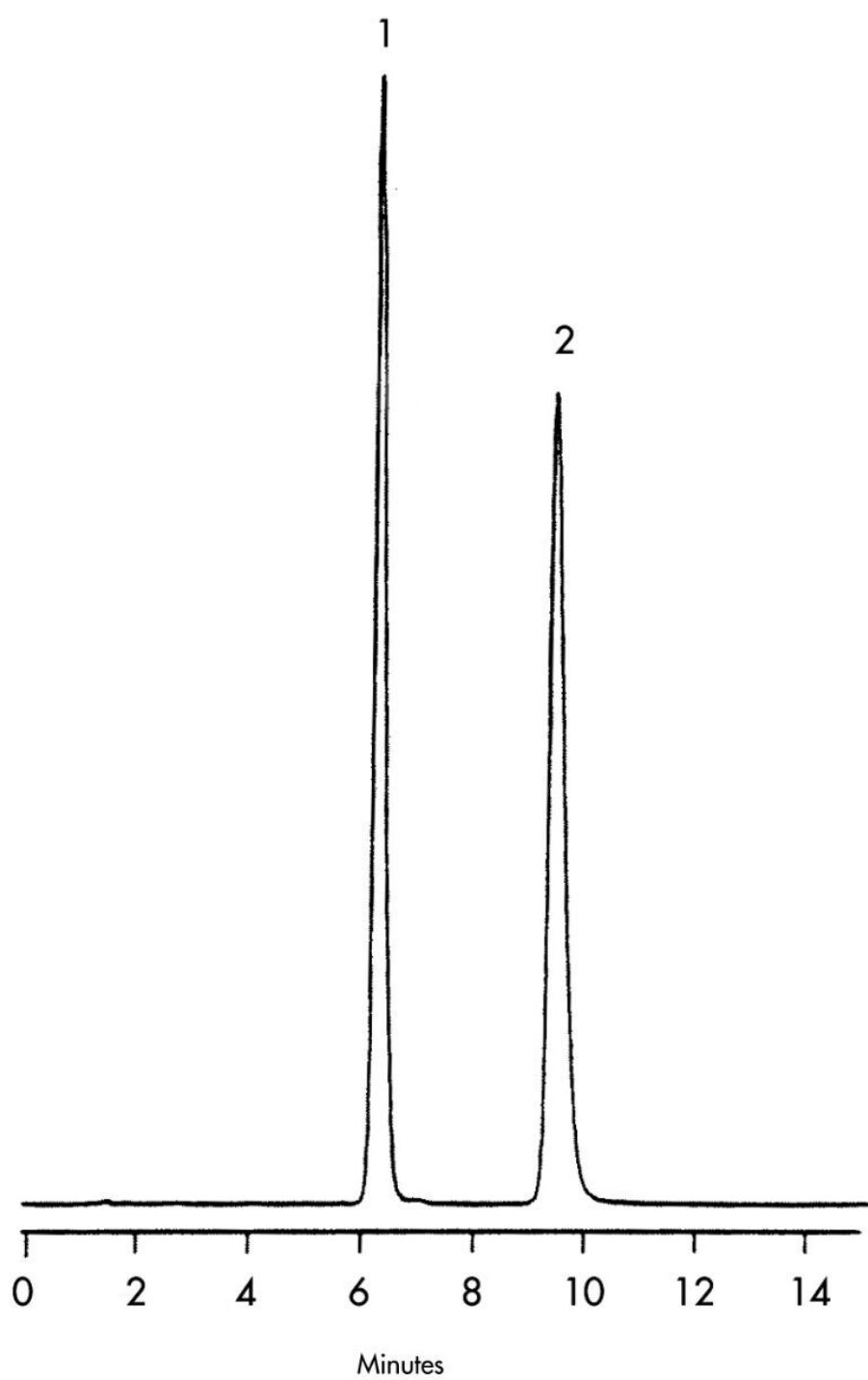
Flow rate:	1.0 mL/min
Injection volume:	10 μ L of 100 μ g/mL amoxapine and 100 μ g/mL trazodone
Detection:	UV @ 254 nm

USP Tailing Factors

1. 1.1

2. 1.4

Results and Discussion



Featured Products

WA31763.21, June 2003

© 2021 Waters Corporation. All Rights Reserved.