

Note d'application

## Amoxapine and Trazodone

---

Waters Corporation



This is an Application Brief and does not contain a detailed Experimental section.

---

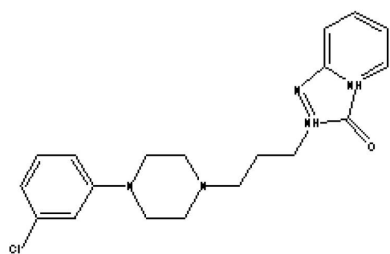
### Abstract

This application brief highlights the analysis of amoxapine and trazodone using Symmetry C<sub>8</sub> columns.

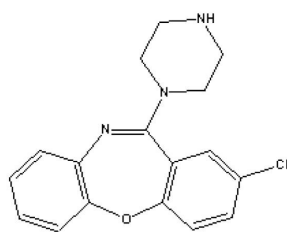
---

## Introduction

Compounds studied in this study are Amoxapine and Trazodone.



**1. Trazodone**



**2. Amoxapine**

---

## Experimental

### HPLC Method

Column:	Symmetry C <sub>8</sub> , 3.9 x 150 mm, 5 µm (p/n: WAT046970)
Guard Column:	Sentry Guard Column 3.9 x 20 mm, 5 µm (p/n: WAT054250)
Mobile phase:	20 mM potassium phosphate pH 7.0/ methanol 35:65

Flow rate:	1.0 mL/min
Injection volume:	10 $\mu$ L of 100 $\mu$ g/mL amoxapine and 100 $\mu$ g/mL trazodone
Detection:	UV @ 254 nm

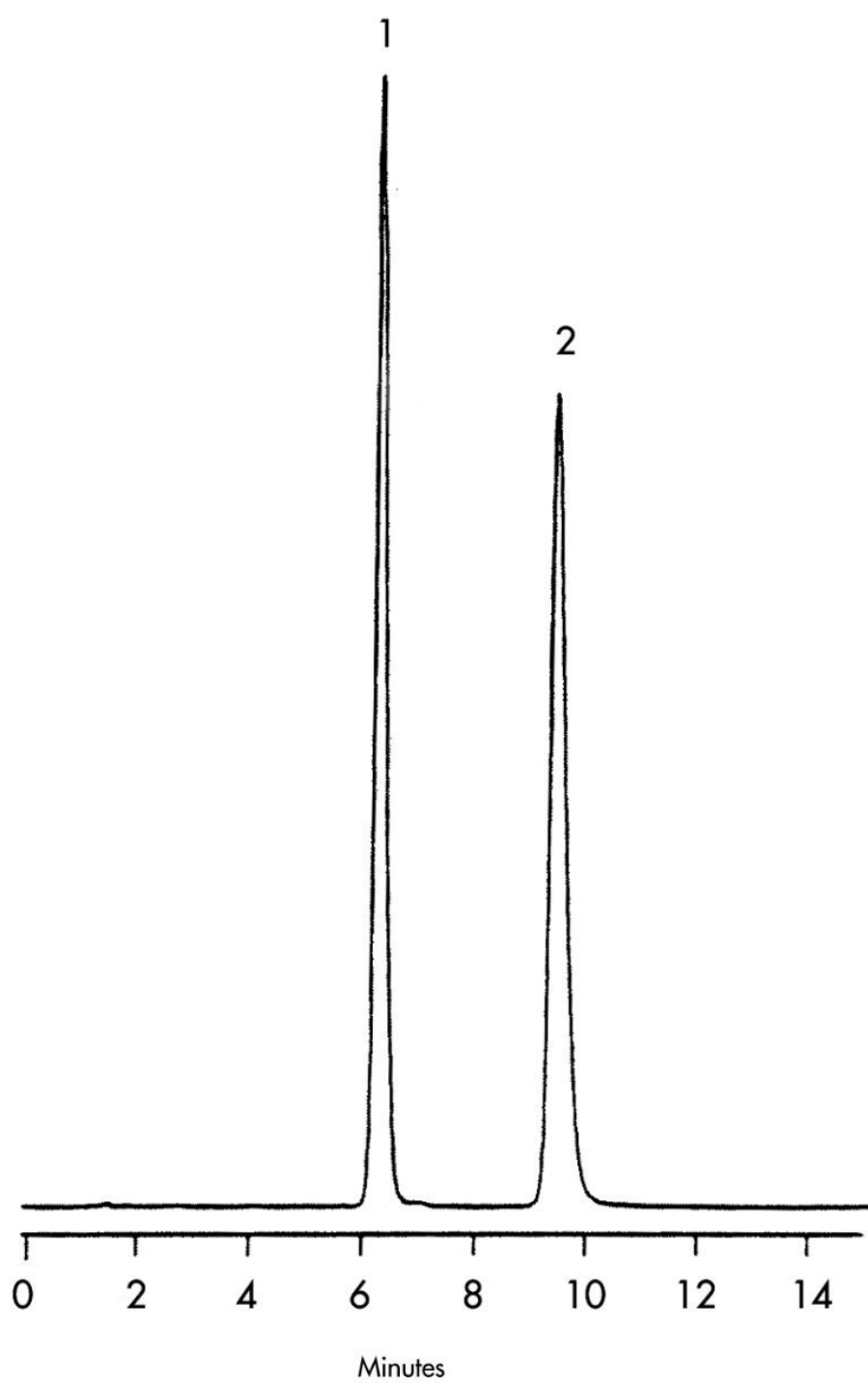
## USP Tailing Factors

1. 1.1

2. 1.4

---

## Results and Discussion



---

Featured Products

WA31763.21, June 2003

© 2021 Waters Corporation. All Rights Reserved.