



## Albuterol (Salbutamol) in Serum

---

Waters Corporation



This is an Application Brief and does not contain a detailed Experimental section.

---

### Abstract

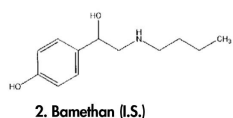
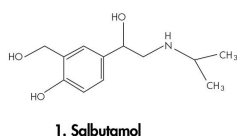
This application brief highlights the analysis of Albuterol in serum using Symmetry C<sub>18</sub> columns.

---

## Introduction

Compounds used in this study are:

1. Salbutamol
2. Bamethan (I.S.)



---

## Experimental

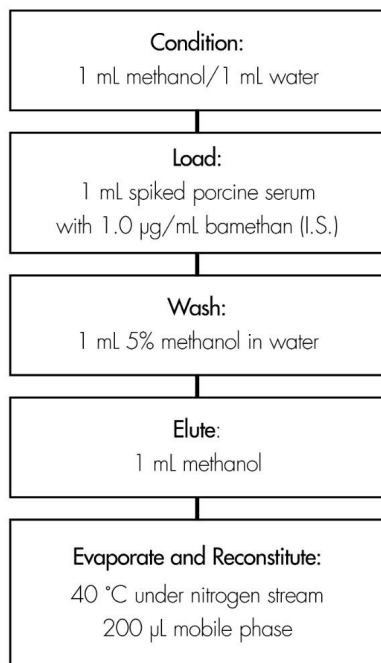
### HPLC Method

Column:	Symmetry C <sub>18</sub> , 3.9 x 150 mm, 5 µm(p/n: WAT046980)
Guard Column:	Sentry Guard Column 3.9 x 20 mm, 5 µm(p/n: WAT054250)
Mobile phase:	5 mM hexanesulfonate and 1% glacial acetic acid in water/1% glacial acetic acid in methanol, 75:25
Flow rate:	1.0 mL/min
Injection volume:	20 µL of reconstituted porcine serum extract
Detection:	Fluorescence, Ex = 275 nm, Em = 310 nm

## Oasis® HLB Extraction Method

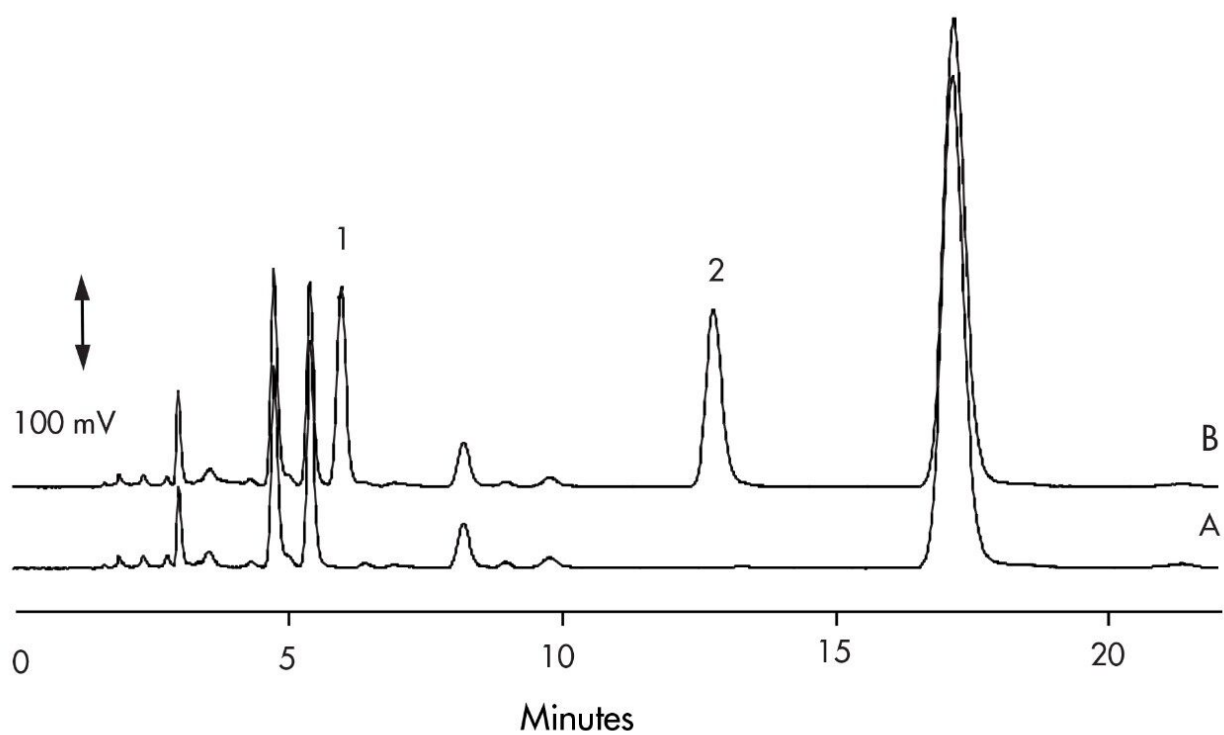
Oasis® HLB 1 cc/30 mg Extraction Cartridge

Part Number WAT094225



---

## Results and Discussion



Compound	Concentration µg/mL	% Recovery	%RSD (n=6)
Salbutamol	0.400	98.8%	3.4%
	2.00	98.0%	3.5%

## Featured Products

WA31763.19, June 2003

