

Nota applicativa

Albuterol (Salbutamol) in Serum

Waters Corporation



This is an Application Brief and does not contain a detailed Experimental section.

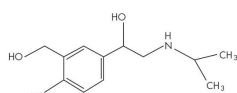
Abstract

This application brief highlights the analysis of Albuterol in serum using Symmetry C₁₈ columns.

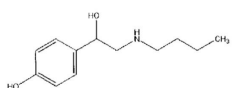
Introduction

Compounds used in this study are:

1. Salbutamol
2. Bamethan (I.S.)



1. Salbutamol



2. Bamethan (I.S.)

Experimental

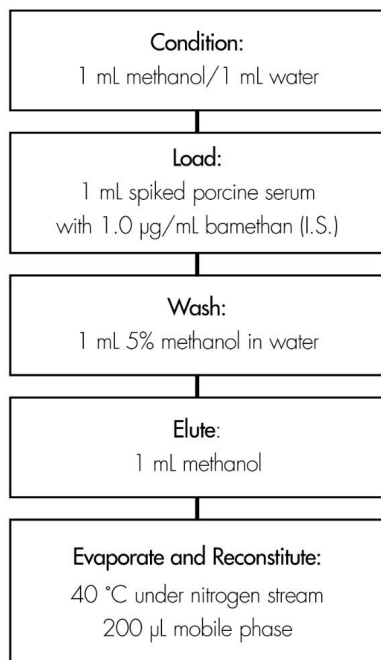
HPLC Method

Column:	Symmetry C ₁₈ , 3.9 x 150 mm, 5 μm(p/n: WAT046980)
Guard Column:	Sentry Guard Column 3.9 x 20 mm, 5 μm(p/n: WAT054250)
Mobile phase:	5 mM hexanesulfonate and 1% glacial acetic acid in water/1% glacial acetic acid in methanol, 75:25
Flow rate:	1.0 mL/min
Injection volume:	20 μL of reconstituted porcine serum extract
Detection:	Fluorescence, Ex = 275 nm, Em = 310 nm

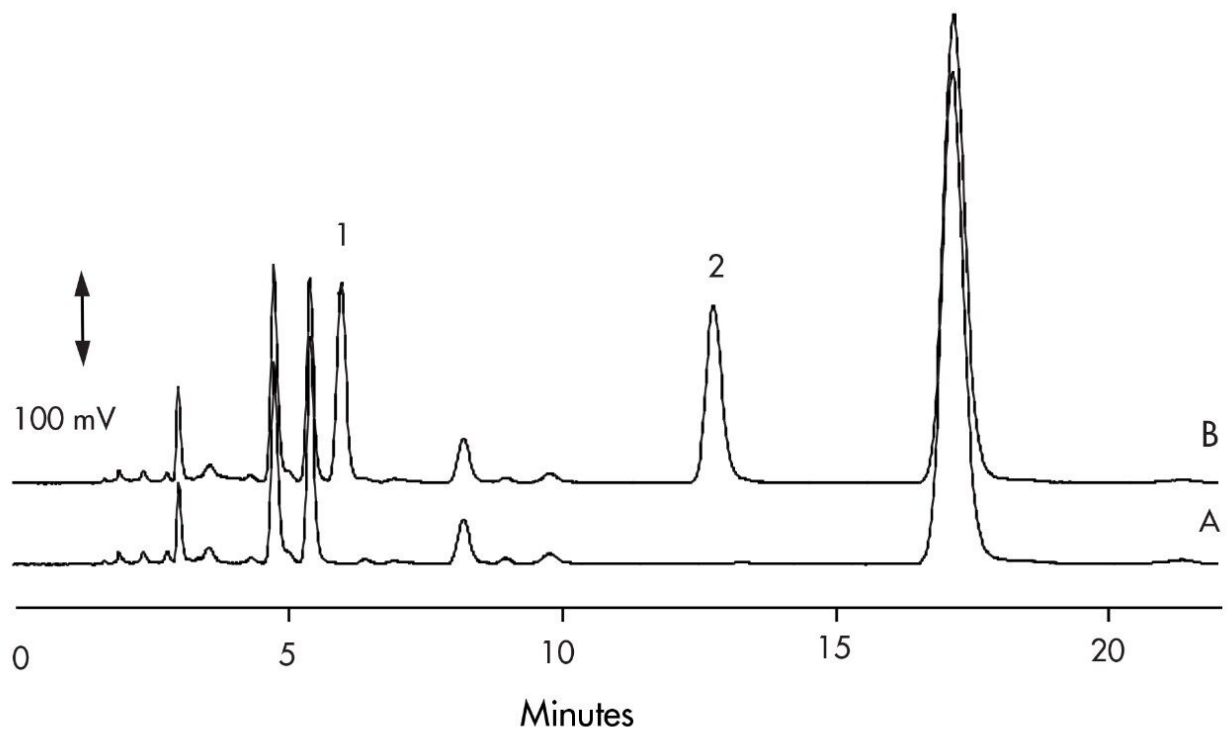
Oasis® HLB Extraction Method

Oasis® HLB 1 cc/30 mg Extraction Cartridge

Part Number WAT094225



Results and Discussion



Compound	Concentration µg/mL	% Recovery	%RSD (n=6)
Salbutamol	0.400	98.8%	3.4%
	2.00	98.0%	3.5%

Featured Products

WA31763.19, June 2003

© 2021 Waters Corporation. All Rights Reserved.