

## Tricyclic Antidepressants in Plasma

---

Waters Corporation



This is an Application Brief and does not contain a detailed Experimental section.

### Abstract

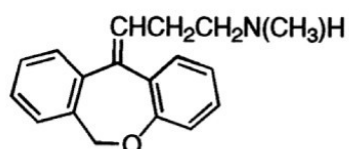
This application brief demonstrates analysis of tricyclic antidepressants in plasma.

## Introduction

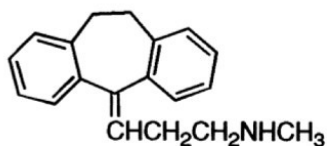
The compounds used in this study are –

Spiked at 500 ng/mL versus Blank:

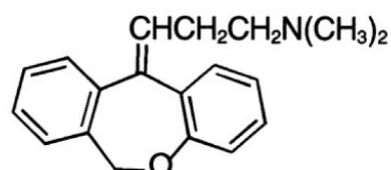
1. Nordoxepin (I.S.)
2. Nortriptyline
3. Doxepin
4. Imipramine
5. Amitriptyline
6. Trimipramine



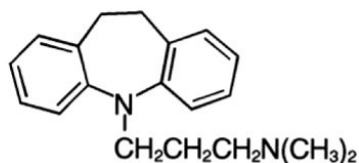
**1. Nordoxepin**



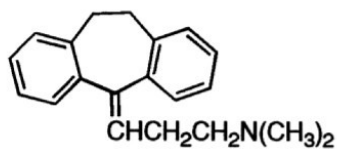
**2. Nortriptyline**



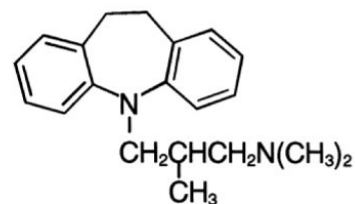
**3. Doxepin**



**4. Imipramine**



**5. Amitriptyline**



**6. Trimipramine**

## Experimental

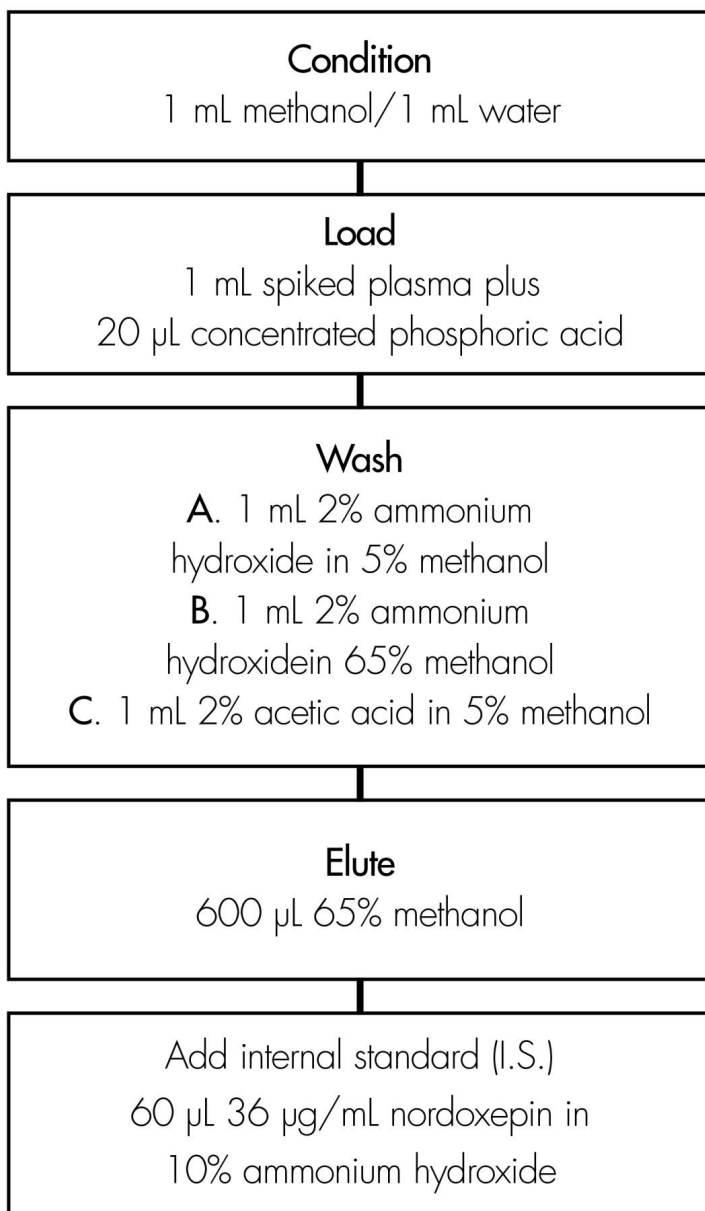
### HPLC Method

---

Column:	Symmetry Shield RP <sub>8</sub> , 4.6 x 75 mm, 3.5 μm
Part numbers:	WAT094263
Mobile phase:	50 mM phosphate, pH 7/methanol 26:74
Flow rate:	1.4 mL/min
Injection volume:	1 mL spiked plasma plus 20 μL concentrated phosphoric acid, 100 μL injection
Temperature:	29 °C
Detection:	UV @ 254 nm

# Oasis® HLB Extraction Method

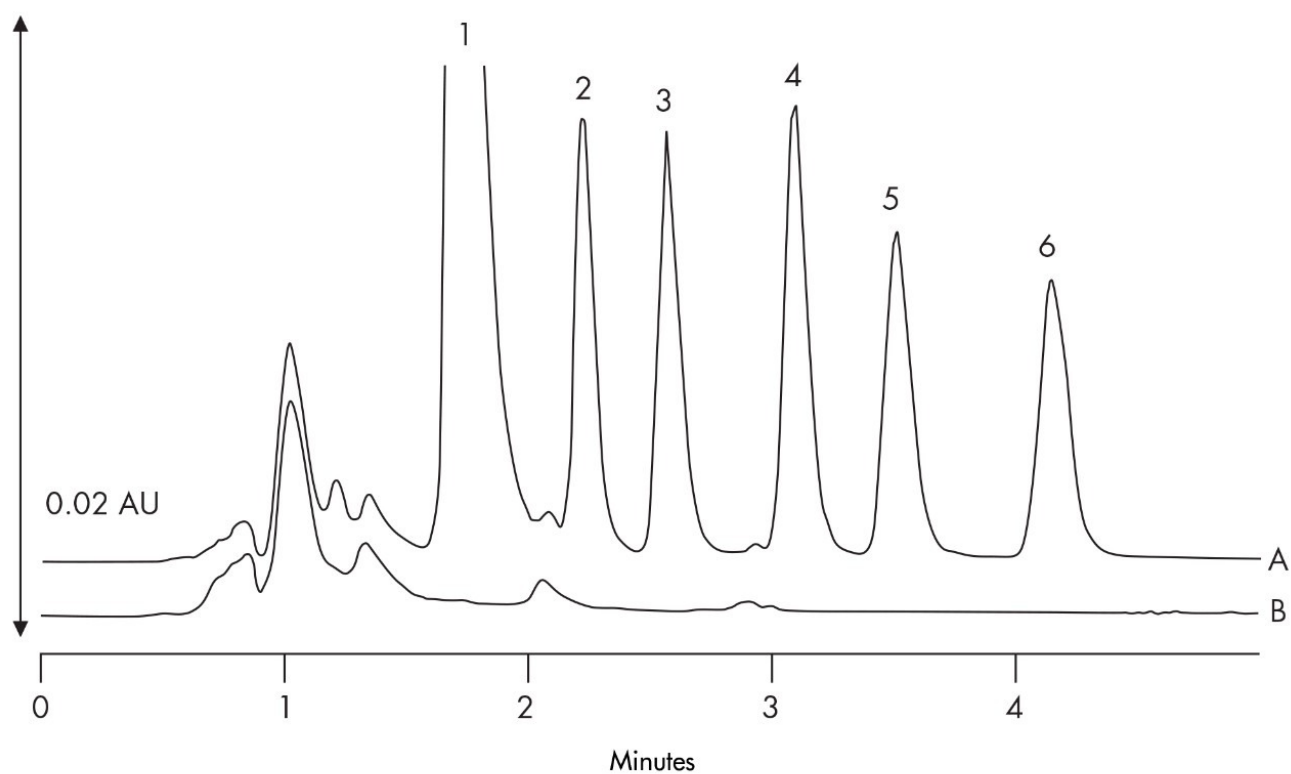
Oasis® HLB Extraction Plate, 30 mg/96-well  
Part Number WAT058951



## Results and Discussion

	500 ng/mL		100 ng/mL	
Compound	Recovery	RSD (n=96)	Recovery	%RSD (n=95)
Nortriptyline	92.3%	1.4%	90.8%	5.7%
Doxepin	90.6%	1.4%	90.4%	4.7%
Imipramine	92.2%	1.7%	86.4%	5.3%
Amitriptyline	90.2%	1.6%	85.3%	5.8%
Trimipramine	90.3%	1.9%	89.8%	6.1%

Chromatogram of Plasma Extracts: A) Blank B) Spiked Sample



## Featured Products

WA31763.175, June 2003



© 2021 Waters Corporation. All Rights Reserved.