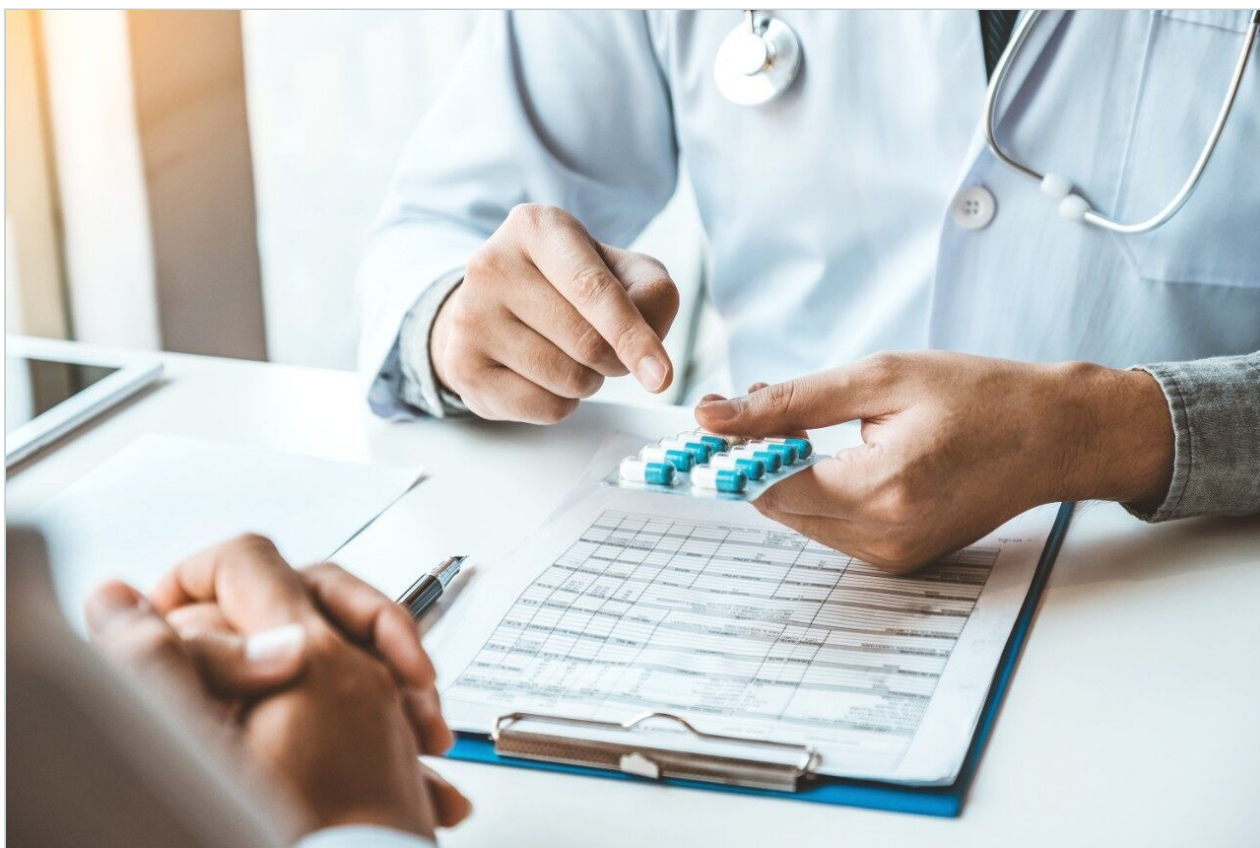


Tricyclic Antidepressants and Metabolites

Waters Corporation



This is an Application Brief and does not contain a detailed Experimental section.

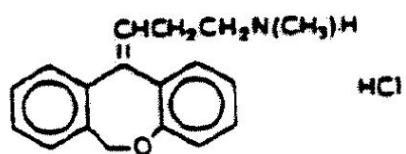
Abstract

This application brief demonstrates analysis of tricyclic antidepressants and metabolites.

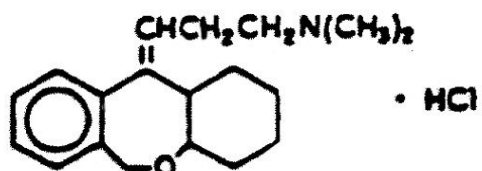
Introduction

The compounds used in this study are –

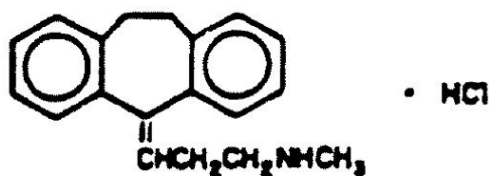
Compounds	USP Tailing Factors
Nordoxepin HCL	1.5
Doxepin HCL	1.5
Nortriptyline HCL	1.3
Amtriptyline HCL	1.2



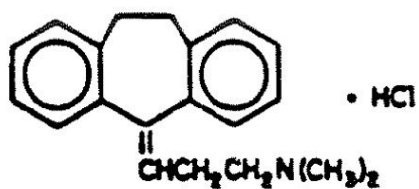
1. Nordoxepin HCL



2. Doxepin HCL



3. Nortriptyline HCL



4. Amtriptyline HCL

Experimental

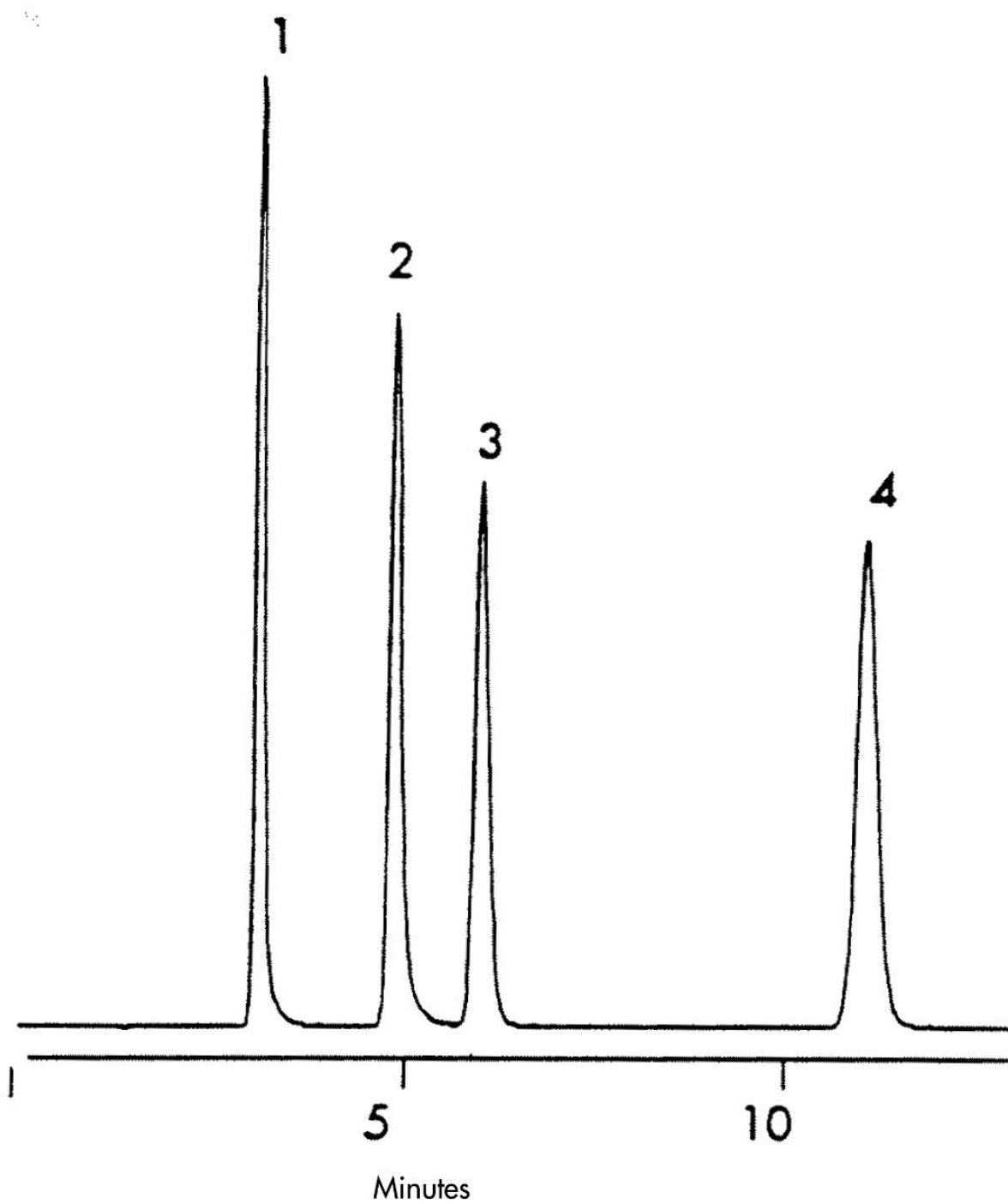
HPLC Method

Column:

Symmetry C₁₈, 3.9 x 150 mm, 5 μm

Part numbers:	WAT046980
Mobile phase:	20 mM potassium phosphate, pH 7.0/methanol 29:71
Flow rate:	1.0 mL/min
Injection volume:	5 µL of 1 to 1.16 mg/mL
Temperature:	35 °C
Detection:	UV @ 254 nm

Results and Discussion



Featured Products

WA31763.174, June 2003

© 2021 Waters Corporation. All Rights Reserved.