

Nota applicativa

Theophylline and Theobromine

Waters Corporation



This is an Application Brief and does not contain a detailed Experimental section.

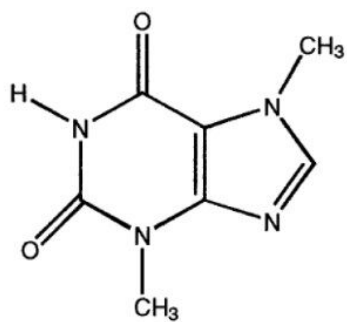
Abstract

This application brief highlights the analysis of theophylline and theobromine using Symmetry C₈ Columns.

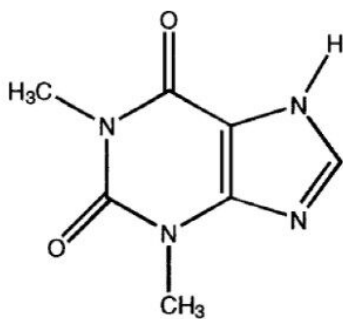
Introduction

The compounds analyzed in this study are:

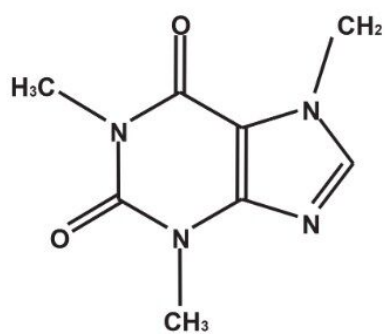
1. Theophylline
2. Theobromine
3. Caffeine



1. Theobromine



2. Theophylline



3. Caffeine

Experimental

HPLC Method

Column:	Symmetry C ₈ , 3.9 x 150 mm, 5 µm
Guard column:	Symmetry Guard Column 3.9 x 20mm, 5 µm
Part numbers:	Column - WAT046970, Guard - WAT054250
Mobile phase:	10 mM potassium phosphate, pH 7.0/ methanol 76:24
Flow rate:	1.0 mL/min
Injection volume:	20 µL of 10 µg/mL sample
Detection:	UV @ 280 nm

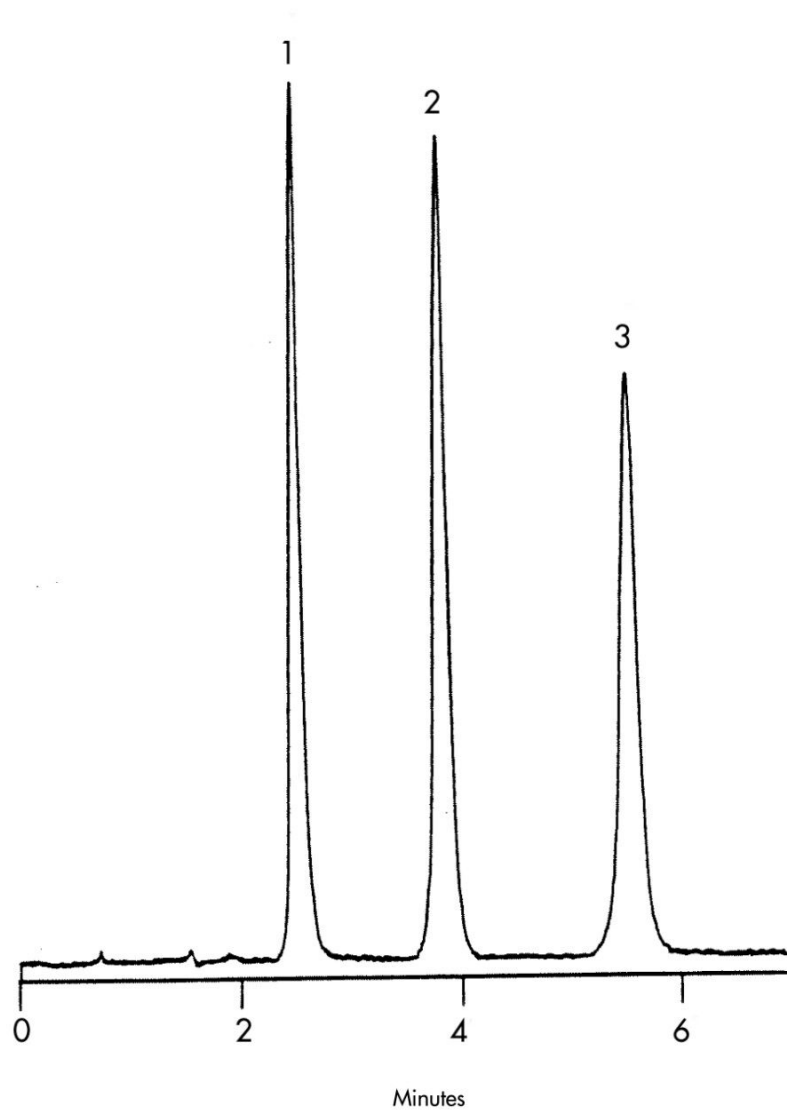
USP Tailing Factors

1. 1.18

2. 1.03

3. 1.01

Results and Discussion



Featured Products

WA31763.170, June 2003

