

## Theophylline and Theobromine

---

Waters Corporation



This is an Application Brief and does not contain a detailed Experimental section.

---

### Abstract

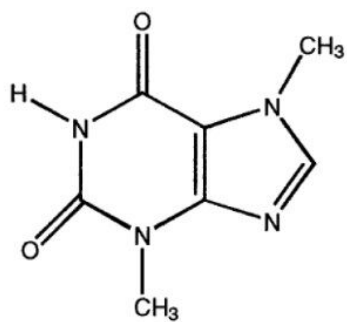
This application brief highlights the analysis of theophylline and theobromine using Symmetry C<sub>8</sub> Columns.

---

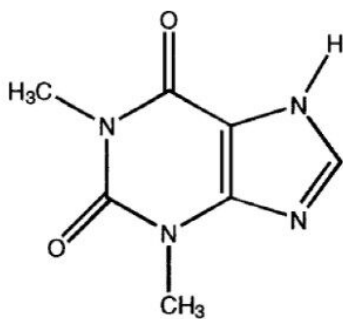
## Introduction

The compounds analyzed in this study are:

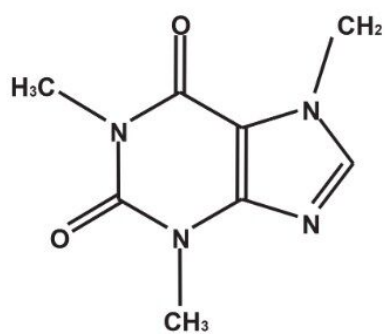
1. Theophylline
2. Theobromine
3. Caffeine



### 1. Theobromine



### 2. Theophylline



### 3. Caffeine

---

Experimental

## HPLC Method

|                   |  |
|-------------------|--|
| Column:           | Symmetry C <sub>8</sub> , 3.9 x 150 mm, 5 µm         |
| Guard column:     | Symmetry Guard Column 3.9 x 20mm, 5 µm               |
| Part numbers:     | Column - WAT046970, Guard - WAT054250                |
| Mobile phase:     | 10 mM potassium phosphate, pH 7.0/ methanol<br>76:24 |
| Flow rate:        | 1.0 mL/min   |
| Injection volume: | 20 µL of 10 µg/mL sample                             |
| Detection:        | UV @ 280 nm  |

## USP Tailing Factors

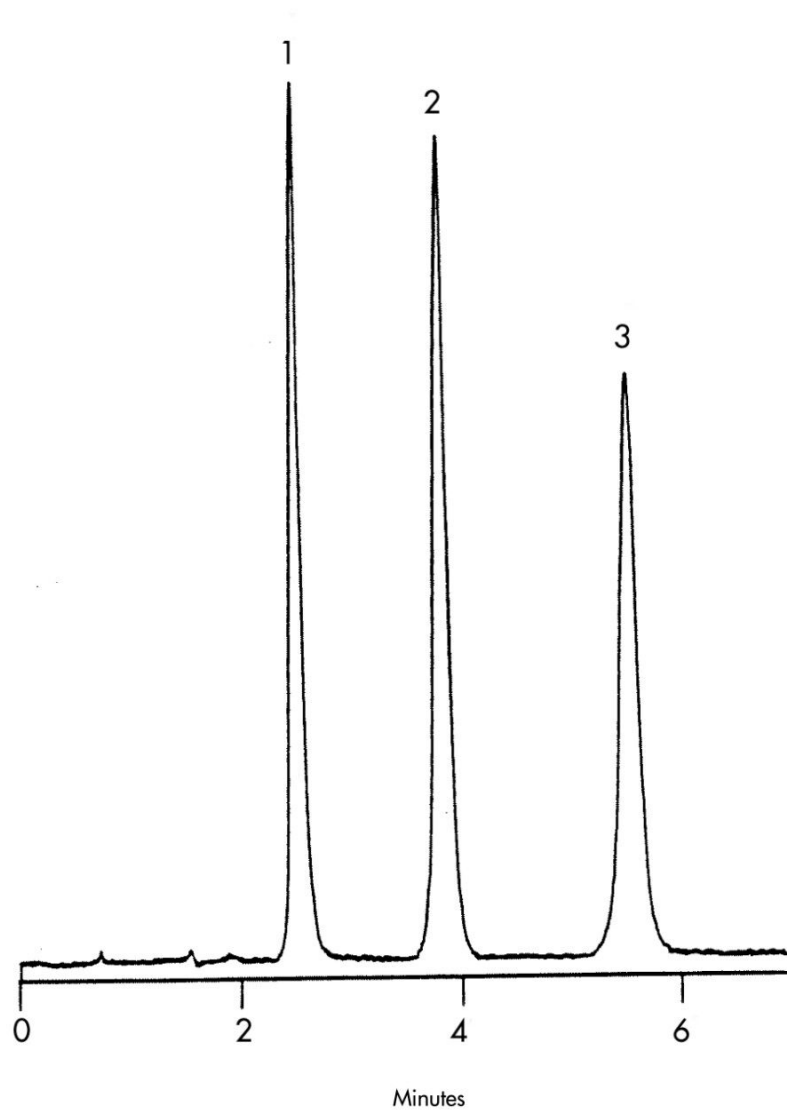
1. 1.18

2. 1.03

3. 1.01

---

## Results and Discussion



---

## Featured Products

WA31763.170, June 2003

