

응용 자료

Terfenadine and Related Compound

Waters Corporation



This is an Application Brief and does not contain a detailed Experimental section.

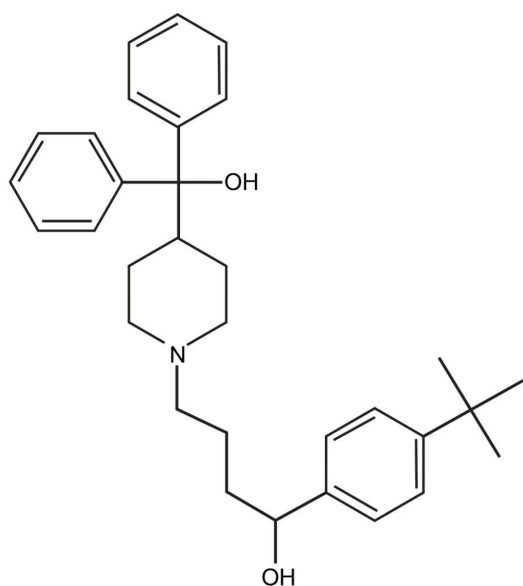
Abstract

This application brief highlights the analysis of Terfenadine and related compounds using Symmetry C₈ Columns.

Introduction

The compounds analyzed in this study are:

1. Terfenadine
2. Terfenadine Related Compound ARS



1. Terfenadine

Experimental

HPLC Method

Column:

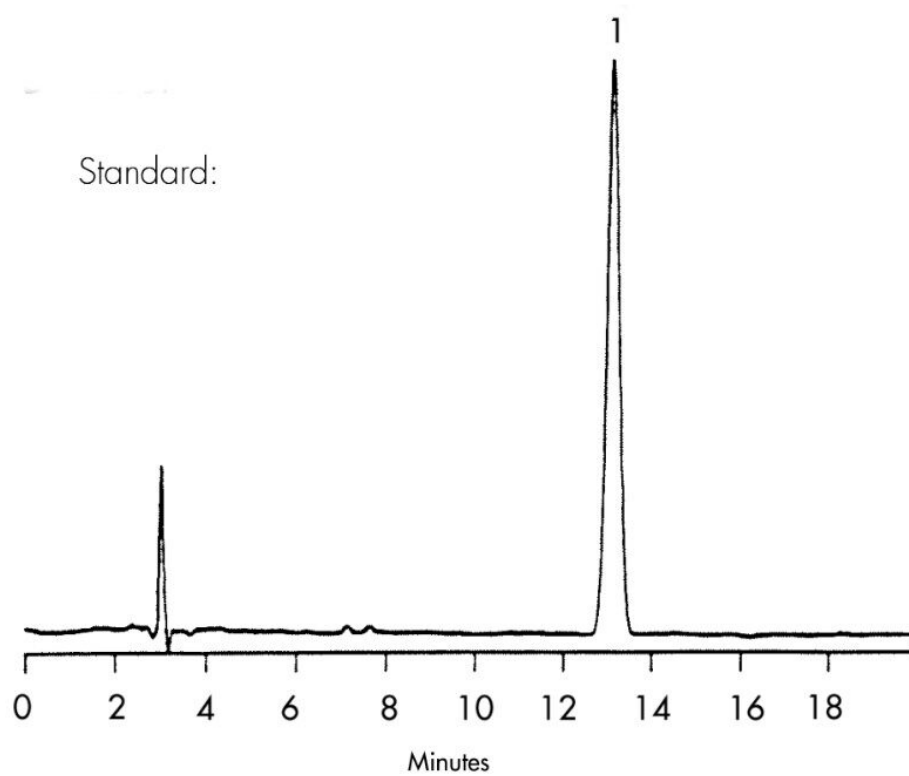
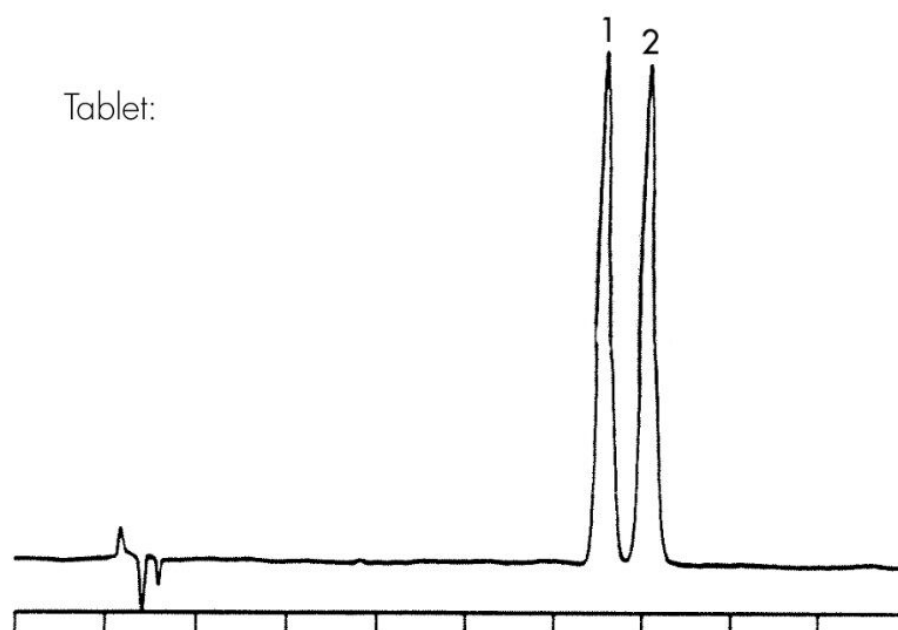
Symmetry C₈, 4.6 x 250 mm, 5 μm

Part number:

WAT054270

Mobile phase:	100 mM triethylammonium phosphate, pH 7.0/methanol 20:80
Flow rate:	1.0 mL/min
Injection volume:	A. 15 µL of mixture with 0.6 mg/mL terfenadine and 0.15 mg/mL of terfenadine related compound ARS B. 15 µL of 8mg/mL crushed tablet (equivalent to 0.6mg/mL terfenadine)
Detection:	UV @ 235 nm
USP Tailing Factor	
1. 1.0	

Results and Discussion



Featured Products

WA31763.165, June 2003

© 2021 Waters Corporation. All Rights Reserved.