

Tamoxifen

Waters Corporation



This is an Application Brief and does not contain a detailed Experimental section.

Abstract

This application brief highlights the analysis of Tamoxifen using Symmetry Columns.

Introduction

Tamoxifen Citrate is studied in this application brief.



1. Tamoxifen Citrate

Experimental

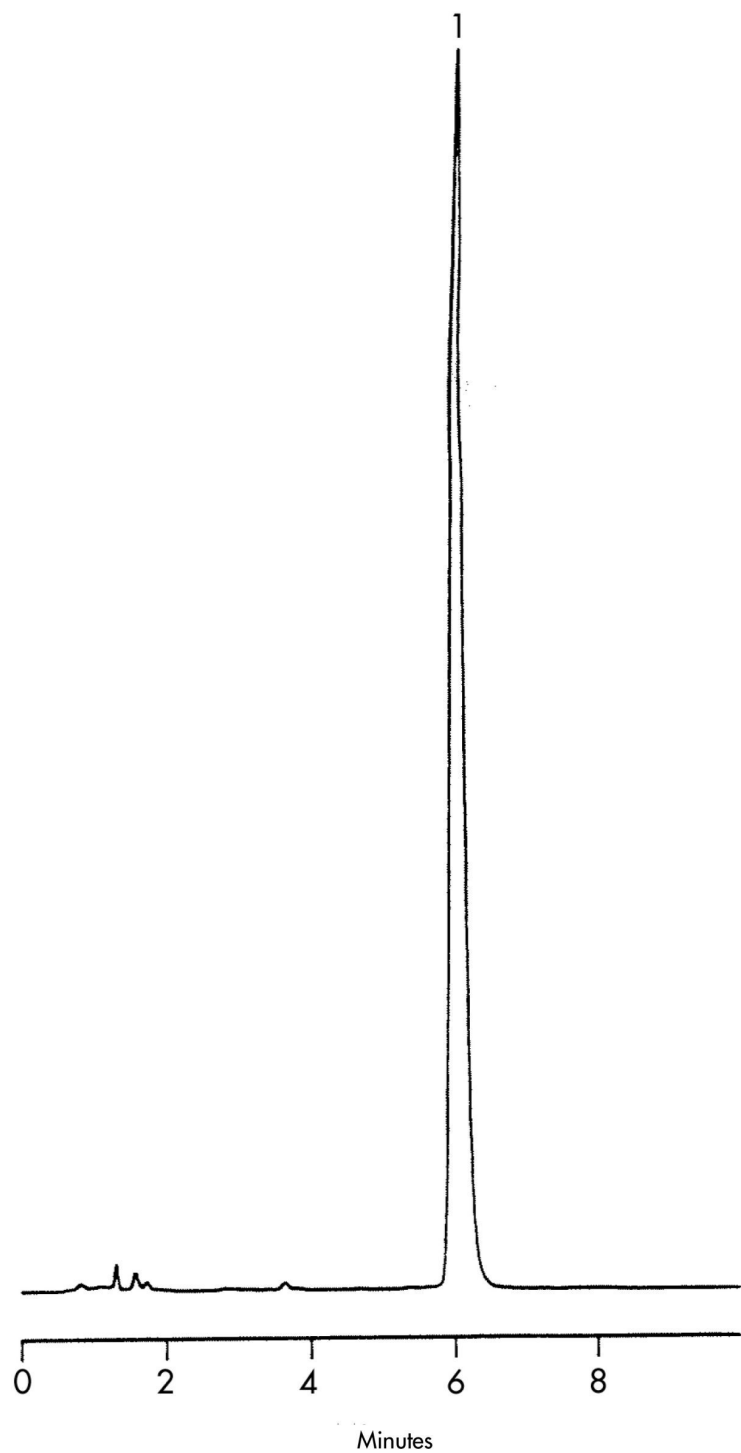
HPLC Method

Column:	Symmetry C ₈ , 3.9 x 150 mm, 5 μm (p/n:WAT046970)
Mobile phase:	50 mM potassium phosphate, pH 3/acetonitrile 55:45
Flow rate:	1.0 mL/min
Injection volume:	5 μL of 100 μg/mL
Detection:	UV @ 254 nm

USP Tailing Factors

1. 1.3

Results and Discussion



Featured Products

WA31763.162, June 2003



© 2021 Waters Corporation. All Rights Reserved.