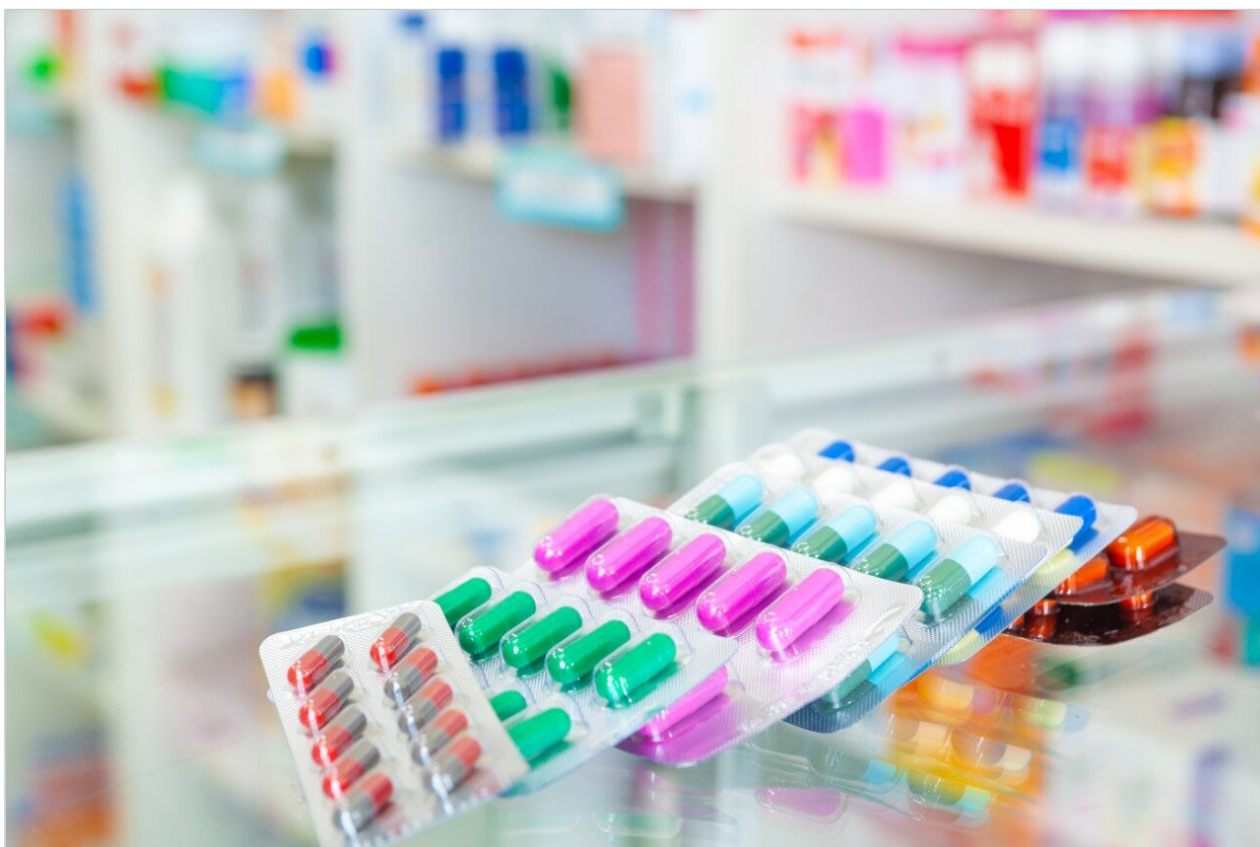


Synthetic Antibiotics

Waters Corporation



This is an Application Brief and does not contain a detailed Experimental section.

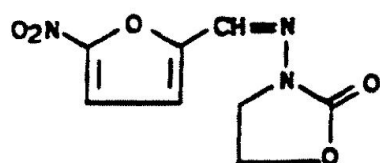
Abstract

This application brief highlights the analysis of synthetic antibiotics using Symmetry Columns.

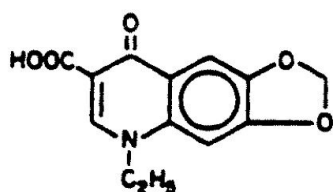
Introduction

Synthetic antibiotics used in this study are:

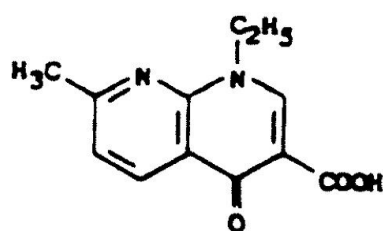
1. Furazolidone
2. Oxolinic Acid
3. Nalidixic Acid



1. Furazolidone



2. Oxolinic Acid



3. Nalidixic Acid

Experimental

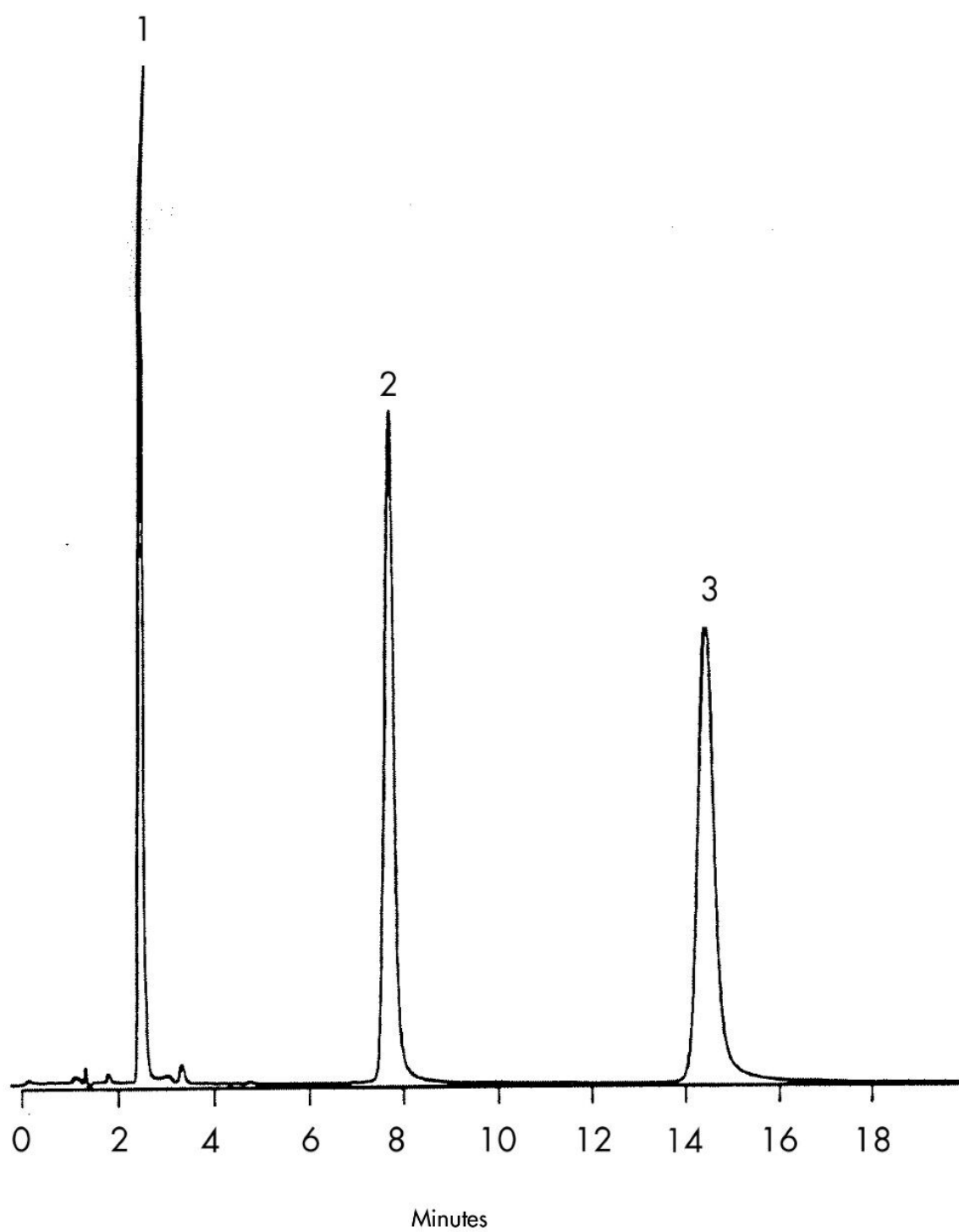
HPLC Method

Column:	Symmetry C ₁₈ , 3.9 x 150 mm, 5 µm (p/n:WAT046980)
Mobile phase:	0.1% phosphoric acid in water/methanol 62:38
Flow rate:	1.0 mL/min
Injection volume:	10 µL of mixture with 30 µg/mL furazolidone and oxolinic acid and 100 µg/mL nolidixic acid
Detection:	UV @ 254 nm

USP Tailing Factors

1. 1.2
2. 1.1
3. 1.2

Results and Discussion



Featured Products

WA31763.161, June 2003

© 2021 Waters Corporation. All Rights Reserved.