

## Symmetry C<sub>18</sub> pH 3 Batch Test

---

Waters Corporation



This is an Application Brief and does not contain a detailed Experimental section.

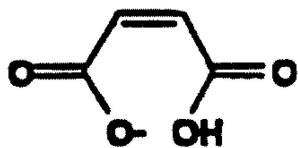
### Abstract

This application brief highlights the batch test analysis using Symmetry C<sub>18</sub> Columns.

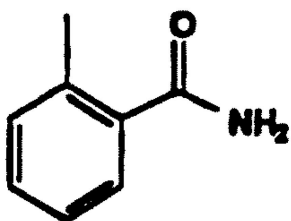
## Introduction

Compounds used in this study are:

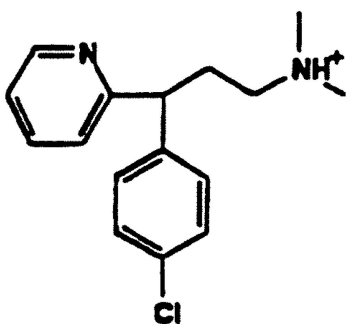
1. Maleate
2. Toluamide
3. Chlorpheniramine
4. Propranolol



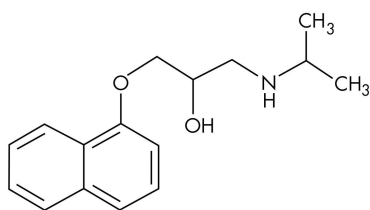
1. Maleate



2. Toluamide



3. Chlorpheniramine



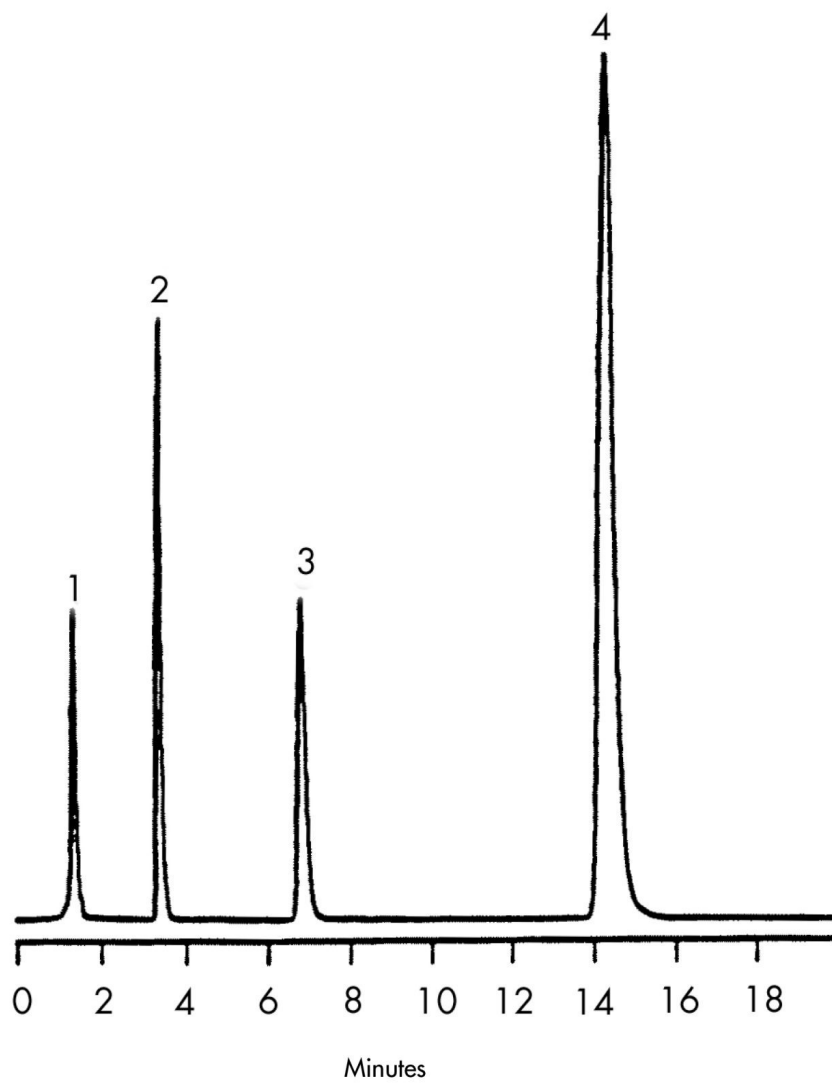
4. Propranolol

Experimental

HPLC Method

Column:	Symmetry C <sub>18</sub> , 3.9 x 150 mm, 5 µm (p/n:WAT04698)
Mobile phase:	50 mM potassium phosphate pH 3.0/acetonitrile 80
Flow rate:	1.0 mL/min
Injection volume:	20 µL of mixture with chlorpheniramine, maleate, toluamide and propranolol
Detection:	UV @ 230 nm

## Results and Discussion



## Featured Products

WA31763.160, June 2003



© 2021 Waters Corporation. All Rights Reserved.