

응용 자료

## Symmetry C<sub>18</sub> pH 3 Batch Test

---

Waters Corporation



This is an Application Brief and does not contain a detailed Experimental section.

---

### Abstract

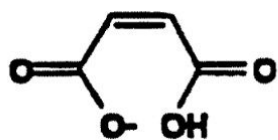
This application brief highlights the batch test analysis using Symmetry C<sub>18</sub> Columns.

---

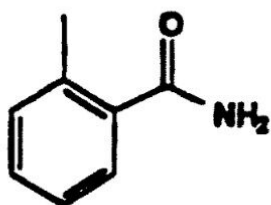
## Introduction

Compounds used in this study are:

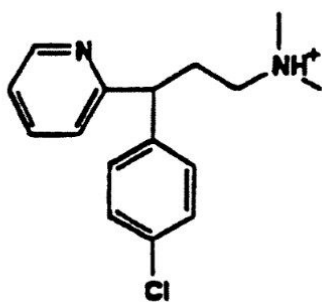
1. Maleate
2. Toluamide
3. Chlorpheniramine
4. Propranolol



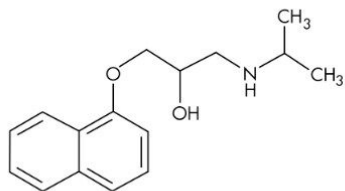
1. Maleate



2. Toluamide



3. Chlorpheniramine



4. Propranolol

---

## Experimental

### HPLC Method

Column:

Symmetry C<sub>18</sub>, 3.9 x 150 mm, 5 μm

(p/n:WAT046980)

Mobile phase: 50 mM potassium phosphate pH 3.0/acetonitrile  
80:20

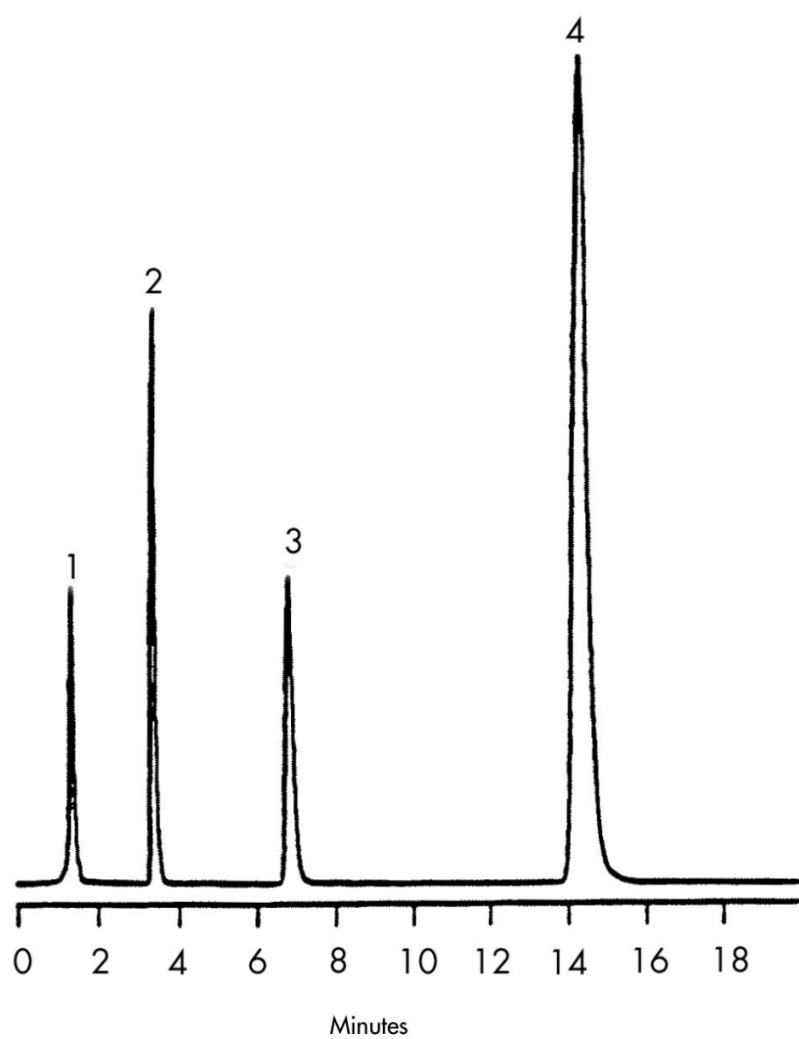
Flow rate: 1.0 mL/min

Injection volume: 20  $\mu$ L of mixture with chlorpheniramine, maleate,  
toluamide and propranolol

Detection: UV @ 230 nm

---

## Results and Discussion



---

## Featured Products

WA31763.160, June 2003

