

Symmetry C₁₈ pH 3 Batch Test

Waters Corporation



This is an Application Brief and does not contain a detailed Experimental section.

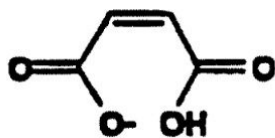
Abstract

This application brief highlights the batch test analysis using Symmetry C₁₈ Columns.

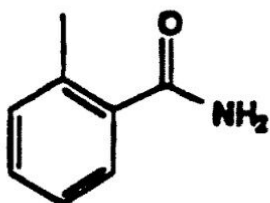
Introduction

Compounds used in this study are:

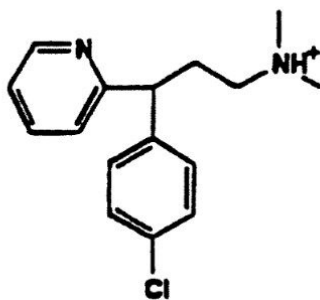
1. Maleate
2. Toluamide
3. Chlorpheniramine
4. Propranolol



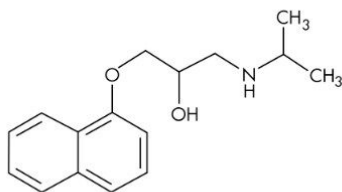
1. Maleate



2. Toluamide



3. Chlorpheniramine



4. Propranolol

Experimental

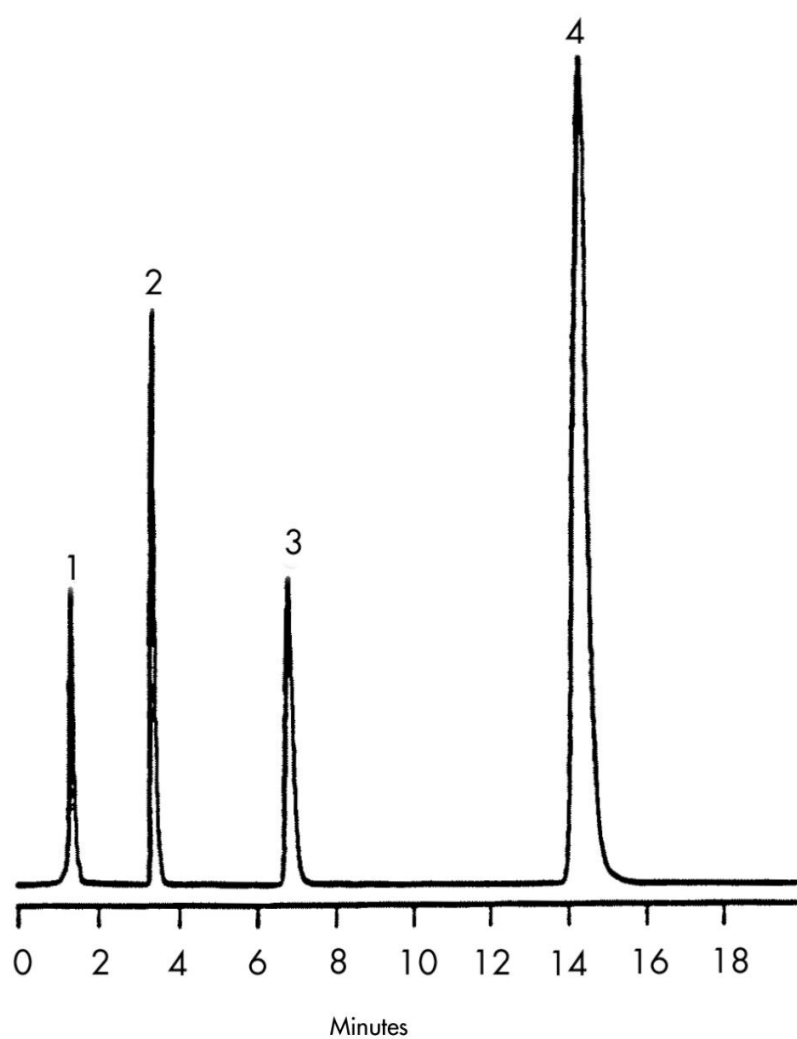
HPLC Method

Column:

Symmetry C₁₈, 3.9 x 150 mm, 5 μm
(p/n:WAT046980)

Mobile phase:	50 mM potassium phosphate pH 3.0/acetonitrile 80:20
Flow rate:	1.0 mL/min
Injection volume:	20 µL of mixture with chlorpheniramine, maleate, toluamide and propranolol
Detection:	UV @ 230 nm

Results and Discussion



Featured Products

WA31763.160, June 2003

