

Nota applicativa

## Sulfamethoxazole and Trimethoprim

---

Waters Corporation



This is an Application Brief and does not contain a detailed Experimental section.

---

### Abstract

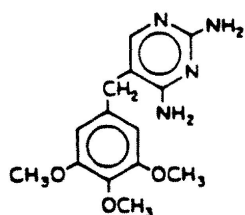
This application brief highlights the analysis of Sulfamethoxazole and Trimethoprim using Symmetry Columns.

---

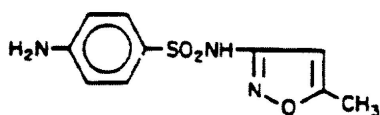
## Introduction

Compounds used in this study are:

1. Trimethoprim
2. Sulfamethoxazole



1. Trimethoprim



2. Sulfamethoxazole

---

## Experimental

### HPLC Method

Column:	Symmetry C <sub>18</sub> , 3.9 x 20 mm, 5 µm IS (p/n: WAT046980)
Mobile phase:	Water/methanol/glacial acetic acid 79:20:1
Flow rate:	1.0 mL/min
Injection volume:	10 µL of 100 µg/mL sulfamethoxazole and 30 µg/mL trimethoprim

Detection:

UV @ 254 nm

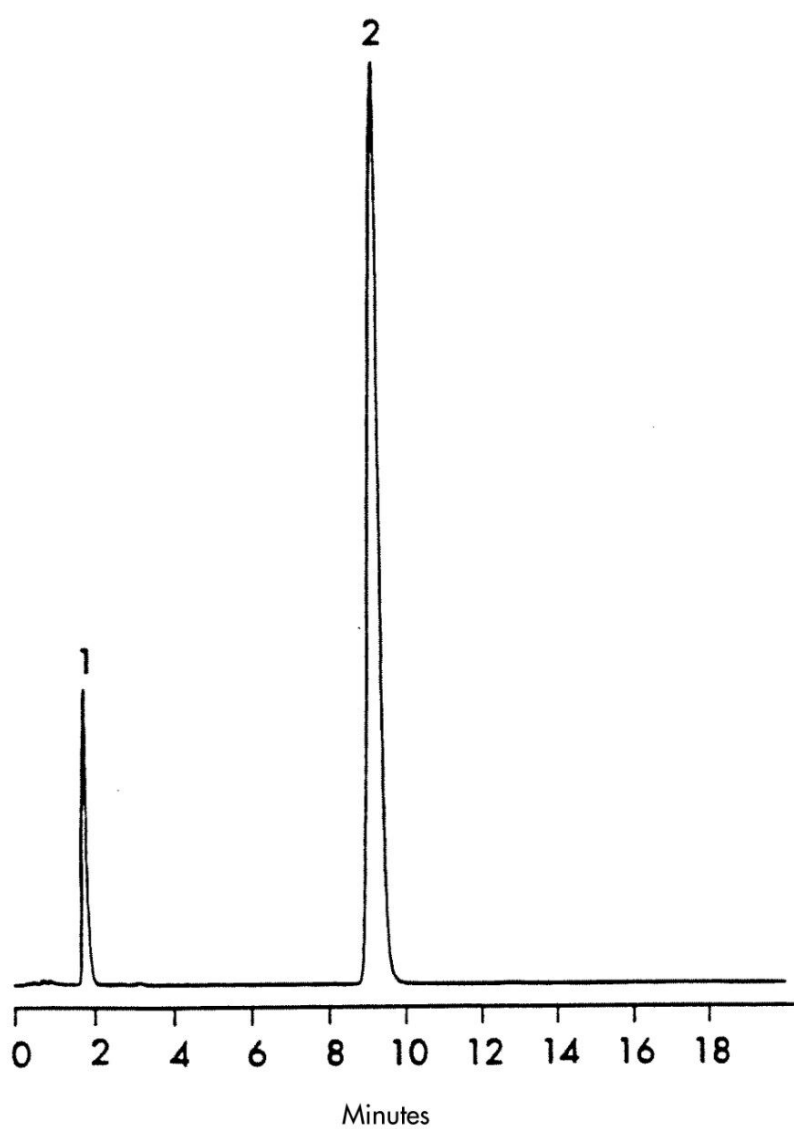
## USP Tailing Factors

1. 1.5

2. 1.1

---

## Results and Discussion



---

## Featured Products

WA31763.158, June 2003

