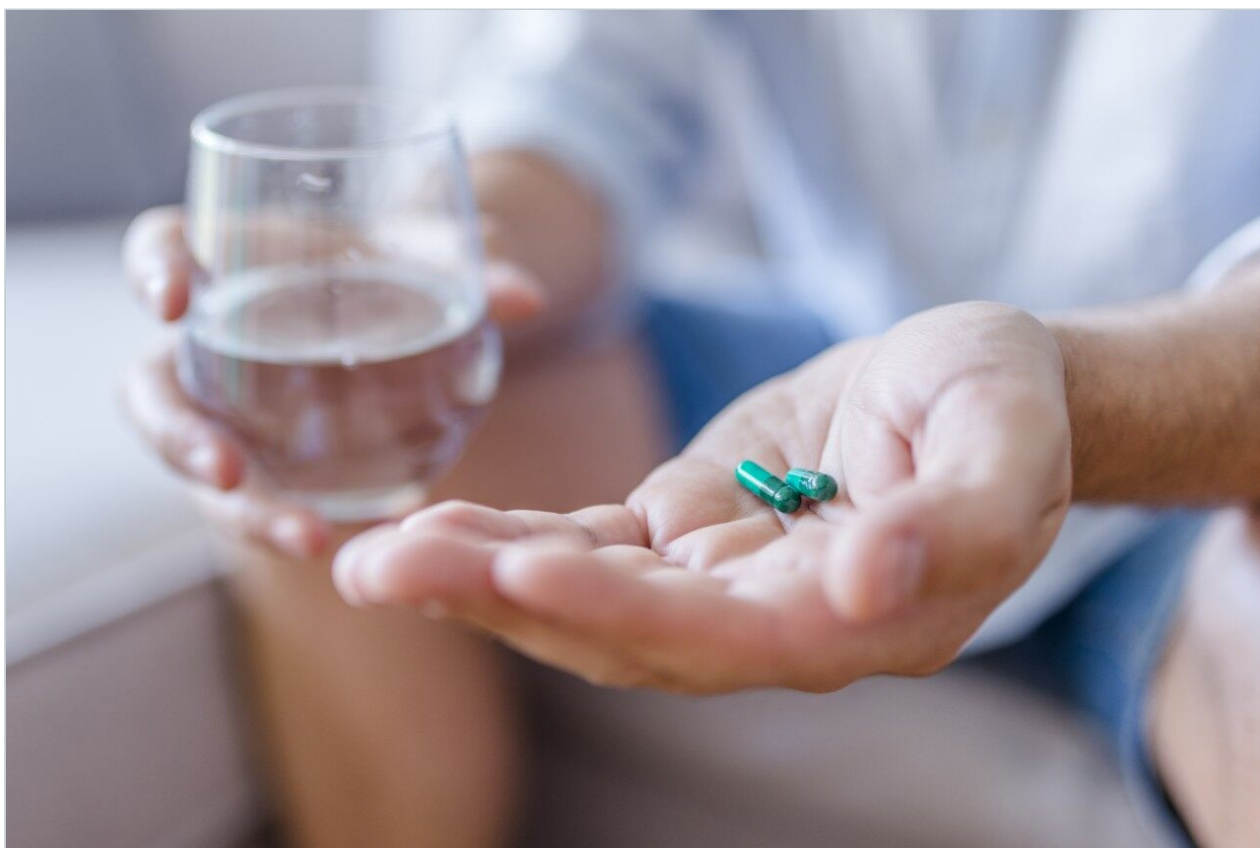


Sulfa Drugs in Serum

Waters Corporation



This is an Application Brief and does not contain a detailed Experimental section.

Abstract

This application brief highlights the analysis of sulfa drugs in serum using Symmetry columns.

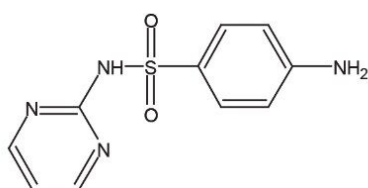
Introduction

Compounds used in this study are:

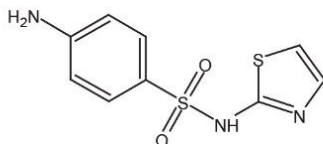
1: Sulfadiazine

2: Sulfathiazole (I.S.)

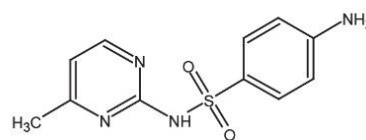
3. Sulfamerazine



1. Sulfadiazine



2. Sulfathiazole (I.S.)



3. Sulfamerazine

Experimental

HPLC Method

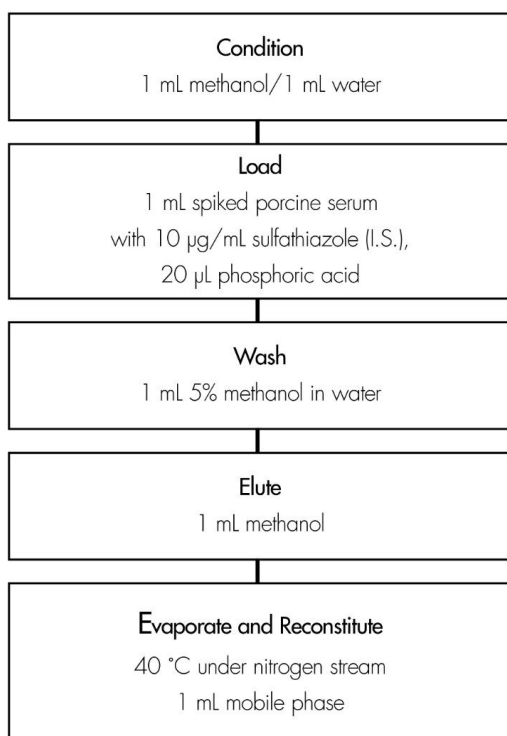
Column:	Symmetry C ₁₈ , 3.9 x 150 mm, 5 µm (p/n: WAT046980)
Mobile phase:	1% glacial acetic acid and 4% methanol in water
Flow rate:	1.0 mL/min
Injection volume:	10 µL of reconstituted porcine serum extract
Temperature:	25° C

Detection:

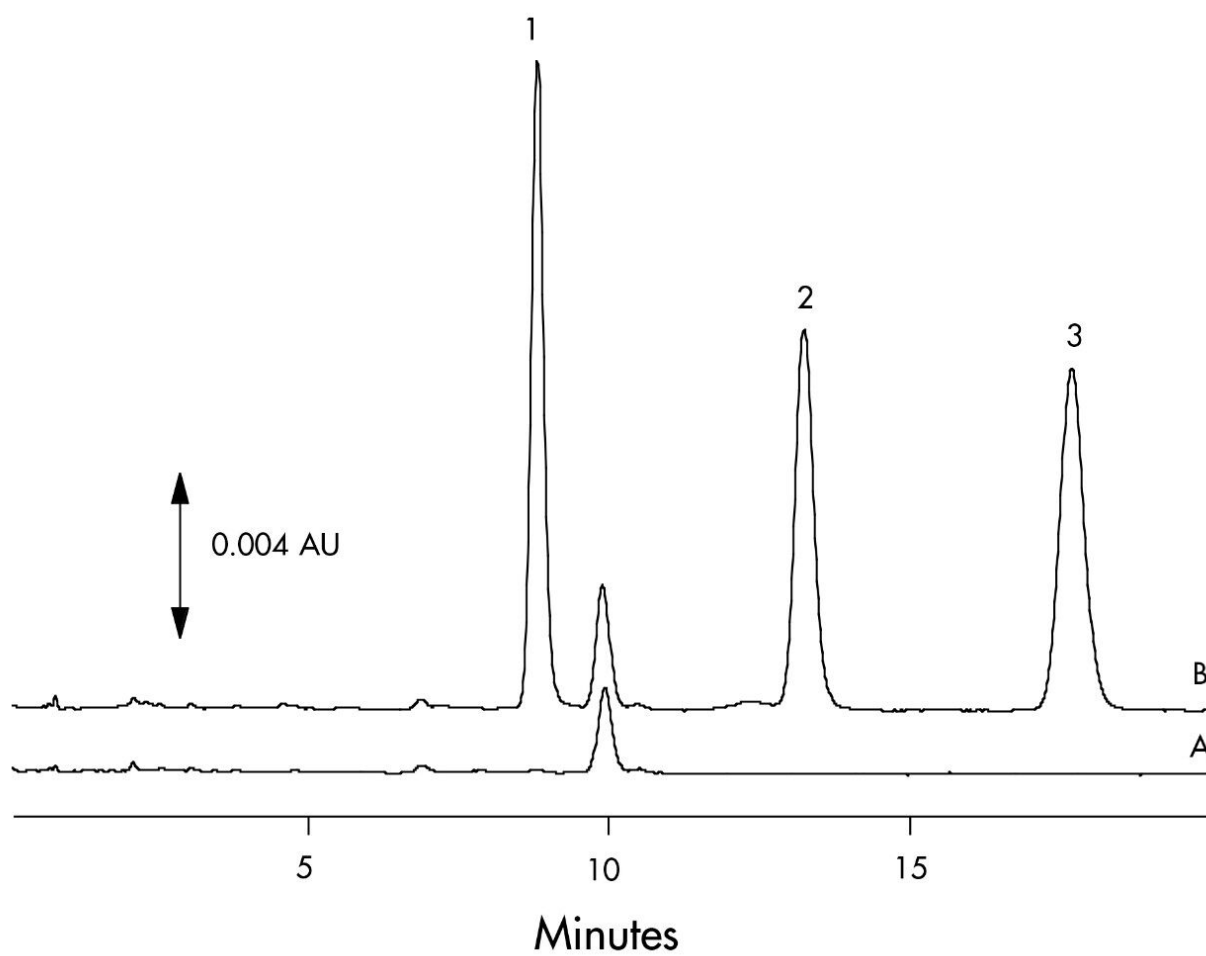
UV @ 254 nm

Oasis® HLB Extraction Method

Oasis® HLB 1 cc/30 mg Extraction Cartridge
Part Number WAT094225



Results and Discussion



Compound	Concentration µg/mL	% Recovery	%RSD (n=6)
Sulfadiazine	2.00	98.4%	2.7%
	10.0	96.9%	0.65%
Sulfamerazine	2.00	93.5%	1.9%
	10.0	96.4%	0.74%

Featured Products

WA31763.155, June 2003

© 2021 Waters Corporation. All Rights Reserved.