

Nota applicativa

## Pseudoephedrine HCL and Triprolidine HCL

---

Waters Corporation



This is an Application Brief and does not contain a detailed Experimental section.

---

### Abstract

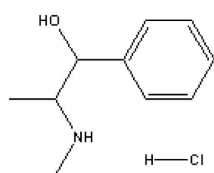
This application brief highlights the analysis of Pseudoephedrine HCL and Triprolidine HCL using Symmetry Columns.

---

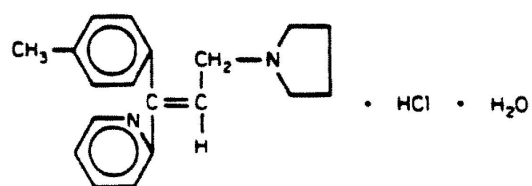
## Introduction

The compounds analyzed in this study are:

1. Pseudoephedrine HCL
2. Triprolidine HCL



**1. Pseudoephedrine HCL**



**2. Triprolidine HCL**

---

## Experimental

### HPLC Method

Column:

Symmetry C<sub>8</sub>, 3.9 x 150 mm, 5 μm

Guard column: Symmetry Guard Column 3.9 x 20 mm, 5  $\mu$ m

Part numbers: Column - WAT046970, Guard - WAT054250

Mobile phase A: 50 mM potassium phosphate, pH 3.0

Mobile phase B: Acetonitrile

Flow rate: 1.0 mL/min

Injection volume: 5  $\mu$ L of 2.88  $\mu$ g/mL pseudoephedrine and 120  $\mu$ g/mL triprolidine extracted tablet sample

Detection: UV @ 261 nm

#### Gradient Table

Time (min)	Profile	
	%A	%B
0	85	15
1	85	15
15	50	50

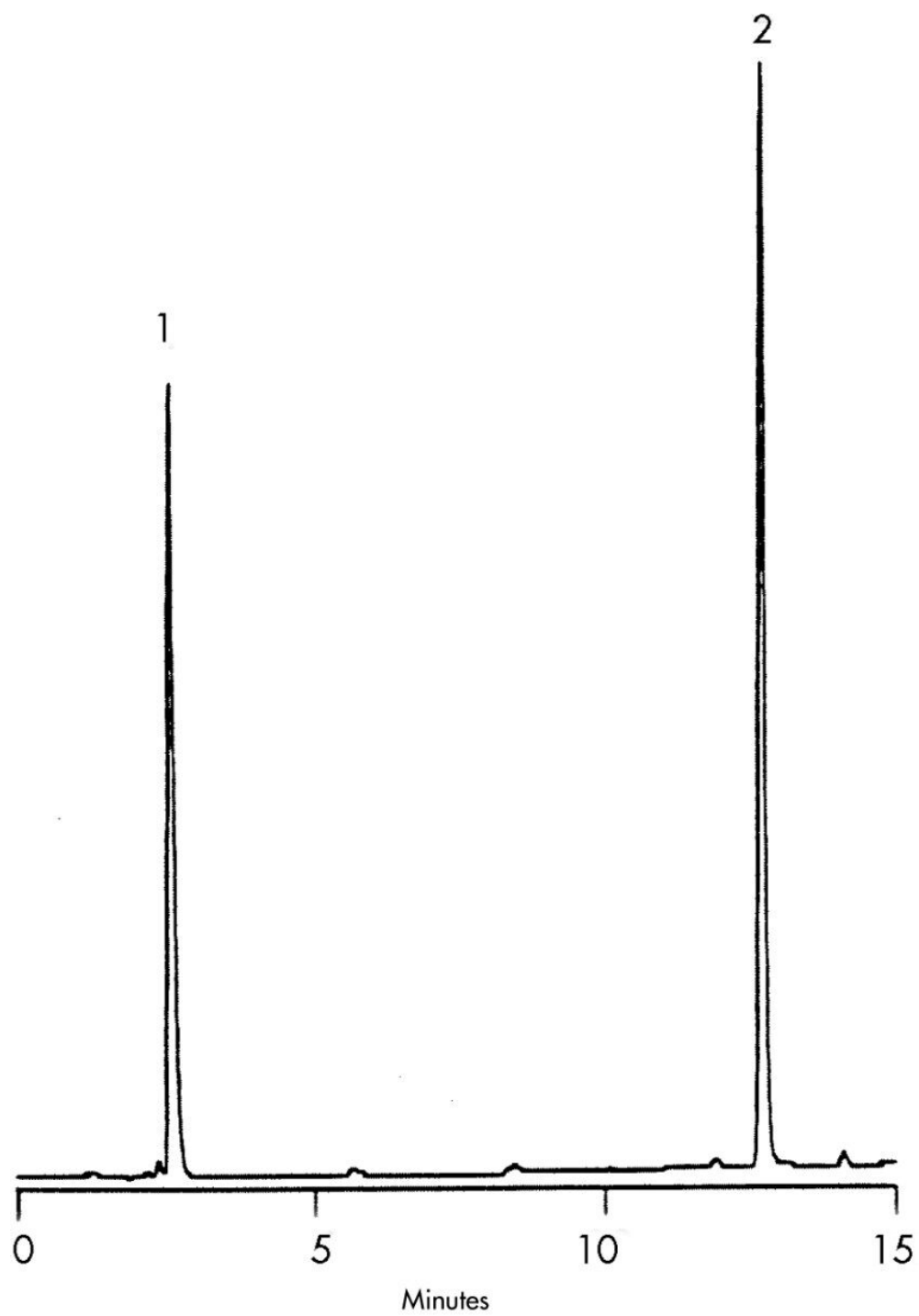
#### USP Tailing Factors

1. 1.53

2. 1.16

---

## Results and Discussion



---

## Featured Products

WA31763.138, June 2003

© 2021 Waters Corporation. All Rights Reserved.