

Profens (Gradient) - 4.6 x 20 mm Intelligent Speed Separation

Waters Corporation



This is an Application Brief and does not contain a detailed Experimental section.

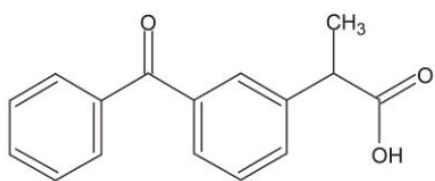
Abstract

This application brief highlights the Intelligent Speed separation of profens using Symmetry and SymmetryShield columns.

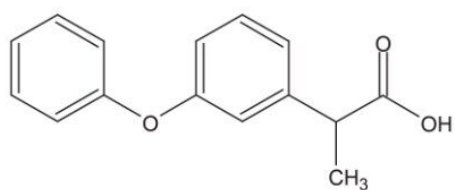
Introduction

Compounds used in this application brief are:

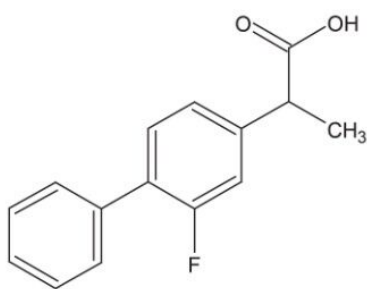
1. Ketoprofen
2. Fenoprofen
3. Flurbiprofen
4. Ibuprofen



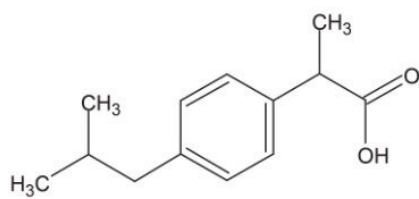
1. Ketoprofen



2. Fenoprofen



3. Flurbiprofen



4. Ibuprofen

Experimental

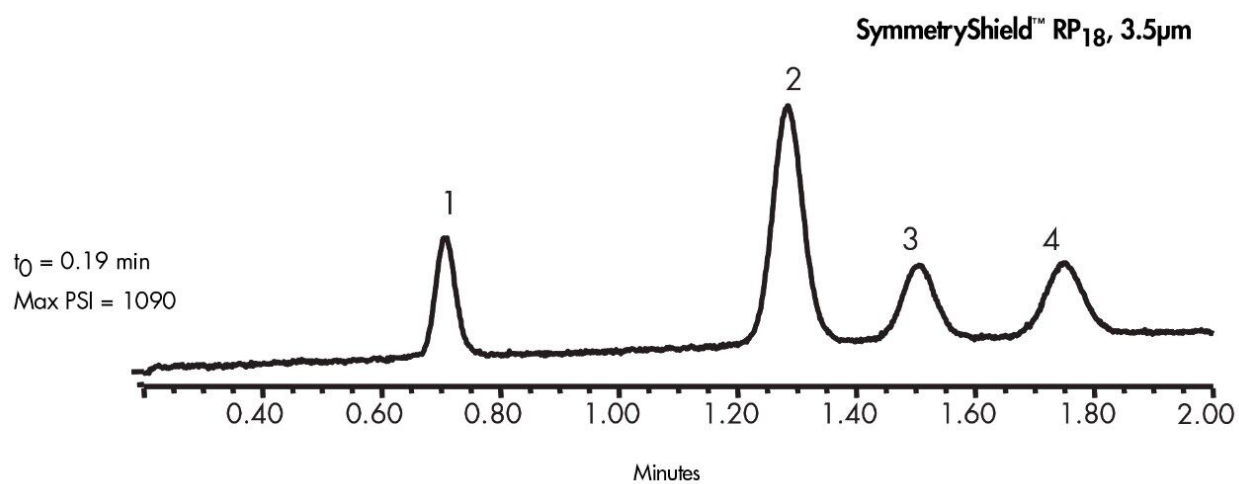
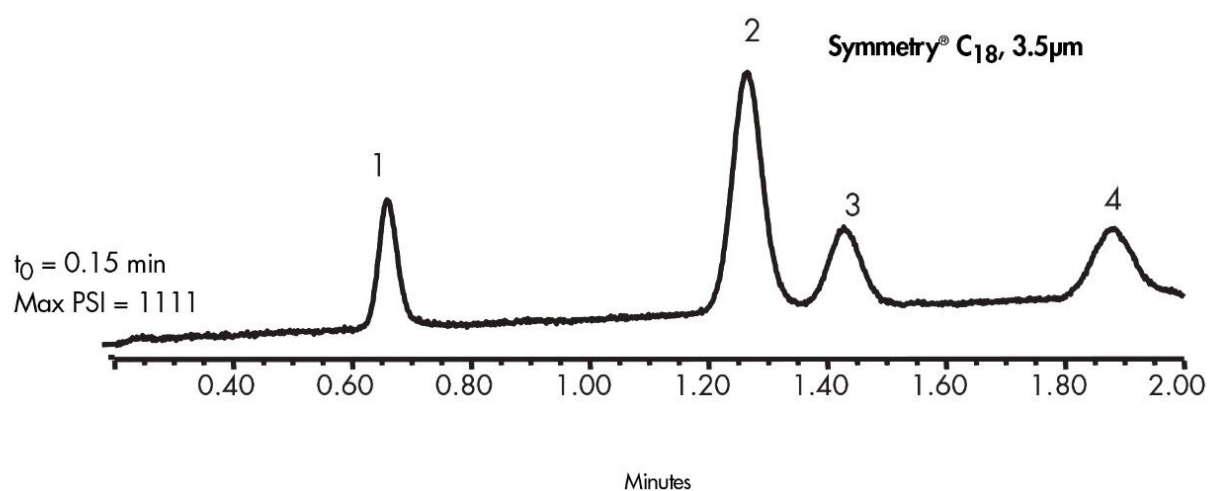
HPLC Method

Column:	Symmetry C ₁₈ , 4.6 x 20 mm, 3.5 µm IS (p/n: 186002090) SymmetryShield RP ₁₈ , 4.6 x 20 mm, 3.5 µm IS (p/n: 186002092)
Mobile phase A:	0.1% HCOOH in Water
Mobile phase B:	0.1% HCOOH in CAN
Flow rate:	3.0 mL/min
Injection volume:	10 µL
Detection:	UV @ 220 nm

Gradient

Time (min)	Profile	
	%A	%B
0	65	35
2	60	40

Results and Discussion



Featured Products

WA31763.131, June 2003

