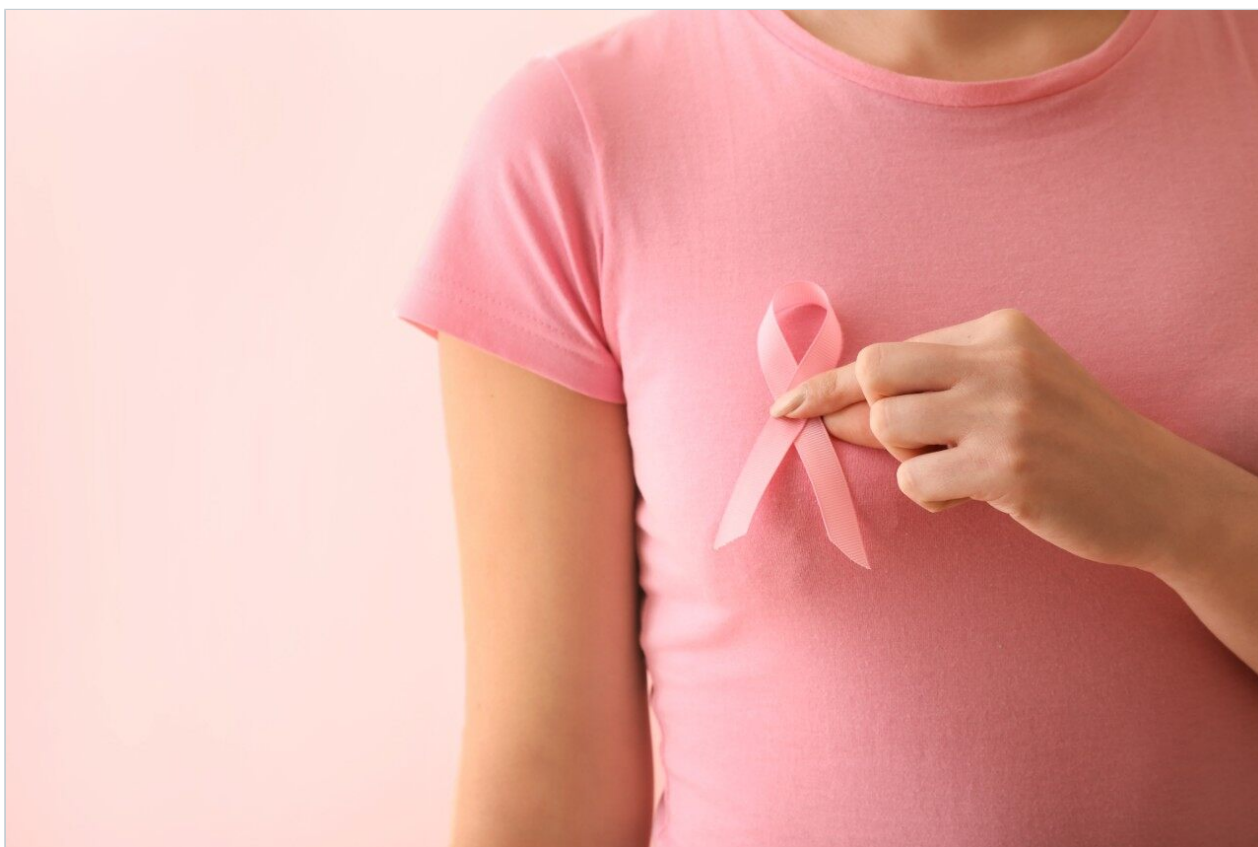


Paclitaxel (Taxol)

Waters Corporation



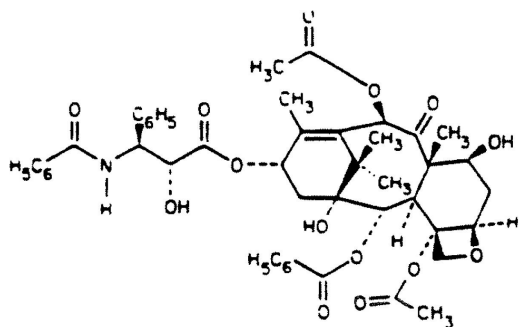
This is an Application Brief and does not contain a detailed Experimental section.

Abstract

This application brief highlights the analysis of paclitaxel using Symmetry C₈.

Introduction

This application brief highlights the analysis of paclitaxel using Symmetry C₈.



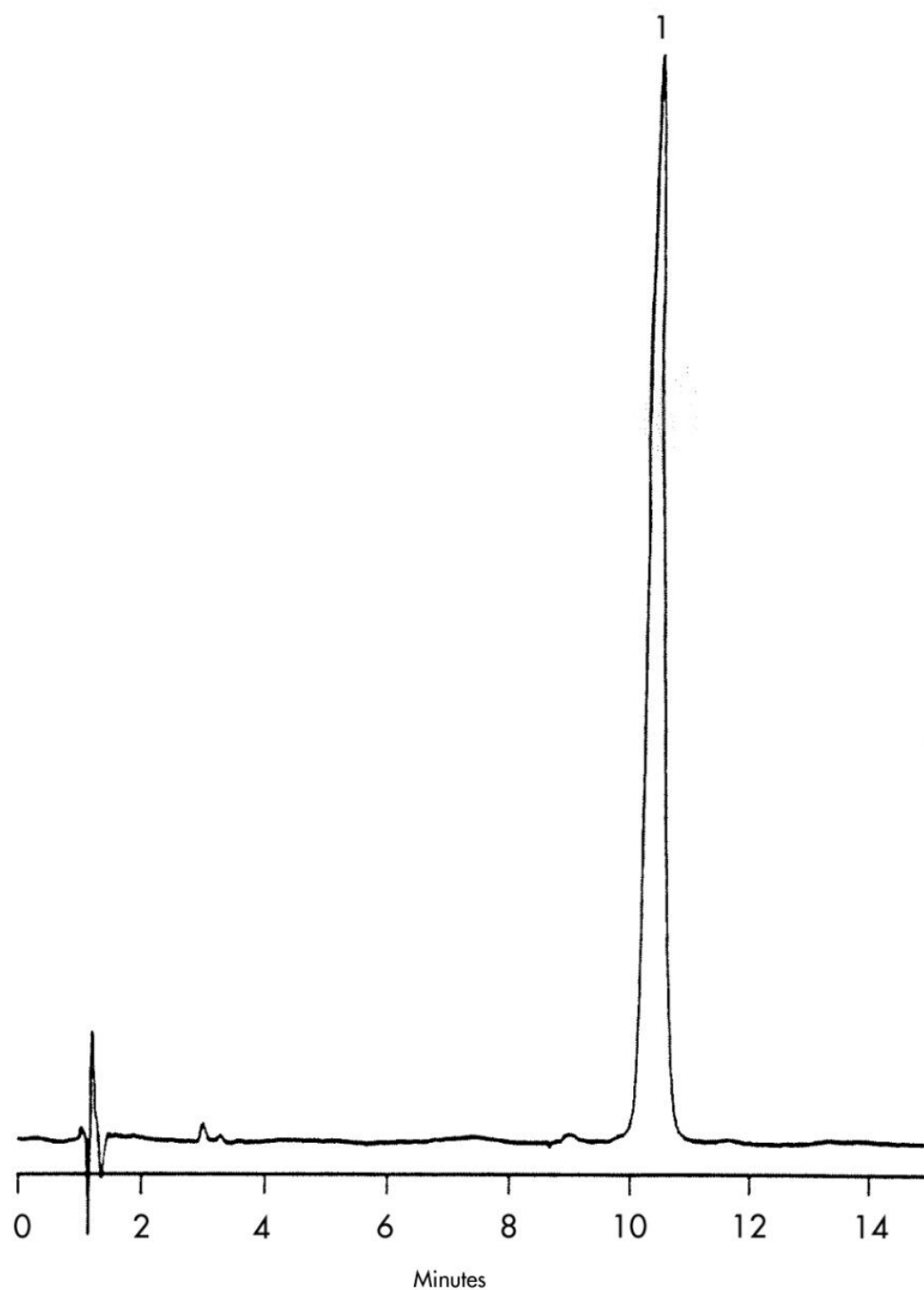
1. Paclitaxel (Taxol)

Experimental

HPLC Method

Column:	Symmetry C ₈ , 3.9 x 150 mm, 5 µm (p/n: WAT046980)
Mobile phase:	20 mM ammonium acetate, pH 5.0/acetonitrile/methanol 50:40:10
Flow rate:	1.0 mL/min
Injection volume:	5 µL of 100 µg/mL
Detection:	UV @ 227 nm
USP tailing factor:	1. 1.0

Results and Discussion



Featured Products

WA31763.116, June 2003

© 2021 Waters Corporation. All Rights Reserved.