

Note d'application

## Naltrexone in Serum

---

Waters Corporation



This is an Application Brief and does not contain a detailed Experimental section.

---

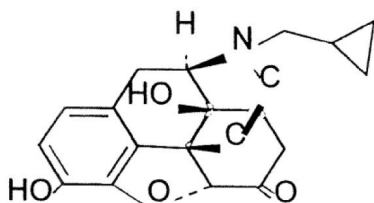
### Abstract

This application brief highlights the analysis of naltrexone in serum.

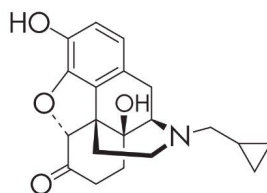
---

## Introduction

Compounds used in this application brief includes naloxone (I.S.), and naltrexone.



**1. Naloxone (I.S.)**



**2. Naltrexone**

---

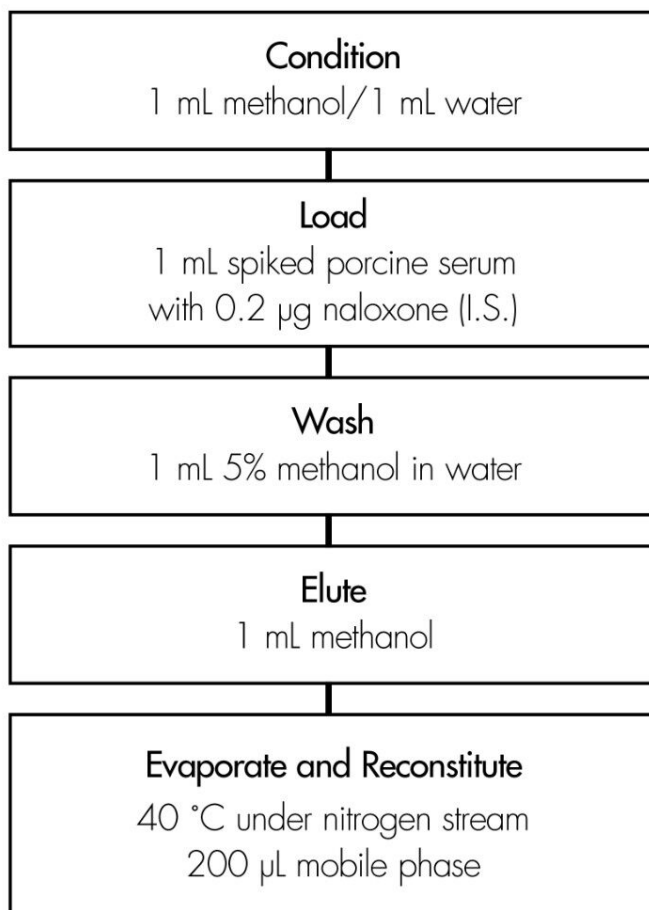
## Experimental

### HPLC Conditions

Column:	Symmetry Shield RP <sub>8</sub> , 3.0 x 150 mm, 5 µm
Guard column:	Sentry guard column, 3.9 x 20 mm, 5 µm
Part numbers:	Column - WAT094243, Guard - WAT200675
Mobile phase:	20 mM ammonium acetate, pH 5/acetonitrile, 90:10
Flow rate:	0.6 mL/min
Injection volume:	20 µL of reconstituted porcine serum extract
Temperature:	25° C
Detection:	UV @ 215 nm

# Oasis® HLB Extraction Method

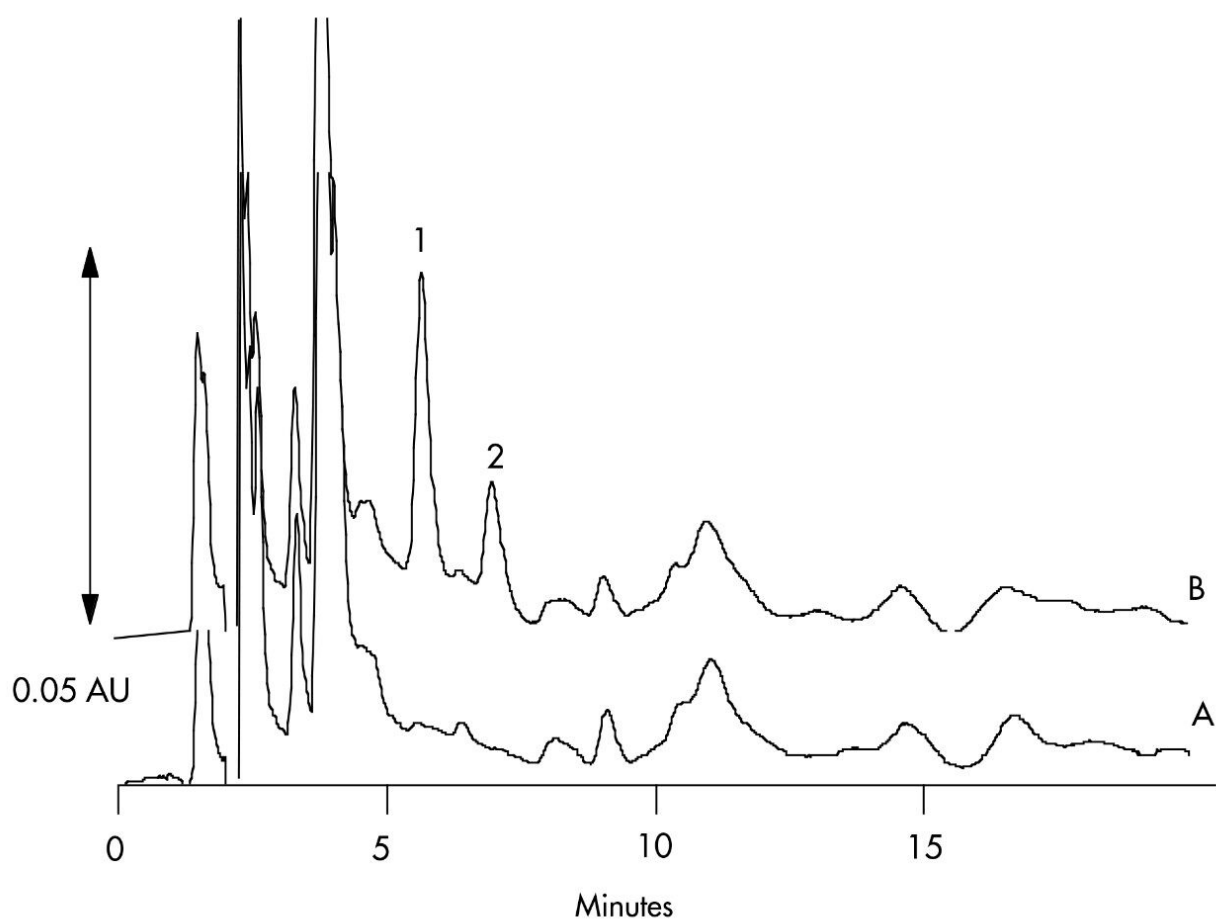
Oasis® HLB 1 cc/30 mg Extraction Cartridge  
Part Number WAT094225



Compound	Concentration µg/mL	% Recovery	%RSD (n=6)
Naltrexone	0.200	98%	3.2%
	1.00	100%	3.5%

---

## Results and Discussion



---

## Featured Products

Alliance HPLC <<https://www.waters.com/514248>>

WA31763.109, June 2003

