

Naltrexone

Waters Corporation



This is an Application Brief and does not contain a detailed Experimental section.

Abstract

This application brief demonstrates analysis of naltrexone using Symmetry Shield RP₈ Column.

Introduction

The compounds used in this study was -

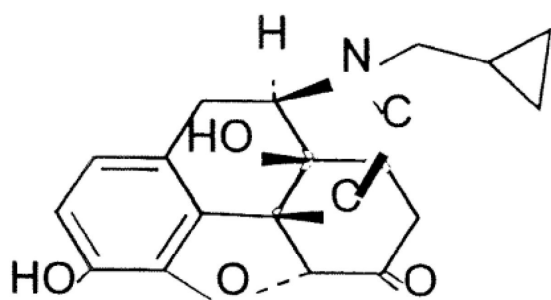
1. Naloxone (I.S.)

2. Naltrexone

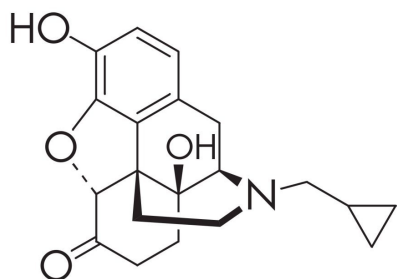
USP Tailing Factors

1. 1.05

2. 1.04



1. Naloxone (I.S.)



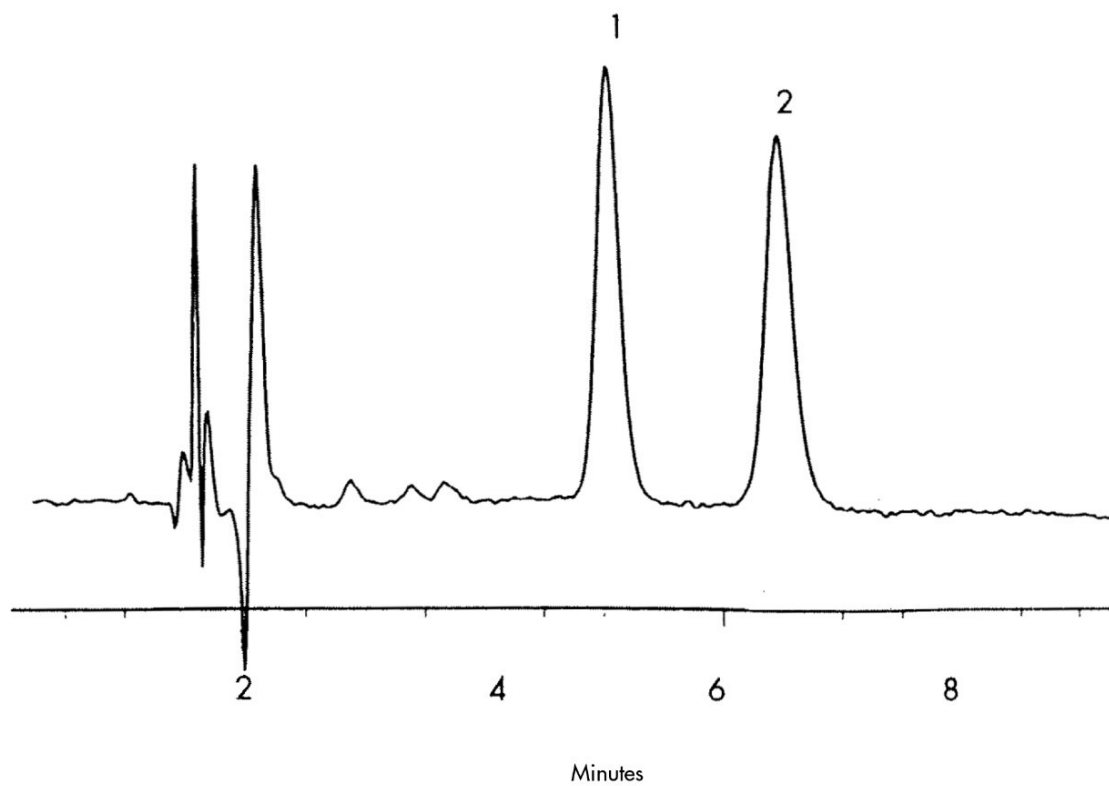
2. Naltrexone

Experimental

HPLC Method

Column:	Symmetry Shield RP ₈ , 3.9 x 150 mm, 5 µm
Part number:	WAT200655
Mobile phase:	100 mM Ammonium acetate, pH 5.0/acetonitrile 88:12
Flow rate:	1.0 mL/min
Injection volume:	35 µL (500 µL eluate)
Detection:	UV @ 281 nm

Results and Discussion



Featured Products

WA31763.106, June 2003



© 2021 Waters Corporation. All Rights Reserved.