

Nota applicativa

## Naltrexone

---

Waters Corporation



This is an Application Brief and does not contain a detailed Experimental section.

---

### Abstract

This application brief demonstrates analysis of naltrexone using Symmetry Shield RP<sub>8</sub> Column.

---

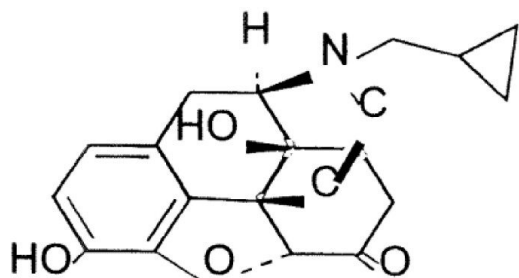
## Introduction

The compounds used in this study was -

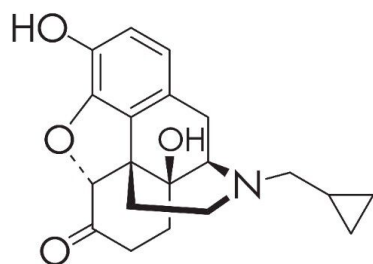
1. Naloxone (I.S.)
2. Naltrexone

USP Tailing Factors

1. 1.05
2. 1.04



**1. Naloxone (I.S.)**



**2. Naltrexone**

---

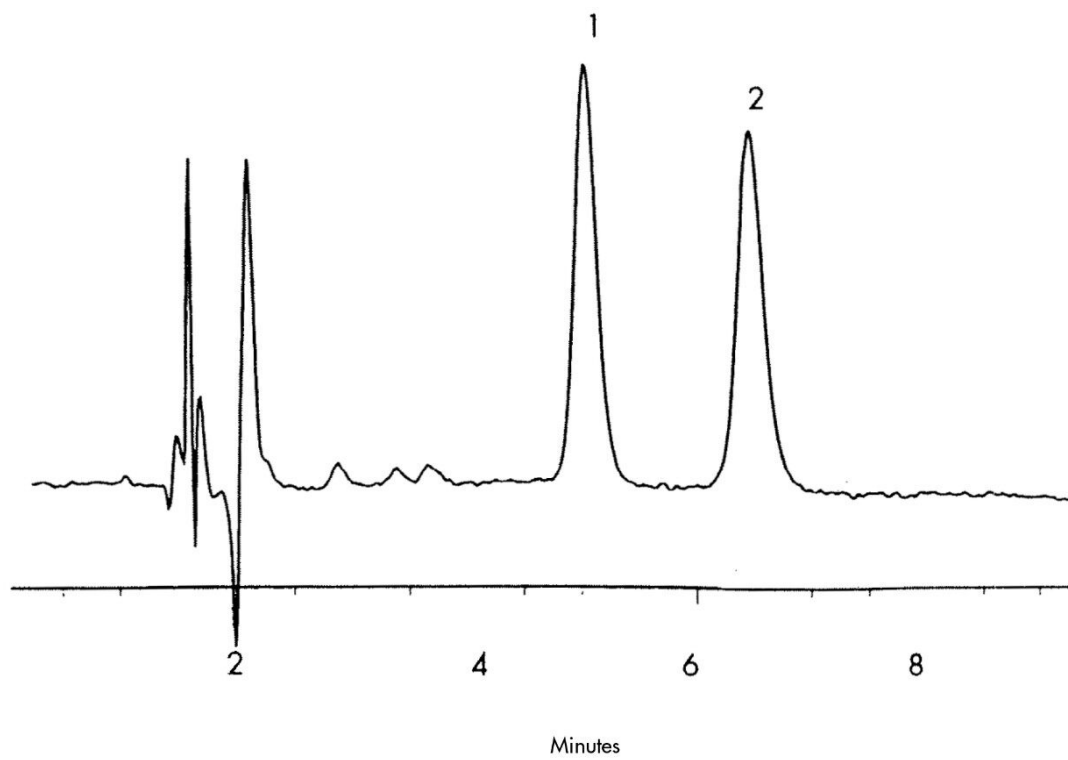
## Experimental

### HPLC Method

Column:	Symmetry Shield RP <sub>8</sub> , 3.9 x 150 mm, 5 μm
Part number:	WAT200655
Mobile phase:	100 mM Ammonium acetate, pH 5.0/acetonitrile 88:12
Flow rate:	1.0 mL/min
Injection volume:	35 μL (500 μL eluate)
Detection:	UV @ 281 nm

---

## Results and Discussion



---

## Featured Products

WA31763.106, June 2003