

Note d'application

Nadolol

Waters Corporation



This is an Application Brief and does not contain a detailed Experimental section.

Abstract

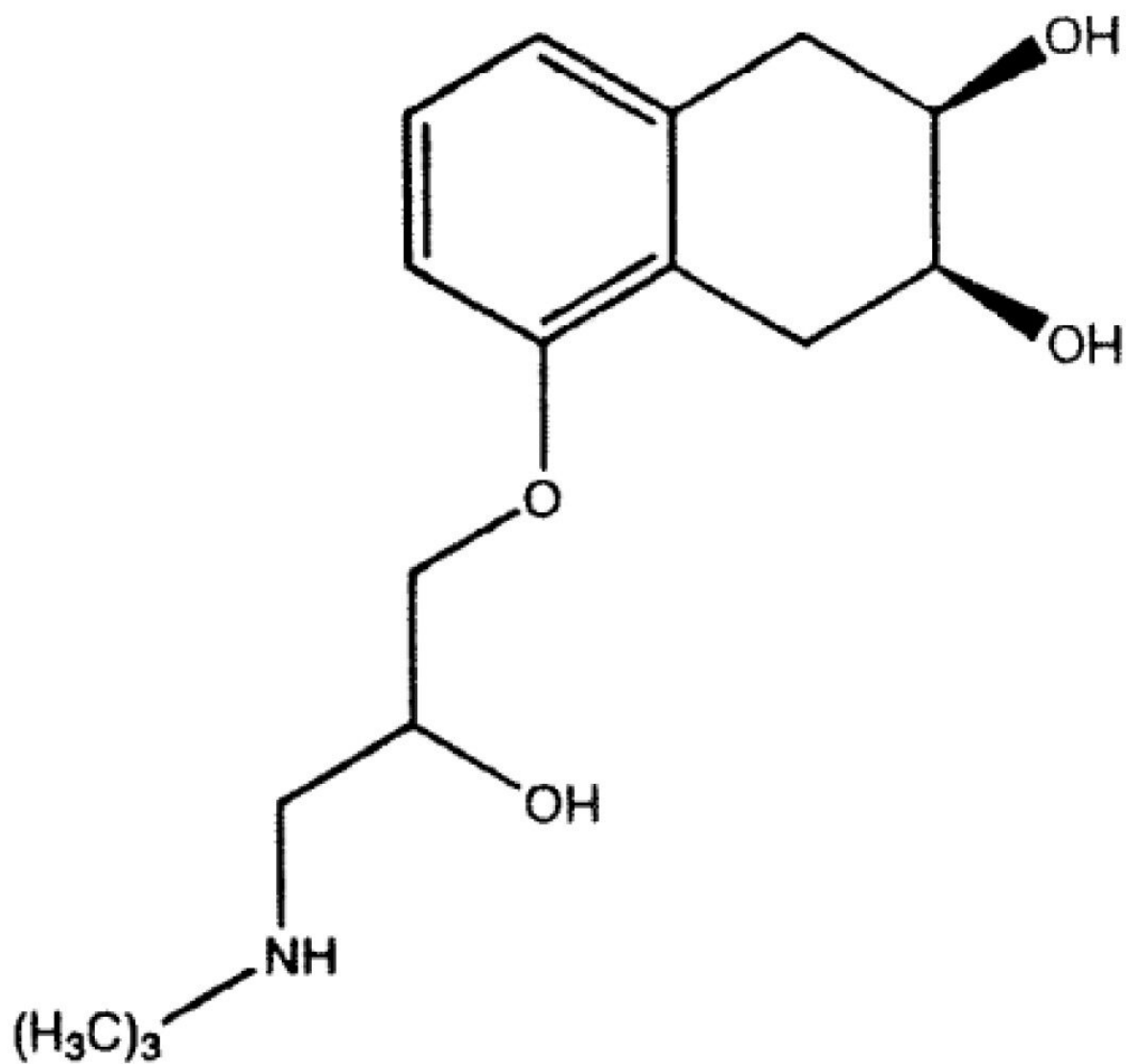
This application brief demonstrates analysis of nadolol.

Introduction

The compound analyzed in this study was nadolol using Symmetry Shield RP₁₈ Column.

USP Tailing Factors

1. 1.19



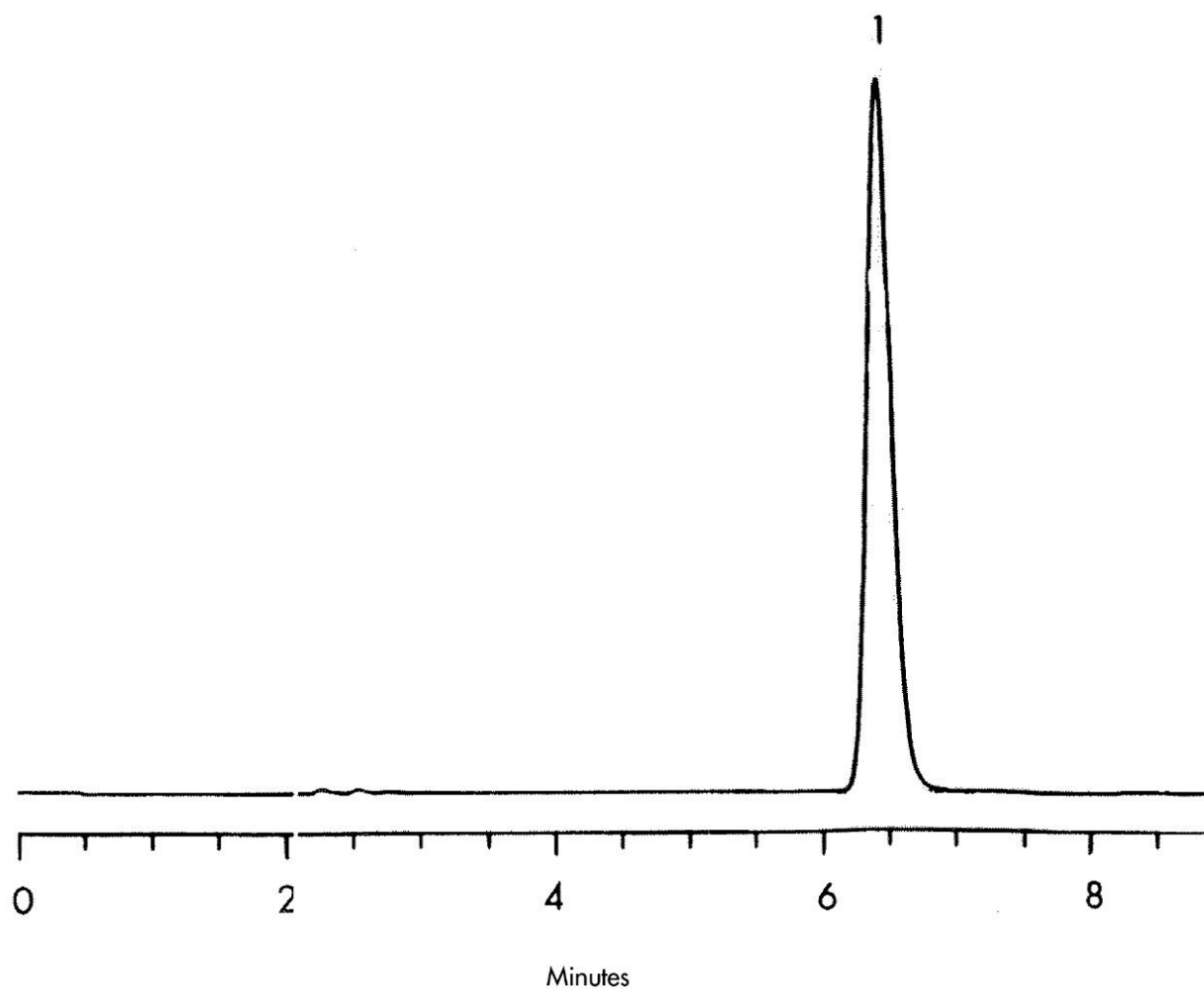
1. Nadolol

Experimental

HPLC Method

Column:	Symmetry Shield RP ₁₈ , 4.6 x 250 mm, 5 µm
Part number:	186000112
Mobile phase:	Methanol/water 35:65, 2.93 g of sodium chloride, 1.0 mL of 0.1 N hydrochloric acid
Flow rate:	1.0 mL/min
Injection volume:	20 µL
Detection:	UV @ 220 nm

Results and Discussion



Featured Products

WA31763.105, June 2003

