

## Nadolol

---

Waters Corporation



This is an Application Brief and does not contain a detailed Experimental section.

---

## Abstract

This application brief demonstrates analysis of nadolol.

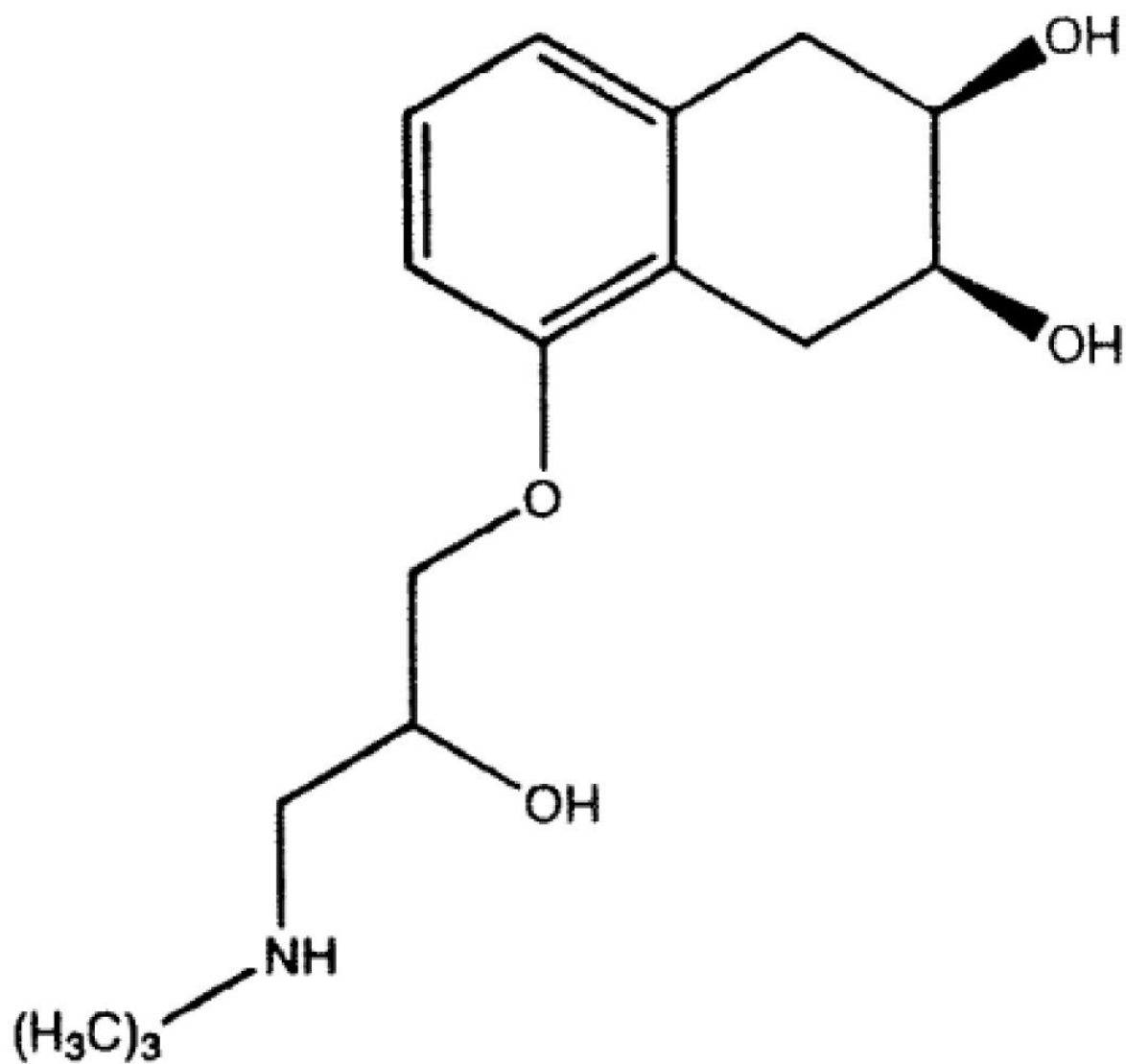
---

## Introduction

The compound analyzed in this study was nadolol using Symmetry Shield RP<sub>18</sub> Column.

USP Tailing Factors

1. 1.19



# 1. Nadolol

---

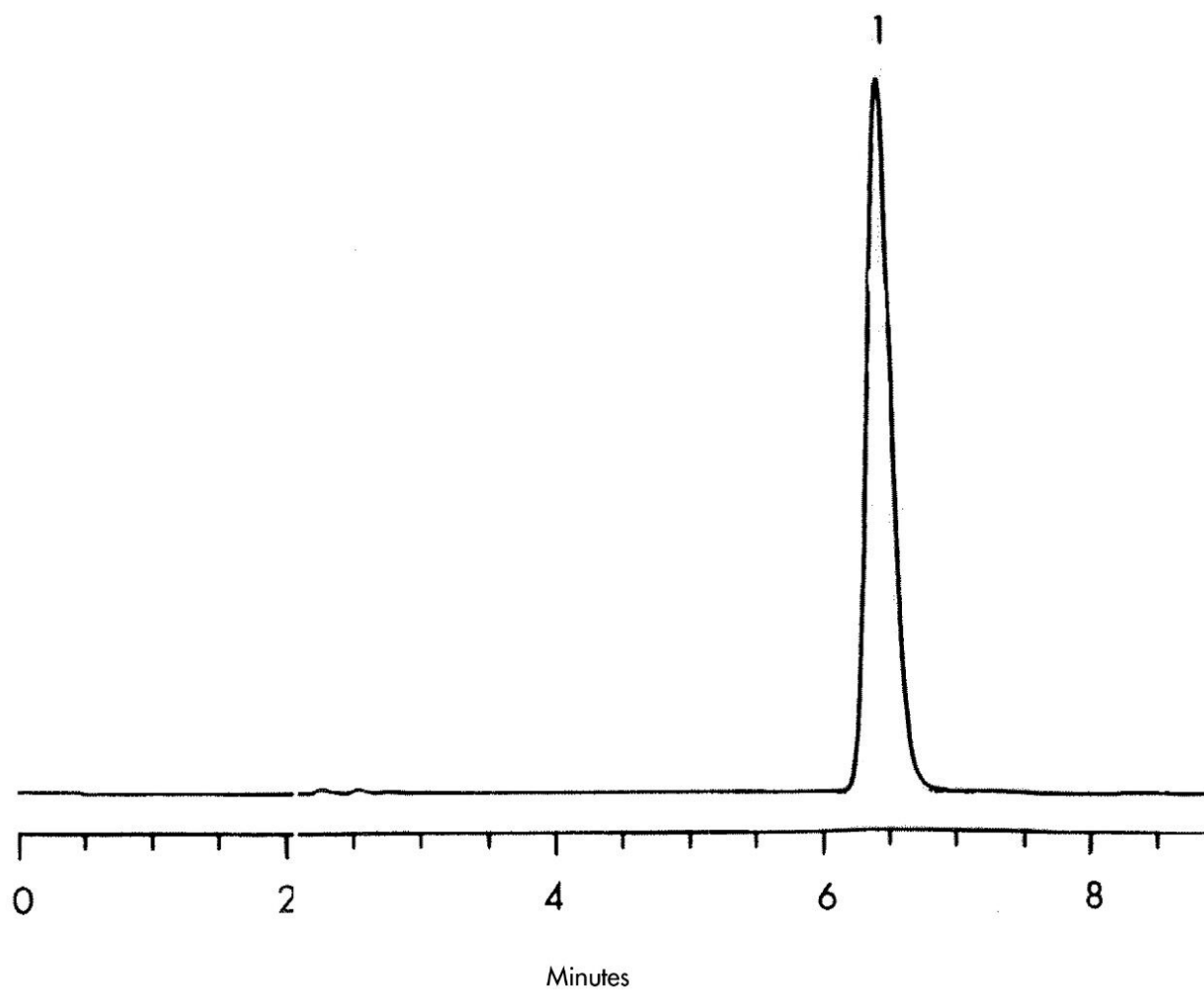
Experimental

## HPLC Method

Column:	Symmetry Shield RP <sub>18</sub> , 4.6 x 250 mm, 5 µm
Part number:	186000112
Mobile phase:	Methanol/water 35:65, 2.93 g of sodium chloride, 1.0 mL of 0.1 N hydrochloric acid
Flow rate:	1.0 mL/min
Injection volume:	20 µL
Detection:	UV @ 220 nm

---

## Results and Discussion



---

## Featured Products

WA31763.105, June 2003

