

## Acephate in Drinking Water

---

Waters Corporation



This is an Application Brief and does not contain a detailed Experimental section.

---

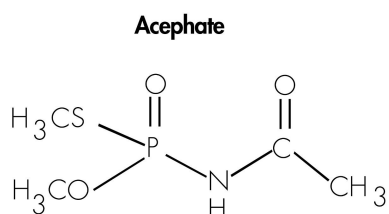
### Abstract

This application brief highlights the analysis of acephate in drinking water using SymmetryShield columns.

---

## Introduction

Acephate in drinking water has been analyzed in this application brief.



---

## Experimental

### HPLC Method

Column:	SymmetryShield RP <sub>8</sub> , 3.9 x 150 mm, 5 µm (p/n: WAT200655)
Mobile phase:	H <sub>2</sub> O/ACN 96:4
Flow rate:	1.0 mL/min
Injection volume:	75 µL
Detection:	UV @ 200 nm (0.02 AUFS)

# Oasis® HLB Extraction Method

Conditions for Oasis® HLB Cartridge, 3 cc, 60 mg  
Part Number WAT094226

## Prepare Sample:

To 20 mL sample add 5 g NaCl  
Adjust to pH 3 with  $\text{H}_3\text{PO}_4$

## Condition:

3 mL methylene chloride

**Rinse:** 3 mL methanol

Rinse: 3 mL  $\text{H}_2\text{O}$

## Load:

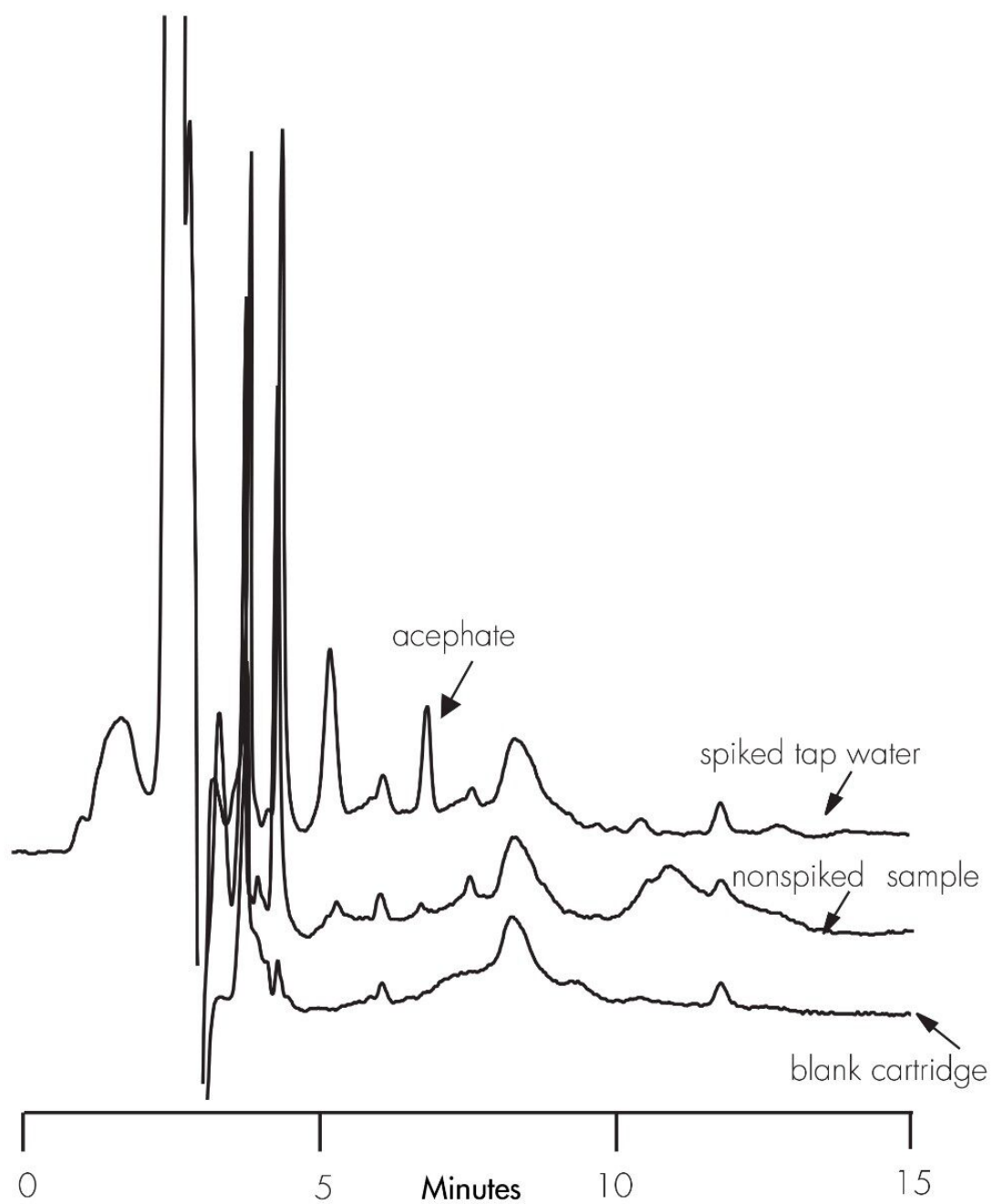
20 mL sample @ 4 mL/min

## Elute:

2 mL methylene chloride

## Evaporate and Reconstitute:

with 250  $\mu\text{L}$  mobile phase



---

## Featured Products

WA31763.09, June 2003

