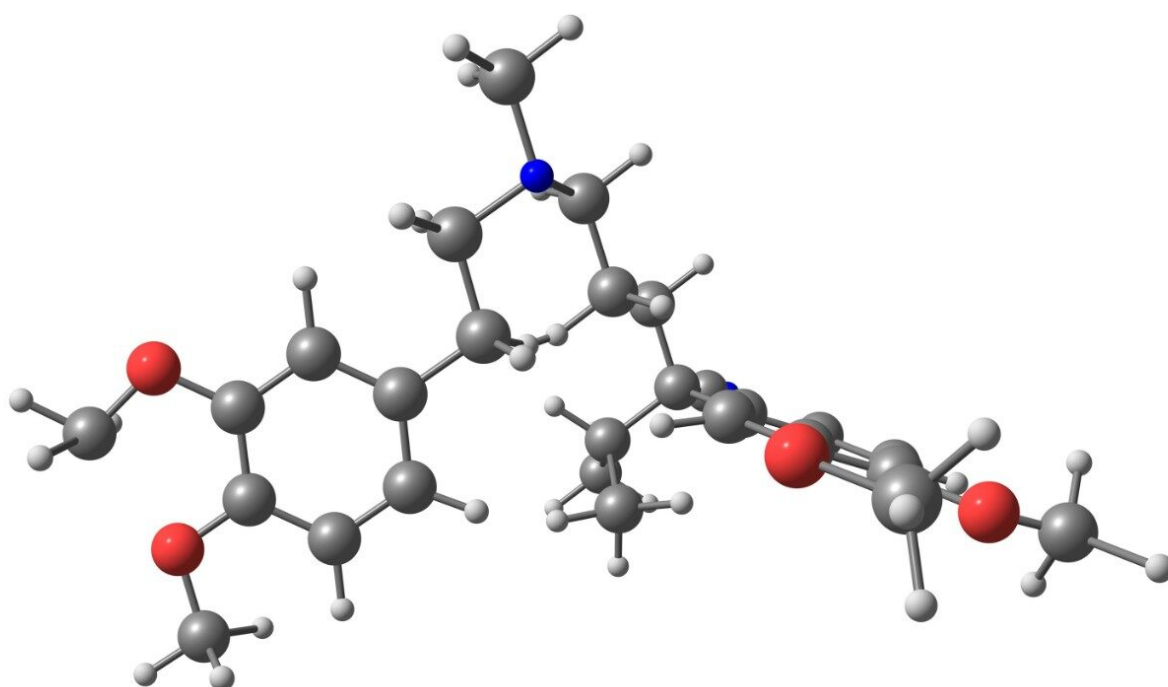


## Verapamil - pH 2.5, LC-MS

---

Waters Corporation



This is an Application Brief and does not contain a detailed Experimental section.

---

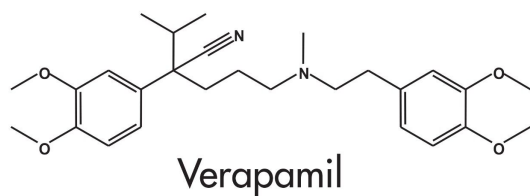
### Abstract

This application brief highlights the analysis of verapamil by LC-MS using XTerra MS C<sub>18</sub> columns.

---

## Introduction

Verapamil has been analyzed in this application brief.



---

## Experimental

### HPLC Conditions

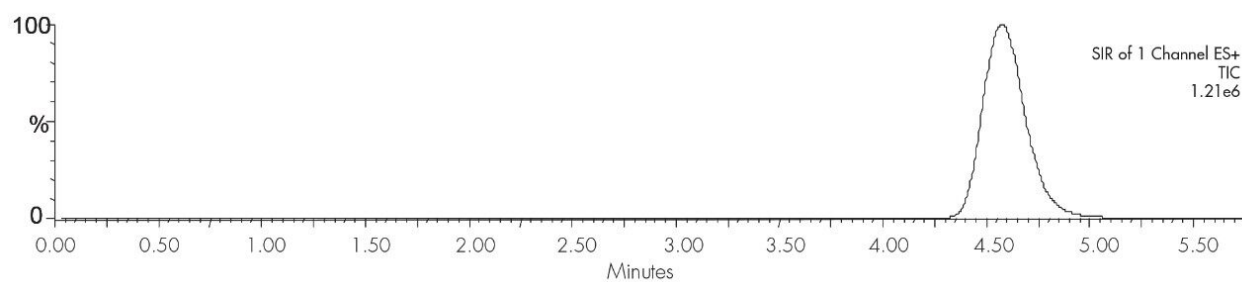
Column:	XTerra MS C <sub>18</sub> 2.1 x 30 mm, 3.5 μm (p/n: 186000398)
Mobile phase A:	0.1% HCOOH in H <sub>2</sub> O, pH 2.5
Mobile phase B:	0.1% HCOOH in ACN, pH 2.5
Flow rate:	0.2 mL/min to MS
Isocratic mobile phase composition:	77% A; 23% B
Injection volume:	20 μL of 100 pg/μL
Temperature:	Ambient
Detection:	MS ESI+, SIR 455.45
Instrument:	Alliance 2795 HT, Micromass ZQ

## MS Conditions

MS system:	Micromass ZQ
Source:	ESI+
Capillary (KV):	3.0
Cone (V):	35
Extractor:	3.0
RF Lens:	0.5
Source temp.:	150
Desolvation temp.:	350
Cone gas flow (L/Hr):	60
Desolvation gas flow (L/Hr):	500
LM resolution:	15
HM resolution:	15
Ion energy:	1.0
Multiplier (V):	650

---

## Results and Discussion



---

## Featured Products

Alliance HPLC <<https://www.waters.com/514248>>

WA20738.115, June 2002